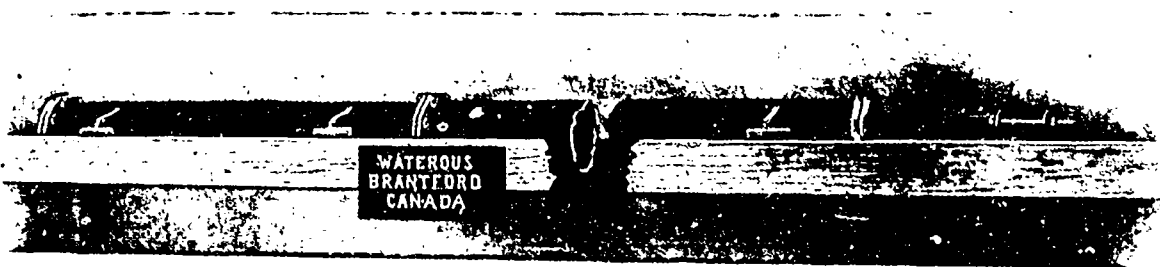


DON'T WASTE TIME

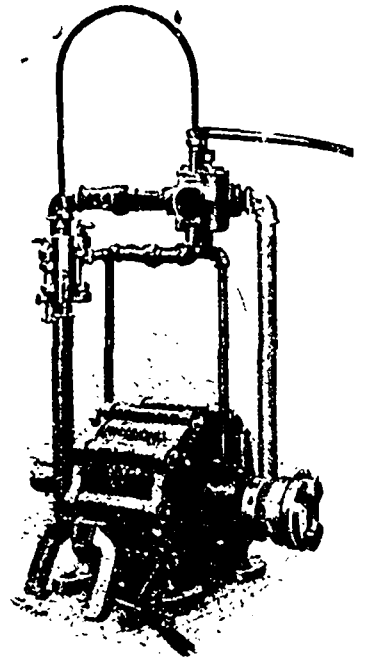
This is most essential in the operation of your mill and a reliable FEED will help towards this end fully more than any other mechanism about it. . .



DIRECT ACTING STEAM FEED

Standard sizes 7", 7½", 8", 9", 10", 11" and 12".
Cylinders in six foot lengths.

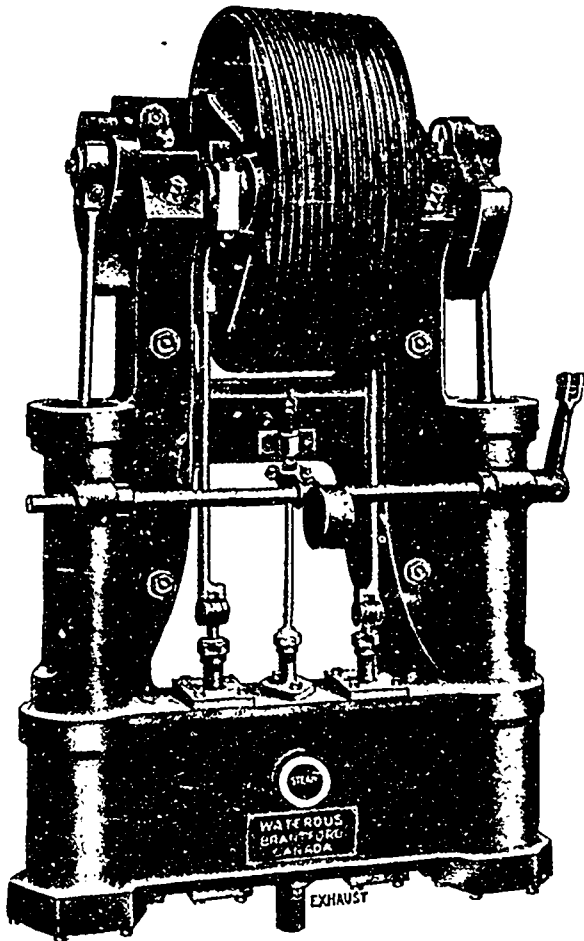
These FEEDS are provided with our latest PATENT VALVES—the best in valve construction, works easily and certainly.



THE SOULE ROTARY STEAM FEED

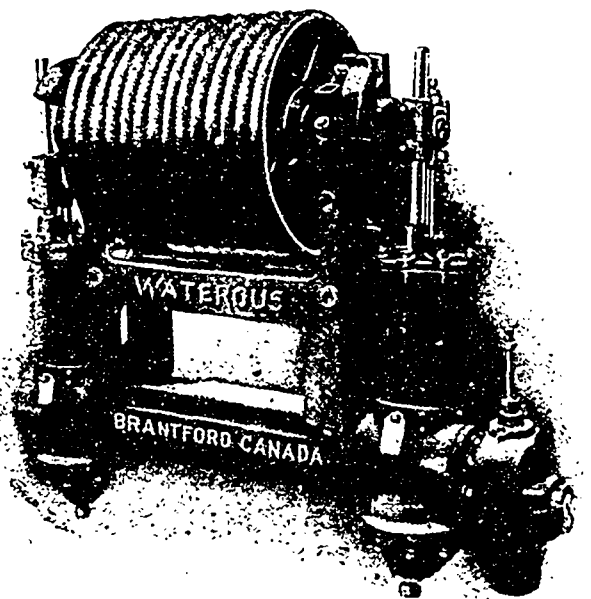
A splendid Feed for small mills—small and compact, therefore takes up little room and readily installed, a means of increasing the capacity of your mill, and is in the following sizes:

- No. 1 Feed has 1½" pipe, suitable for 10,000 capacity.
- No. 2 Feed has 1¾" pipe, suitable for 20,000 capacity.
- No. 3 Feed has 2" pipe, suitable for 30,000 capacity.
- No. 4 Feed has 2½" pipe, suitable for 40,000 capacity.



THE BECK PATENT DUPLEX ENGINE FEED

is not surpassed by any other similar Feed that is made, easy to handle, easy on steam, no leaky joints, no trunnions to wear. We furnish these FEEDS complete with two sheaves, all fittings and castings for attaching ropes to carriages. The Beck Feed stands for Capacity, Reliability and Economy.



THE GUNNINGHAM OSCILLATING TWIN ENGINE FEED

is so well known that it needs no special mention.

Write Us, for Prices on These Feeds

And We Will Gladly Furnish Prices and Estimates on Machines for Saw Mills, Pulp Mills, Steam Plants, Boilers, Engines, Etc.

WATEROUS, Brantford, Canada