

# THE CANADA LUMBERMAN

TORONTO, CANADA, MARCH, 1900

TERMS, \$1.00 PER YEAR.  
Single Copies, 10 CENTS.

## A GIANT PLANER.

The accompanying illustration represents probably the largest wood planer ever put in operation in Canada. This machine was manufactured by the Egan-Fay Company, of Cincinnati, and was purchased by the Canadian Pacific Railway Company for the purpose of preparing the material for the Howe truss bridges on the Crow's Nest Pass Railway. By means of this machine, the company were enabled to effect a saving of \$1 per 1,000 feet in the material for these bridges. The saving in cost of operation effected was sufficient to pay for the cost of the machine in the period of two months. The machine was capable of planing on four sides at one operation a piece of lumber 26 x 48, and of turning out 100,000 feet of such material per day. The largest sized timber which the Canadian Pacific Railway company put through the machine was 7 x 28 and 72 feet long. These timbers were used for the upper and lower chords of the bridges. The machine was first put in operation at McLeod and was afterwards removed to the Coal Creek saw mills.

## NEW BRUNSWICK NEWS.

Logging operations are being vigorously prosecuted throughout the province of New Brunswick this season, but the extremely mild weather and the absence of a sufficient quantity of snow considerably limit the quantity of lumber anticipated earlier in the season, and for which provision was made by the different operators.

Throughout the counties of St. John, King's and Albert, a large number of portable saw mills secured cuts, and in some cases a considerable distance from shipping points, relying on a sufficient quantity of snow to facilitate good hauling. This being, in some cases a large portion of the estimated profits on the operations will result. In the counties of Westmoreland, Queens and Northumberland, it has been an ideal lumbering winter, just enough snow to make good roads in the woods and to get scattered timber with the least possible cost. Very little winter logging is done in the two last named counties—the cut usually has to be driven to the mills by water for spring logging. Gloucester and Restigouche counties have about the usual depth of snow, and will make about the usual showing in quantity of logs for the season's sawing, although the outbreak of smallpox in Restigouche will naturally somewhat restrict the output. On the St. John River the conditions are normal and from present indications the output will be up to the average.

One large firm operating in Charlotte county that planned to take fifty million feet of logs out, have been completely handicapped by the extremely open winter, and the probability is that their cut will fall considerably below their earlier expectations. This is regrettable, as they have incurred a large expense in refitting their saw mills in anticipation of a large stock of logs. From a general survey of the lumber situation in New Brunswick, it is safe notwithstanding the strong market conditions prevailing abroad, to predict that only an average output will be secured.

Considerable attention is being paid to hemlock this season, owing to the advance in price for this class of lumber in the United States markets. Owing to the demand incident to a general revival of business in the country, together with building operations in progress and participation in Cape Breton in connection with the development of the iron industry, this class of timber is being stocked up with, and at points on the gulf shore short water communication with Prince Edward Island and Cape Breton, a considerable quantity of hemlock will be manufactured.

Portable mills operating in St. John county include the following: The O'Neill Lumber Co., St. Martins, have three along the line of the Central Railway, from which they expect to ship about three million feet; they also have a large steam and water power mill in St. Martins, and are stocking it with two million feet. G. R. McDonough, St. Martins, expects to saw during the winter and summer two million feet. Bentley & Fulmer, St. Martins, have their mill at Tynemouth creek. On December 15th they had one million feet of deal sawn, and expect to have another million feet sawn and hauled to shipping point before the snow is off the ground. Edgar Smith, Gardner's Creek, will saw about one million feet; he also runs a lath machine in connection with his mill. Joseph Campbell, Kirkpatrick's P. O., expects to saw about one million feet during the winter and spring. Flewelling & Townes, of Upham, are running a mill at McFees, and will saw in the neighborhood of a million feet. S. H. White & Co., of Sussex, have a number of portable mills sawing for them and expect to ship from six to eight million feet during the winter and early spring. This firm's portable mills are all in King's county. They also operate extensively under the name of the Alma Lumber Co., at Alma, and Pollett River Lumber Co., at Pollett River, in Albert county, having large and modern

being  $\frac{1}{2}$  in. with 1-16 in. on each side, and glued across the grain of the centre, thus making a very strong shook board, and at the same time it is light. Hardwood—beech, birch and maple—is the wood used. The output goes to England and France. The possibilities for this class of business here are excellent, as a splendid quality, and an almost inexhaustible quantity, of suitable timber abounds. Mr. Prescott also has a large steam saw mill adjacent and is stocking about two and a half million feet of spruce for spring sawing.

McLellan & Turner, Riverside, are getting out about three quarters of a million feet for their stationary saw mill. J. W. Carnwath, Riverside, runs a portable saw mill and expects to saw one and a half million feet. At Hopewell Hill Charles Peck and James Wright each have a portable mill and will each cut in the neighborhood of a million feet. B. Tingley, Albert county, runs a portable mill during the winter and spring and will saw about one million feet. J. W. Floyd, Hopewell Cape, has put in a portable mill and expects to cut one million feet. W. H. Duffy, Hillsboro, with a portable mill, will cut one and a half million feet. LeB. D. Lockhart, Humphrey's Mills, is operating to the extent of about one and a half million. Mr. Lockhart saws largely on bill stuffs and orders, also hardwood flooring and sheathing, of which he makes a splendid article and has a large demand. Lockhart & Lawther, Cocaigne, Kent Co., have a large steam mill. Their output will be about two million feet, a considerable portion of which is hemlock of first-class quality. J. D. Irving, Buctouche, Kent county, has a large steam mill in which he will saw two and one half million this season. He is sawing with a portable mill on hardwoods during the winter, near the I. C. R., shipping from Coal Branch station. A large portion of his stock will go to Newcastle and Chatham for export. J. & T. Jardine, Kingston, will get about four million feet for their band mill. They also buy the cut of several small mills in the vicinity for export.

Edward Walker, Bass River, Kent county, is taking out about two and a half million feet. He has a steam and water power gang mill, with shingle and lath mills, also carding and grist mills in connection. Mr. Walker finds a good market for his boards, scantling, laths, etc., in Prince

Edward Island and Cape Breton. Besides lumbering and milling Mr. Walker carries on farming operations extensively and raises an immense quantity of hay, the land in this vicinity being particularly adapted for its growth.

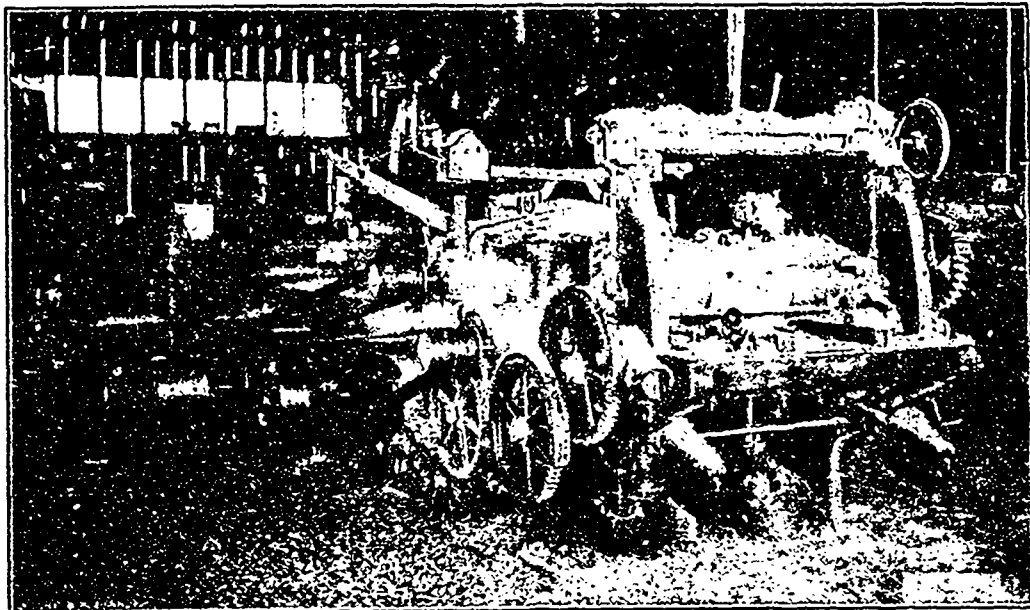
At Newcastle, Nelson, Douglastown, Chatham, and Black Brook, the prospects are good for an average cut. The quantity of snow is just right for logging, and if present conditions hold until the usual time for breaking up, it will be an ideal spring for stream driving. Vaughan & Damery, Jacquet River, have purchased the Doyle property and are getting out three million feet of logs. John Culligan, Belledune, is taking out four million feet, about half of which is cedar. He is sawing shingles and white birch spool stock now.

Adams, Burns & Co., Sumner county, and O.F. Stacey & Co. are the principal operators at Bathurst, each of whom will get their usual cut. The latter saws shingles only. Nat. McNair, Nash's Creek, saws about two million of spruce, besides shingles. Gray & Lawrence Bros. Co., shingle manufacturers, River Charles, will operate to their full capacity.

At Campbellton preparations are being made for the usual output of lumber and shingles, and all the mills are being overhauled in anticipation of a good season's work. There has not been as much winter sawing of shingles as in former years in this section of the country, and in consequence the stocks on hand in the spring will be comparatively light. From present indications, taking everything into consideration, this promises to be the lumbermen's banner year.

W. J. P.

Beef tallow and flake graphite mixed form a very good lubricant for a hot box on an engine or a line of shafting.



A GIANT PLANER—USED IN CONSTRUCTION OF CROW'S NEST PASS RAILWAY.

water power mills at both the above places, capacity of both about ten million feet per annum. C. M. Bostwick, Big Salmon River, will saw about five million feet in his water power saw mill. Joshua Prescott, of Sussex, will saw about two million at Goose creek—water power mill. C. T. White, Sussex, has mills at Point Wolfe, N. B., whose operation will be about five million feet. Mr. White also lumbers extensively at Apple River, N. S. Since his mill was burned two years ago he has had a couple of portable mills sawing there for him, cutting from three to five million feet per year. E. P. Eaman, Elgin, N.B., is putting out  $\frac{1}{2}$  of a million feet. Humphrey & Trites, Petitcodiac, are running a lath mill in the woods this winter. They are getting out three million feet of logs to saw in their large mill at Petitcodiac. A. L. Wright & Co., Salisbury, are operating to the extent of three million feet. At present they are sawing lath for early spring shipment. John Fowles is sawing about a million and a half at his portable mill at Havelock. Harding Graves, Harvey Corner, Albert county, is taking out about three million feet to be sawn by portable mills in the spring. C. & J. Prescott, Albert county, are operating to the extent of three million feet. Their mill is a gang driven by water power. McLellan Bros., Albert county, have just put in a new portable mill, power furnished by Leonard & Sons, and sawing machinery by the Oxford Foundry Co., Oxford, N. S. They will get about one million feet this season. Freeman Goodwin has a portable mill at New Ireland, and expects to ship one million feet from Albert.

The West River Manufacturing Co., West River, Albert county, of which George D. Prescott is manager, have gone into the manufacture of veneer box shooks. The stock log is revolved in a lathe against an adjustable knife, and the veneering made any thickness desired. The shooks are made of three thicknesses, the centre