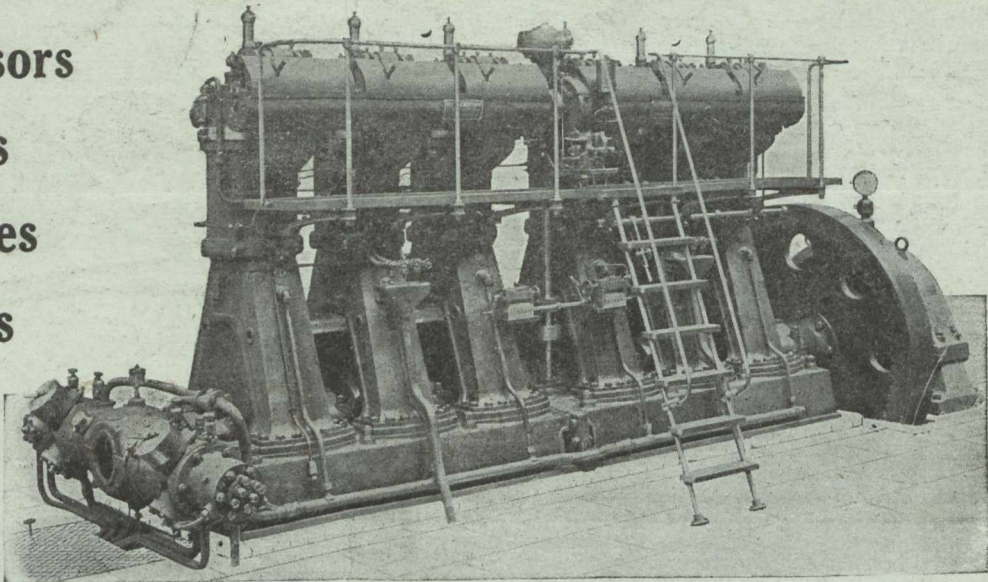


BELLISS & MORCOM

Air Compressors
Diesel Engines
Steam Turbines
Steam Engines
Condensers



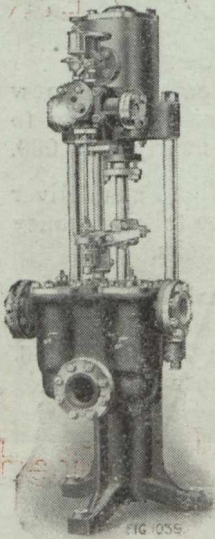
BELLISS & MORCOM DIESEL CRUDE OIL ENGINE.

LAURIE & LAMB

211 Board of Trade Building

MONTREAL

The "Tipton" High Pressure Vertical Direct-Acting Slow Speed Boiler Feed Pump



The pumps are designed for feeding with and against pressure up to 200 lbs. per square inch.

Specification:—The Pump End is of close grained cast iron fitted with a gun metal liner to the working barrel. The pump bucket is of gun metal fitted with ebonite rings which are made to expand by the pressure of water in the pump cylinder. The pump rod is of manganese bronze and is connected to the steel piston rod by means of an improved design of crosshead, which is made adjustable for wear on the cross-head pin.

Pump Valves:—In the smaller pumps each valve is fitted with a gun metal valve and seat but in the larger sizes gun metal group valves are fitted. The Steam Cylinder is neatly lagged with blue planished steel. The steam valve gear is of the positive type which renders the pump certain in action at very low speeds, and ensures a full stroke being made at each alternation. The number of moving parts in the steam chest valve gear has been reduced to the absolute minimum, thus obviating as far as possible unnecessary wear and tear and cost of frequent renewals.

Prices and full particulars will be sent on application

FRASER & CHALMERS OF CANADA, Limited

GUARANTEE BUILDING

::

MONTREAL, QUE.