

JUCE

will plant any small seed from alfalfa to bearded oats, peas and beans without crushing the seed or permitting it to choke up in the seed box.

The general construction of this machine is exactly the same as the ordinary John Deere Van Brunt Grain Drill, it having the exclusive features of Van Brunt Drills, including the Van Brunt Adjustable Gate Force Feed.

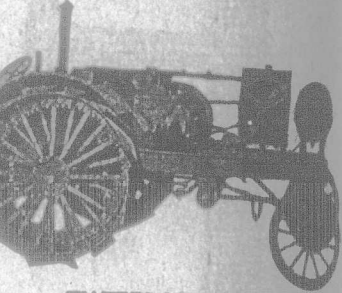
The Agitator Attachment keeps the contents of the fertilizer box in constant motion and a continuous flow into each and every feed tube is always certain.

SEE YOUR NEAREST JOHN DEERE DEALER, OR WRITE DIRECT TO

LIMITED

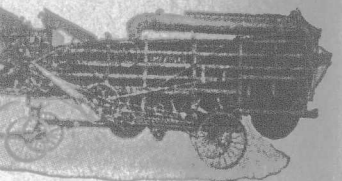
ONTARIO

tractors and Threshers



WATERLOO BOY

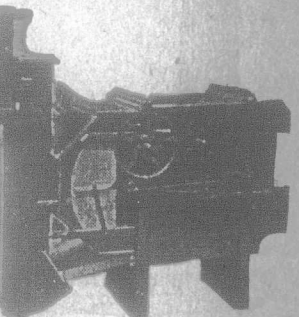
Simplest, most Accessible, most Powerful Tractor on the market. Suitable for hauling & Plows, Threshing, and General Farm Work.



Individual Farmers' Threshers, suitable for use by small Tractors and Gasoline Engines for own threshing. Keep your farm clear of expense. For free catalogue, prices, and any information write to:

THE ROBT. BELL ENGINE & TRACTOR COMPANY, LIMITED  
Seaforth, Ont.

also Steam Tractors, and large size.



The Kline Mill

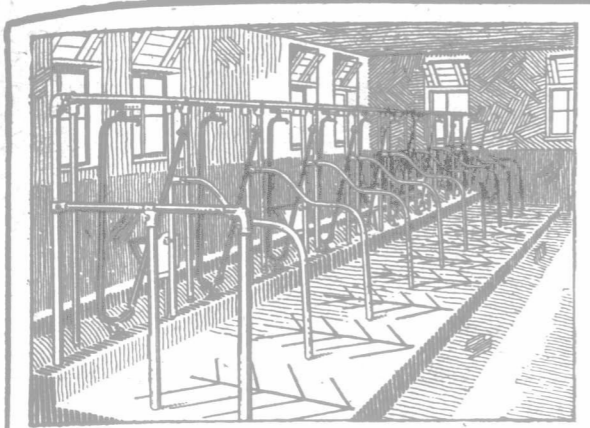
After inventor died, when new one was put on the market, it was sold at twice the price of the old one. The Public thought they would not get the Kline Mills, in vicinity of Beeton and ... It is the only mill that weighs and ... n. In separating wild oats has no ... Capacity One Hundred bushels as ... power attachment. Easiest mill to ... Write for particulars.

Beeton, Ontario.

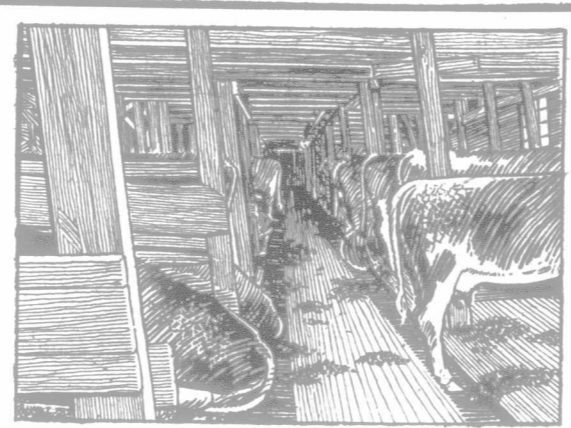
FORGETTING!

... and Memory Course gives a ... train observation, strengthens ... self-confidence, develops ... builds up an all-round mental ... Requires only few minutes a ... for ...

INSTITUTE Dept. E Toronto, Can.



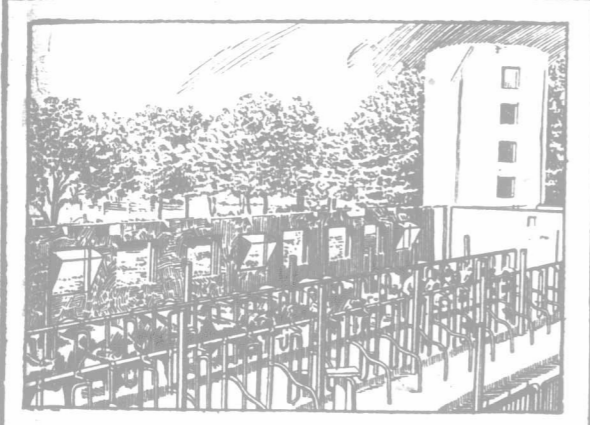
BT Sanitary Steel Stalls permit the sunlight to flood the stable freely. Sunlight kills disease germs. The steel stalls harbour no germs or vermin. They do not soak up liquid manure. Note the fine appearance of the stable.



Here is a poorly lighted, unsanitary barn of the old type where disease germs thrive. Tuberculosis germs thrive in dark, dirty barns. Liquid manure soaks into the old wood stalls and is one of the chief causes of tuberculosis.



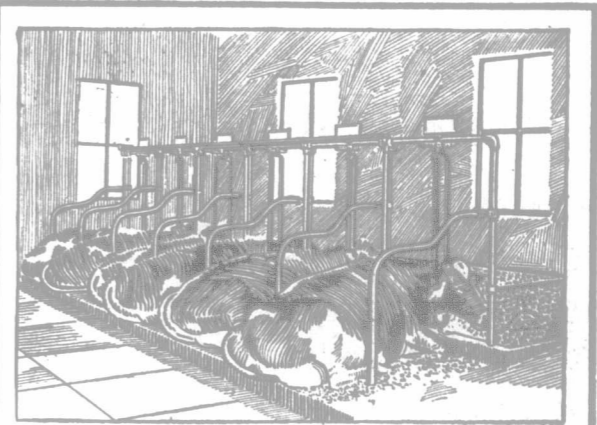
These cows are tied in the steel stalls. Note that they are lined up evenly with the gutter so that no manure falls on the cattle stand and none falls on the walks. This keeps the cows clean and saves much work in stable cleaning.



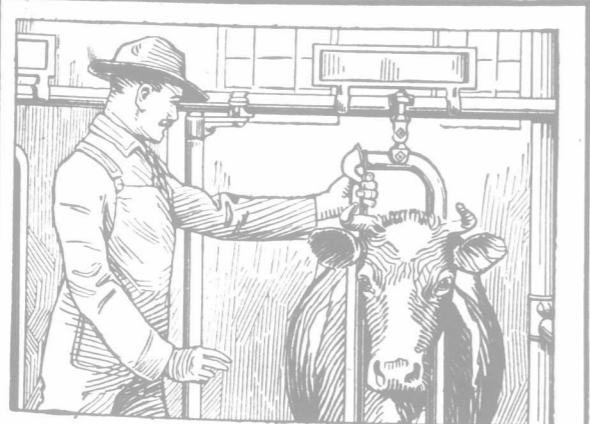
Here is the barn of Col. Robertson, Williamstown, Ont. It caught fire and burned to the ground, yet the steel stalls were uninjured, and after the fire the cows were tied up in their places and a photo taken. A few cents made the stalls as good as new. BT Stalls are fireproof.



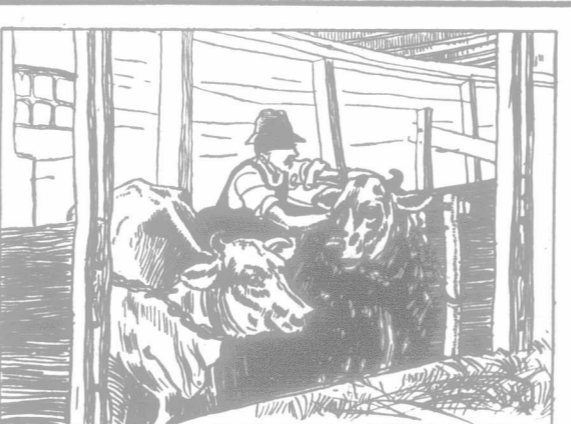
Here is what happens to the old style barn when it catches fire. The old wood stalls burn up like matchwood and everything is a loss. Not only that, but it is also difficult to get the cows out because they tug and jerk at their chains, making it impossible to undo the chains.



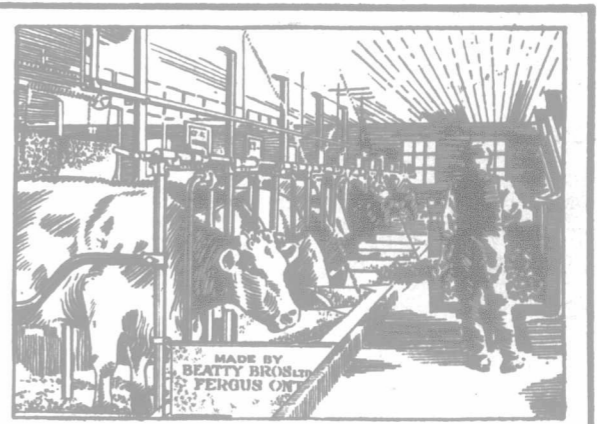
Cows when tied in steel stalls have absolute comfort. They can lie down on either side, turn their heads freely and card themselves back to their flanks. Cow comfort increases milk production. Cows will give 10% more milk when tied in these stalls.



The BT Steel Stanchion is easy to open. This saves work and annoyance every day. You can open this stanchion with one hand. A whole row can be untied in less time than it takes to undo a single chain tie. This is very important in case of fire.



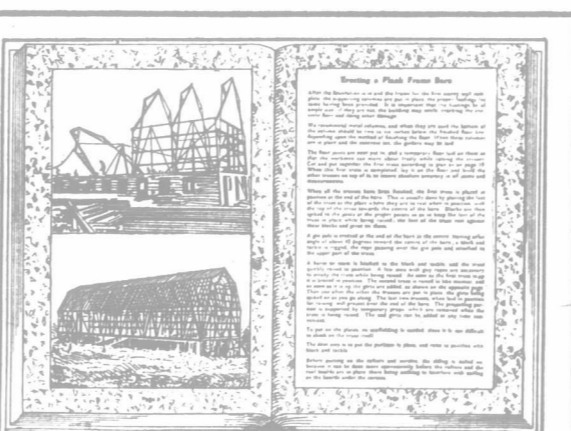
The old-fashioned chain tie is hard to open. This wastes time every day. It is a serious matter in case of fire, for the cow becomes terrified, tugs back and it is impossible to release her. In addition a chain tie is very uncomfortable for the cow.



Every cow has her own manger in this stable and cannot steal from her neighbor. The fast eating cow cannot gormandize at the expense of the slow eater. With the truck the cows can be fed in a very few minutes. The time work saved by up-to-date stable equipment pays back much of the cost.



Here are the BT Sanitary Steel Calf Pens. A whole row of the calf stanchions can be opened or closed at once. Each calf has a separate pail and cannot get another's portion. The steel pens are sanitary and durable.



The BT Barn Book is a well illustrated book of 352 pages and tells how to build a barn and fix it up. Every farmer who is building or remodelling should have a copy. It is free, if you will fill in the coupon and mail.

FREE COUPON

BEATTY BROS. LIMITED

346 HILL STREET, FERGUS, ONT.

Send me a copy of the 352 page BT Barn Book which tells how to build a barn and fix it up. You are to send it free if I fill in the coupon below.

Are you thinking of building? \_\_\_\_\_

Or remodelling? \_\_\_\_\_

If so, when will you start? \_\_\_\_\_

Your name \_\_\_\_\_

P.O. \_\_\_\_\_

R.R. No. \_\_\_\_\_ Province \_\_\_\_\_