

attractive, the waters here being thickly studded with islands, while numerous coves, bays and inlets contribute to the tortuous windings of the channels in this wondrous archipelago, and to the picturesqueness of the scenery. The islands in the bay are not less than 25,000 in number, and range in size from the merest dot on the water to the Great Manitoulin, many miles in extent. They also present a picturesque variety as to their general appearance. Some are bare and rocky; others are clothed with verdure to the very water's edge.

Here, one rises abruptly in castellated pinnacles, and anon another is densely wooded, with inviting shades, offering delightful shelter to the camper.

The steamers of the Muskoka and Georgian Bay Navigation Company afford a delightful trip among this charming scenery, connecting with the Grand Trunk trains at Midland and Penetanguishene for Parry Sound, passing through Indian Harbor, David's Bay, Moose Bay, Starvation Bay, and several narrows. From here, the journey may be extended to Point aux Baril, Byng Inlet and French River, returning thence to starting point, or to Collingwood, where direct connection may be made for Toronto and Hamilton, by rail.

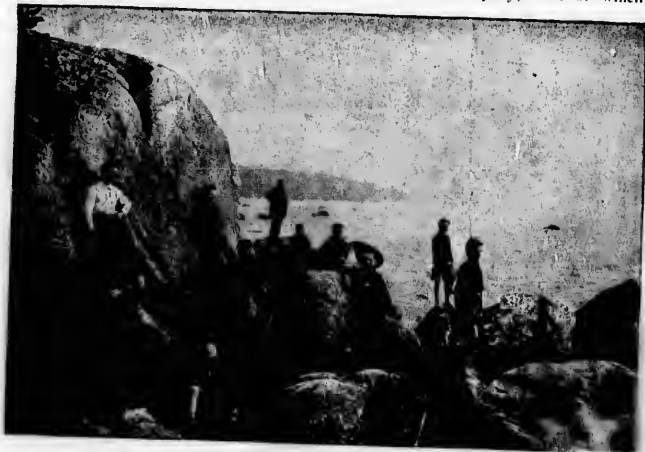
If a longer journey by water is desired, the trip along the north shore to Sault St. Marie and Mackinac island, is one worthy of high commendation. This is accomplished by the steamers of the North Shore Navigation Company, and of the Great Northern Transit Company, both of which lines are finely equipped for this

service. The boats touch at the principal ports along the north shore and on the large islands, and the passengers find frequent opportunities of enlivening the trip by a run on shore, or a flying visit to some of the many points of interest to be found on the journey.

The round trip from Collingwood, Meaford or Wiarton, occupies about six days, and as the ticket includes meals and berths, the appetizing influence of the lake breezes and the excellence of the cuisine conspire to make the journey one of both health and pleasure as well as inexpensiveness.



FRENCH RIVER, NEAR EAGLE'S NEST CLIFF.



GIANT'S TOMB, GEORGIAN BAY.