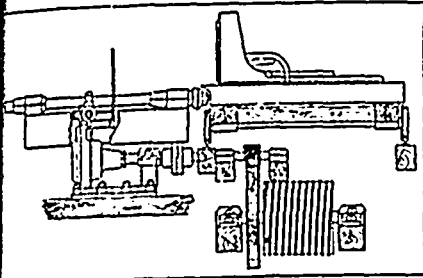


The DRAKE STEAM FEED

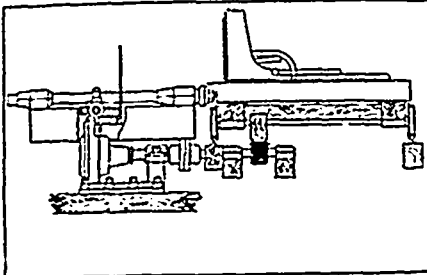


WITH ROPE FEED.

The movement of the engine in either direction is under the absolute control of the sawyer, thus accommodating the speed of the feed to the size of the logs.

Mill men who have used other makes of Steam Feeds comment favorably on the economical use of steam of our feed over others.

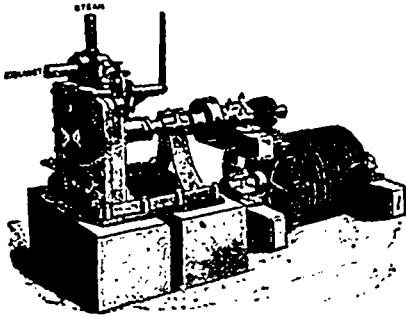
Write for Catalogue and full particulars.



WITH RACK FEED.

Embodies the following Advantages:

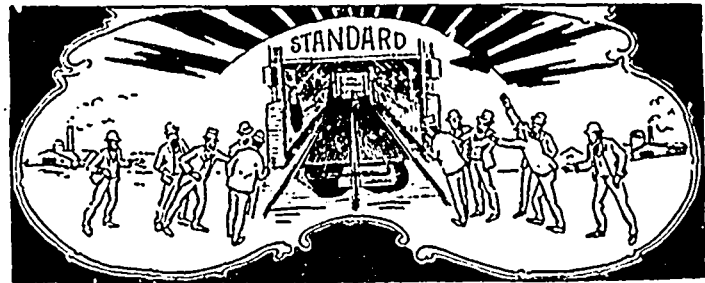
- Simplicity of Construction,
- Positive and Easy Management,
- Economical Use of Steam,
- Small Space Occupied,
- Cheapness,
- Easy Adaptation to either New Mills or those now in use.



The Jenckes Machine Co.

36-40 Lansdowne
Street,

SHERBROOKE, QUE.



TAKE A PEEP INSIDE

of the Standard Kiln, and it will be easy for you to understand why it is the Most Perfect Lumber Drier in the World. There are other "good looking" kilns. Yes, and other "good" kilns, too; but no other kiln ever made will dry so much lumber, do it so quickly and so thoroughly, and use so little steam as

The Standard Improved Compression Dry Kiln

We can prove that—by demonstration or by evidence. We will mail you the evidence of many users, if you want it. It will give you a good idea of the range and the quality of its work. Here is one firm's opinion:

OTTAWA, ONT., June 25, 1898.

THE STANDARD DRY KILN CO., Indianapolis, Ind.

GENTLEMEN,—In reply to yours of the 21st of June, I have to say that the "Compression" Kiln put in for us is "all right." It worked very nicely during the winter months, and seems to suit our Canadian climate.

Yours truly,

R. THACKRAY,

Per James Davidson.

Our illustrated catalog sets forth in a very clear manner the detail of construction, and shows plainly the application of the Standard "Moist Air" theory of drying. You can have one for the asking.

THE STANDARD DRY KILN CO.

195 South
Meridian Street,

INDIANAPOLIS, IND.



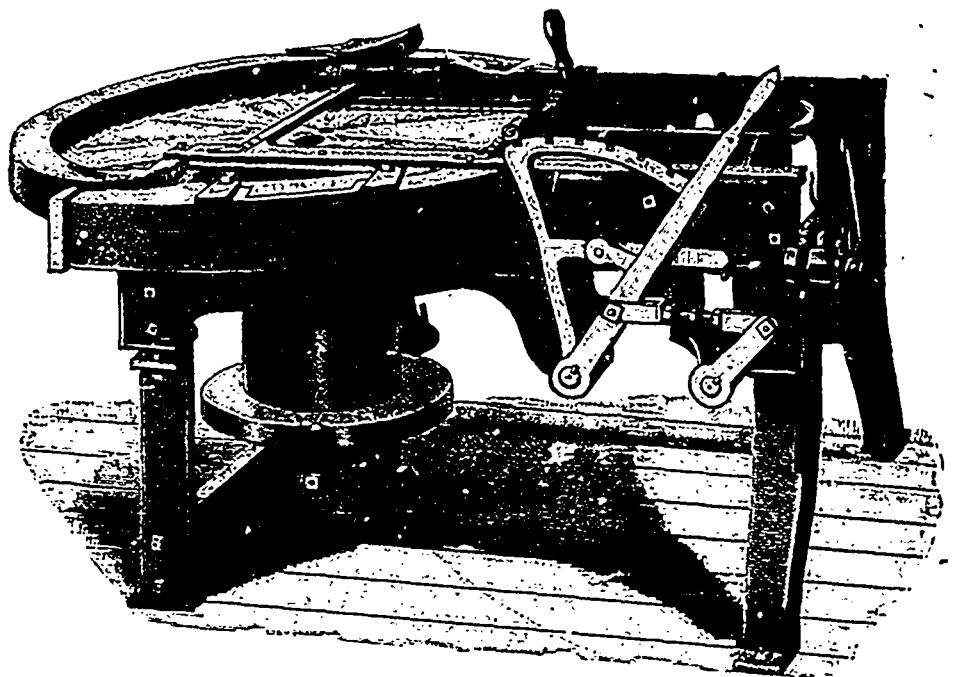
THE CANADIAN LOCOMOTIVE & ENGINE CO.

KINGSTON

ONTARIO

Manufacture

- Band Saw Mills
- Gang Saw Mills
- Circular Saw Mills
- Portable Saw Mills
- Shingle Mills
- Lath Mills
- Saw Filers, and all of
F. J. Drake's Patents



DAUNTLESS SHINGLE AND HEADING MACHINE.

Size No. 1 takes Saws up to 42" diameter. Size No. 2 takes Saws up to 48" diameter. Capacity 25,000 to 50,000 per day.

Our Patterns are New and of Modern Design. We can give you a Complete Outfit and guarantee results. No trouble to quote prices.

CORRESPONDENCE SOLICITED