

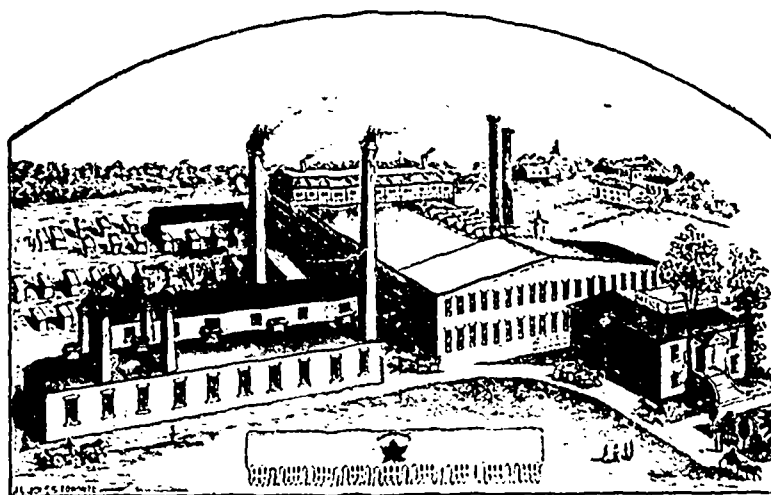
THE MAPLE LEAF SAW WORKS



Shurly &
Dietrich
GALT, ONT.

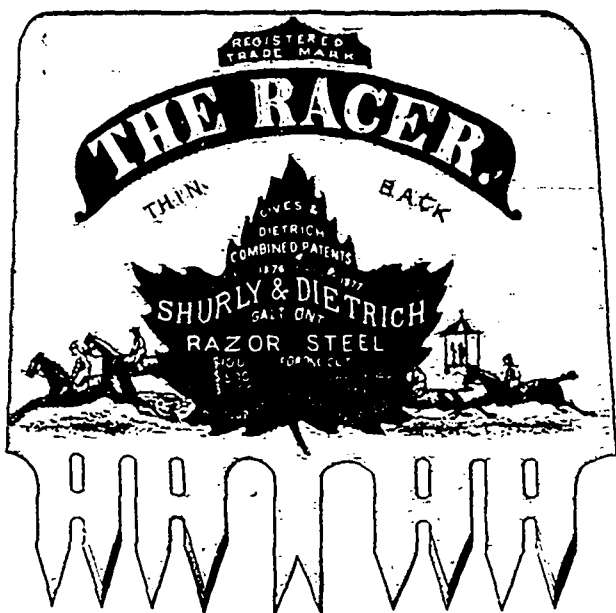
Manufacturers of

**CIRCULAR SAWS
GANG SAWS
MILL SAWS
BAND SAWS
CROSS-CUT SAWS**



Manufacturers of

**HAND SAWS
BUCK SAWS
PLASTERING TROWELS
BUTCHER SAWS
STRAW KNIVES, &c.**

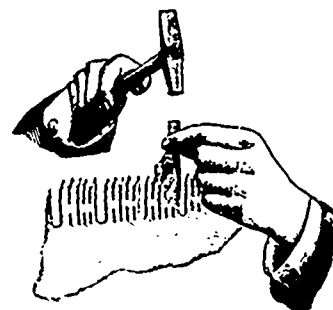


GROUND THIN ON BACK
Save Labor Save Gumming
Save Time Save Files

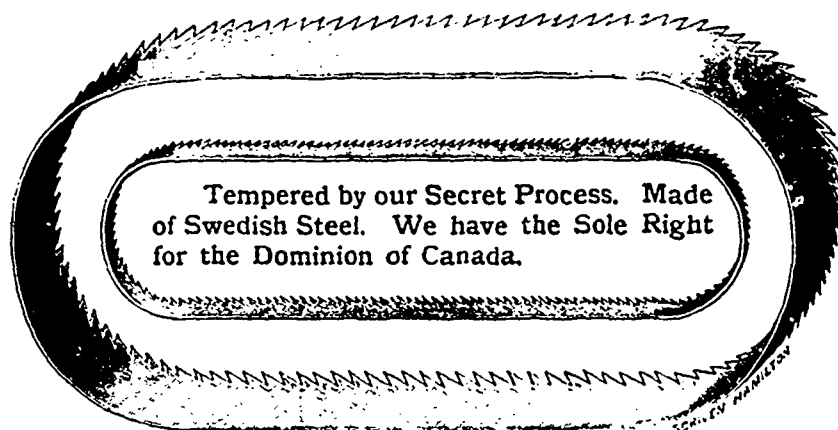
Maple Leaf Saw Set

MANUFACTURED BY
SHURLY & DIETRICH, Galt, Ont.

Directions.—Place the set on the point of tooth, as shown in the accompanying cut, and strike a very light blow with a tack hammer. If you require more set, file the tooth with more level.
If you follow directions you cannot make a mistake. Be sure and not strike too hard a blow, and it will set the hardest saw. On receipt of 40 cents we will send one by mail.



We are the only manufacturers in the world who export Saws in large quantities to the United States.



Tempered by our Secret Process. Made of Swedish Steel. We have the Sole Right for the Dominion of Canada.

This Saw Stands Without a Rival

AND IS THE
PASSTEST CUTTING SAW IN THE WORLD!

Its Superiority consists in its Excellent Temper. It is made of "Razor Steel," which is the finest ever used in the manufacture of Saws. We have the sole control of this steel. It is tempered by our secret process, which process gives a keener cutting edge and a toughness to the steel which no other process can approach.

We Manufacture

HIGH GRADE BAND SAWS

of All Widths and Lengths.

These Saws are made of Refined Swedish Steel imported direct, and tempered by our Secret Process; for Fine Finish and Temper are not excelled.