

accompanying
which stretches
St. Lawrence,
o-Silurian age,
chaeen rocks to

he north-west,
nt of about 300
y covered with
posures can be
an industrious

ers as a line of
y well marked
from "Mount
in the extreme
on a clear day.

the plain at a
g sketch, taken
ndon (Plate II).

limit of a great
gradually to the

e drawn across
ains, and about
er of the sheet,
verage elevation
ntry frequently
th-west, of 1900
Trembling Moun-
t in the district,

Logan in 1858
Mountain above
rometic, determi-
0 feet. Logan's
about 2061 feet
uilway at Chute
oling Lake is 90

mputation, must
the township of

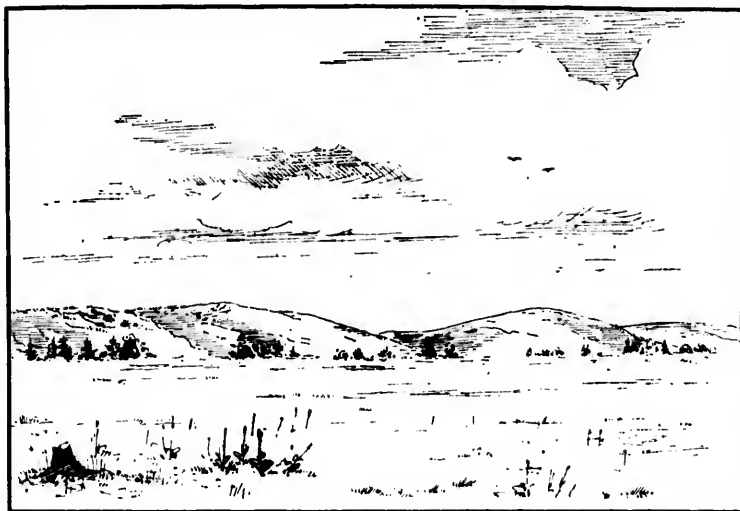


FIG. 1.—LAURENTIAN HILLS, FORMING THE EDGE OF THE NORTHERN PROTAXIS, NEAR SOUTHERN CORNER OF THE TOWNSHIP OF BRANDON.



FIG. 2.—TREMBLING MOUNTAIN, AS SEEN FROM SOUTH-WEST SIDE OF TREMBLING LAKE.

PLATE II.