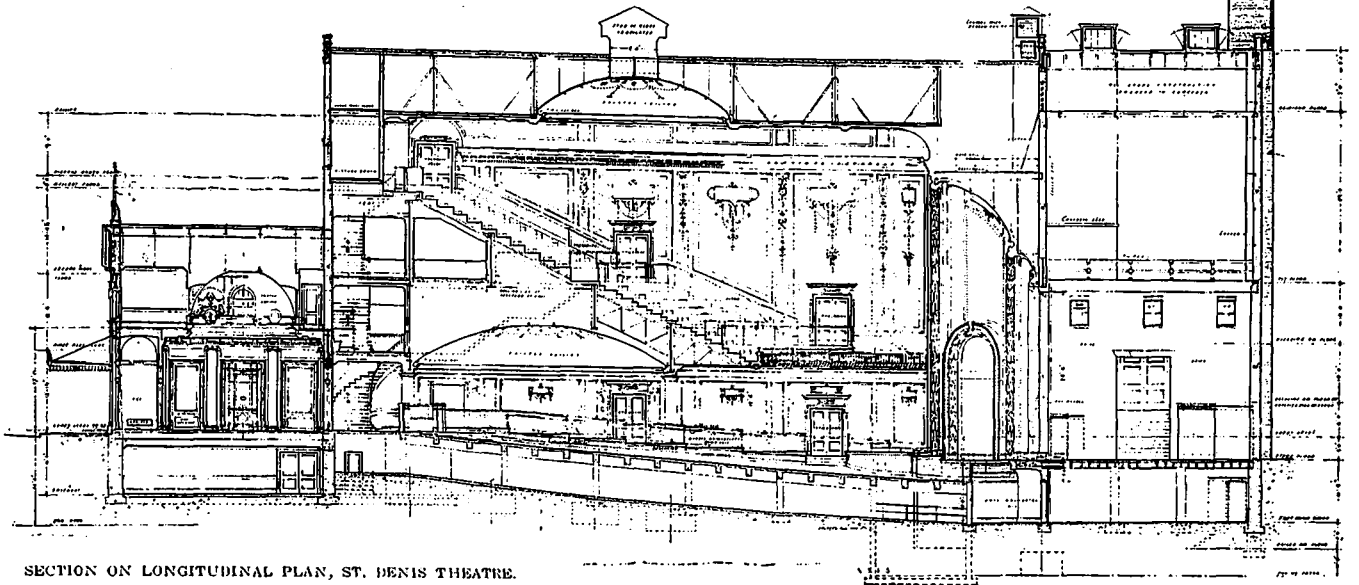


One enters the theatre through the outer vestibule, the walls of which are lined with green and gold mosaic, with a simple vaulted ceiling. The inner vestibule is about thirty feet square, the

easy access to the balcony at its various levels. As you attain your seat on either of the ground or gallery levels, you realize that every-

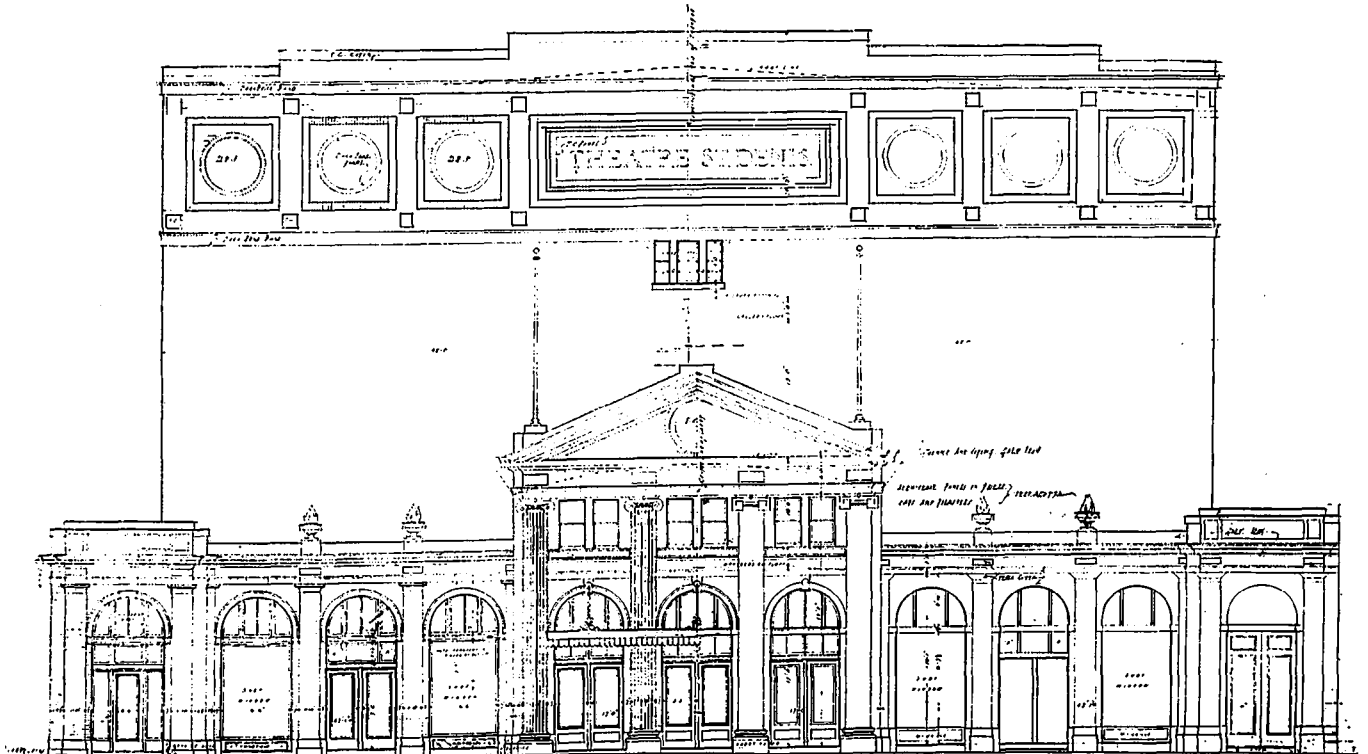


SECTION ON LONGITUDINAL PLAN, ST. DENIS THEATRE.

walls lined with faience tile in panels, separated by Ionic pilasters supporting a simple cornice, and over all a central dome decorated in stencil ornament and monotone color, the dome being pierced with lunettes and windows, enabling the management to oversee the operation of the "front of the house" from the offices over the vestibule.

One is impressed upon entering the theatre with the general feeling of spaciousness and huge span of the gallery. On either side of the foyer a wide marble staircase invites you by

thing possible has been done for the comfort of the theatre-goer. The air is fresh, there is no disturbing noise, the lighting subdued, and eventually you observe that there is no sense of oppression from over-ornamentation; the walls and ceilings are "decorated" in low applied relief of the Adams School, and the color has been applied in such a manner as to blend with the ornament in a harmonious warm golden tone, monotony being avoided by spots of color in the panels consisting of interesting sketches to enliven the attention.



FRONT ELEVATION, ST. DENIS THEATRE, MONTREAL.

BAROTT, BLACKADER & WEBSTER, ARCHITECTS.