



FIG. 31.—No. 5041.—LADIES' HOUSE WAIST. PRICE 25 CENTS.

Quantity of Material (27 inches wide) for 30, 32, 34 inches, 3½ yards; 36 inches, 3½ yards; 38, 40 inches, 3½ yards; 42 inches, 3½ yards.

Quantity of Material (36 inches wide) for

30, 32, 34, 36 inches, 2½ yards; 38 inches, 2½ yards; 40 inches, 2½ yards; 42 inches, 2½ yards.

No. 4946.—LADIES' WALKING SKIRT. PRICE 30 CENTS.

For Quantities, see Fig. 31.

FIG. 30. This singularly elegant and entirely novel costume shows two patterns. The lady's basque, Pattern 5028, price 25 cents, gives a round collar, with turned-over fronts above a vest-effect in soft folds, on each side of which is a deep revers of rich lace. A high corselet, pointed up and down, adds to the style of this handsome model. The sleeves are very high, and tight on the forearm. The fabric seen in pattern is decorated with lilies-of-the-valley, which is one of the designs seen in the new batistes. Summer silk and foulard, lawn, gingham, or nainsook, with suitable trimming can be used for this shape, or a woolen material if preferred. The lady's belt-skirt, seen in the second pattern, 5027, price 30 cents, is severely plain on the front and sides, and pleated at the back. The hem, in the picture, shows a novel and pretty effect in the use of a dotted fabric, is seen in the corselet also. This hem is very deep. The skirt trains slightly at back, as is now the fashion. Foulard, summer silk, lawn, gingham, and light woollens may all be used for this very elegant and entirely novel skirt, which has everything to recommend it in finish, and in comfort in the wearing.

FIG. 31.—In this elegant and novel costume there are two patterns. The lady's basque is made from Pattern 5031, price 25 cents, and shows the novel effect of shirrs and frilling, this last turned toward the throat, both front and back, above long pleats of the fabric, which continue to the

line of a pointed front and back at which the waist terminates, and, as seen in the picture, with a belt of passementerie above a very deep waist-flounce of lace. The sleeves are high, the puff being laid in pleats below the high effect, and held down on the centre of the upper arm. This effect is very novel. Below it the sleeve is tighter, and has a band at wrist above a very deep frill. Material, black or white lace. The second Pattern, 4946, price 30 cents, shows a walking-skirt, of which the front is plain and clinging, and the back in deep, regular pleats. The hem, as seen in picture, has a very deep flounce of the same piece-lace, decorated with the design now so fashionable and called "love-knots," and this fabric is worked in scallops on the lower edge. The garniture of ribbon is also shaped into love-knots, and set on the top of the flounce. This model, shown in lace, which may be either white, cream, or black, is equally fashionable in batiste and summer silk, and is one of the latest that has appeared.

FIG. 32.—This novel and elegant costume shows two patterns, the lady's coat-basque, Pattern 5014, price 35 cents, has a close collar, a buttoning on centre between folds of the crepe, shown in figure as trimming, and of which the long side-piece, as well as the sleeves, are also formed. The sleeves are high, and tight below the puffing. The front of the waist is pointed, which adds to the elegance of this very desirable model. Material, silk or cloth. The walking-skirt

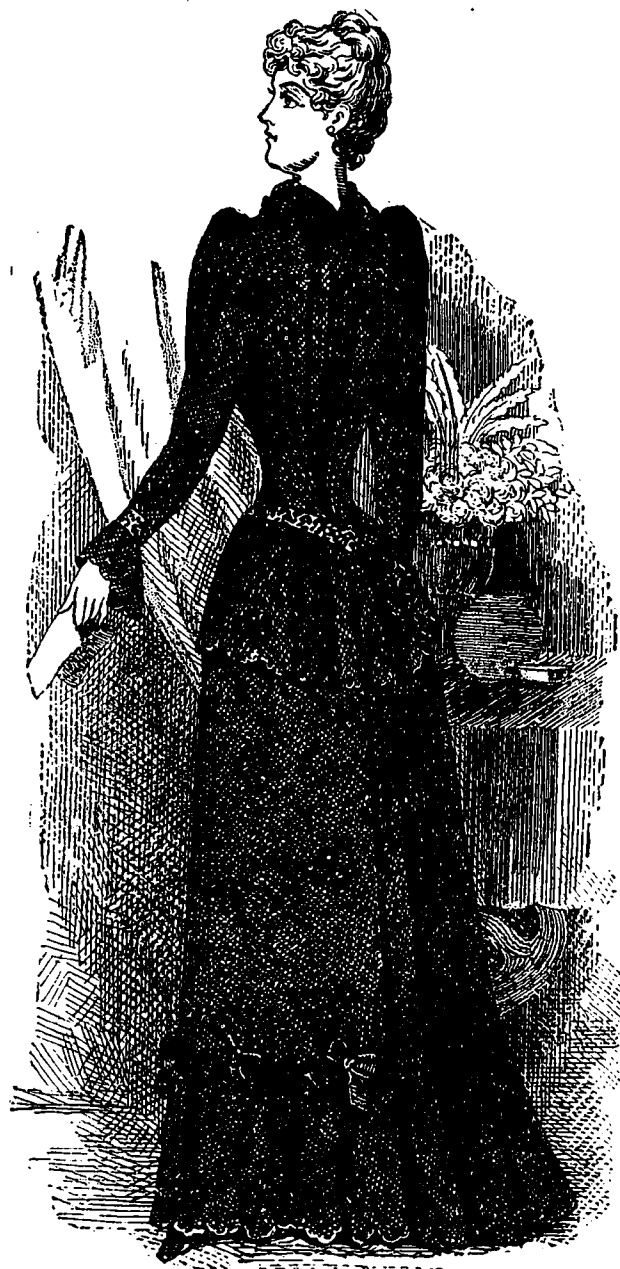


FIG. 32.—No. 5014.—LADIES' COSTUME. PRICE 35 CENTS.

Quantity of crepe (27 inches wide) for 30, 32 inches, 4 yards; 34, 36 inches, 4½ yards; 38 inches, 4½ yards; 40 inches, 4½ yards; 42 inches 4½ yards; 44 inches, 4½ yards.

Quantity of Woolen Goods (42 inches wide) for 30, 32, 34, 36, 38, 40 inches, 5½

yards; 42 inches, 5½ yards; 44 inches, 5½ yards.

This design is as suitable for any woolen material with silk or velvet accessories as for Henrietta and crepe.

For the medium size, 1½ yards of 21-inch silk will be required for lining hip portions, revers, and collar.

here shown is from Pattern 5014, price 35 cents, and is of the bell shape, plain on front and sides, and pleated at back. The hem, as seen in picture is adorned with a very deep garniture of crepe, which is very effective on black silk, cashmere, or camel's-hair, as also on fine serge. This skirt is one of the very latest issued.

FIG. 33.—This simple but elegant model shows two patterns. The lady's house-waist, made from Pattern 5011, displays a turned-down and somewhat close collar, high sleeves of the pagoda shape, a central fold with buttons, on each side of which the fronts are gathered above a broad thong-belt, and form a ruffle below. The cuffs are broad. This waist, while comfortable in linen and cotton materials, is much worn this season in surah, especially gray and black, and in wash-silk. It is also seen in flannel, flannel-ette, striped gingham, and saten, as well as in nainsook and lawn. Every lady provides herself with one or more such waists as soon as the warm weather sets in, as they are much more comfortable and cool than a lined waist or even jersey. Muslin is used for such waists by some ladies. In Pattern 4946, price 40 cents, of this example, a very desirable model of a recently issued walking-skirt is to be found, having a perfectly plain and clinging front, as well as close sides, and being pleated at the back. The deep hem shows a slight garniture of braid in picture. The use of chevrons, plaids, checks of all kinds, summer silks, gingham, muslin,

lawn, linen, saten, and flannel is general in this style of skirt, which is one of the prominent favorites among those which have lately appeared.

FIG. 54.—This pretty costume shows two patterns. Pattern 5040 is that of a miss's house-waist, price 20 cents, and shows a turned-down collar with tie, high sleeves of the pagoda shape, and with a deep cuff, into which the lower portion is gathered. The fronts are in loose folds, which are belted at waist and form a ruffle below. This model is recent, and may be made in any cotton fabric, as well as in foulard, China or India silk, and flannel, or flannel-ette. The English skirt, seen in the same figure, is made from Pattern 4617, price 20 cents, and is one of the most recent of those issued this season. It has Arab folds on the front, and is plain on the sides. The hem is ornamented with braid. The back is pleated. Either woollen or silk is adopted to this elegant and effective model.

FIG. 55.—This charming costume shows two patterns, a guimpe made from Pattern 5000, price 15 cents, and which is shirred, and has a ruffle at the top. This is a very new model for a child's guimpe. Material, muslin. The second model is from Pattern 5035, price 20 cents, of a little girl's dress, of which the waist is short, the skirt gathered all round, and reaching the top of the shoe, like the Kate Greenaway dresses, which are as much worn as ever by little children. The sleeves are a gathered puff,