

invited within a few days for the new 5,000,000 gallon electric pump for the high level reservoir.

TORONTO, ONT.—Plans of water-works and sewerage systems to be constructed at Newcastle, N. B., are on view at office of Willis Chipman, the consulting engineer, 103 Bay street, this city.—J. W. Payne, of Hall & Payne, barristers, will build a pair of residences on Tranby avenue.—Tenders are wanted at 1437 Queen street east for erection of building.—James Ross, of Montreal, and William MacKenzie, H. M. Pellatt, Frederic Nicholls and S. G. Beatty, of this city, are seeking incorporation under the name of the Canadian Power Co., the object being to generate electric power at Niagara Falls and transmit it to Toronto and other points.—C. F. Wagner, architect, 18 Toronto street, wants tenders by 5th inst. for erection of brick residence on Bathurst street.—It is rumored that the Canadian Pacific Railway Co. have in view the erection of a large hotel in this city.—The Board of Control is asking for tenders up to 15th inst. for the following: Supply of 240 feet 10-inch steel pipe; construction of new boilers at main pumping station; construction of 300 feet of cribwork at foot of Bay street.—

Tenders will be invited shortly for an asphalt pavement on Morris street.—Ratepayers on both sides of Spadina avenue, from College to Queen street, have petitioned for an asphalt pavement, also the ratepayers on Church street, from Queen to Bloor. The latter will cost about \$80,000.—The city engineer has recommended the construction of the following works: Concrete sidewalks—Gwynne avenue, west side, King to Queen street, \$1,549; Park road, both sides, Crescent road to South Drive, \$973; Ontario street, east side, Wilton avenue to Gerrard street, \$1,426; Wellesley street, north side, from No. 444 to a point 124 feet east of Parkview avenue, \$201; Sydenham street, north side, Berkeley to Parliament, \$511; Jameson avenue, west side, King street to railway tracks, \$988; Parliament street, east side, Wilton avenue to Oxford street, \$342; Cowan avenue, east side, King to Queen street, \$928; Gwynne street, east side, King to Queen, \$1,548; Parliament street, west side, from first lane north of Wilton avenue to Carlton street, \$1,432; Winchester street, north side, Rose avenue to Parliament street, \$259; Dovercourt road, west side, McKenzie crescent to Dundas street, \$795; Dunn avenue,

east side, King to G. T. R. tracks, \$2,304; Dunn avenue, west side, King street to G. T. R. tracks, \$2,283; brick pavement, Westmoreland avenue, from Bloor street to Van Horne street, \$22,965; brick pavement, Orde street, from Murray street to McCaul street, \$3,290; macadam roadway, Grange avenue, Beverley street to Huron street, \$1,380; asphalt pavement, Morris street, from Huron to Spadina avenue, \$4,075; cedar block pavement, Stafford street, from Wellington avenue to Clifford street, cost \$5,200.—Darling & Pearson, architects, have prepared plans for extensive alterations and additions to building in Winnipeg for the Canada Life Assurance Co.—S. H. Davis, architect, 61 Victoria street, is taking tenders from all trades up to noon to-day (Wednesday).—C. F. Wagner wants tenders by 5 p. m. of Friday next for residence on Balsam avenue.—Vestry meetings of the various Anglican churches were held on Monday last. It was decided to raise \$8,000 for extension of St. Mary Magdalene's church, to enlarge St. Stephen's church, and to increase the accommodation and install a new pipe organ at St. Paul's church. —Building permits have been granted

(Continued on page 3.)

DEBENTURES

Municipalities contemplating the issue of Debentures will find it to their advantage to communicate with

G. A. STIMSON & CO.

Investment Dealers

24 and 26 King St. W.

TORONTO

JOSSON CEMENT

Manufactured at.
NIEL ON RUPELL

Is the Highest Grade Artificial Portland Cement and the Best for High Class Work. Has been used largely for Government and Municipal Works.
TO BE HAD FROM ALL CANADIAN DEALERS

C. I. de Sola, Manager in Canada 180 St. James Street, MONTREAL

The Canadian Bridge Co., Limited

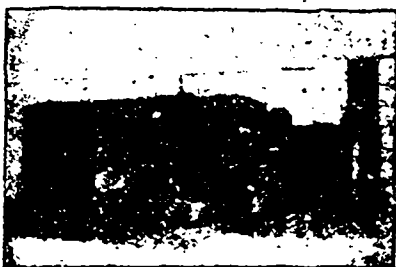
WALKERVILLE, ONT.

MANUFACTURERS OF

RAILWAY AND HIGHWAY BRIDGES

Locomotive Turn Tables,
Roofs, Steel Buildings and
Structural Iron Work of all descriptions.

PERFECTION STEEL-CLAD AND BRICK SET INCINERATORS



MANUFACTURED
BY

Toronto Furnance & Crematory Co., LIMITED

14 and 16 Queen St. East, TORONTO, CANADA.

Experts in sanitary disposal of dangerous wastes,

Garbage, Refuse, Night Soil, Dead Animals,

For Cities, Towns, Hospitals, Hotels, Abattoirs, etc.

The plants embody the newest features of modern practice and are constructed to meet the requirements of the smallest towns and the largest cities, capacities ranging from 4 to 100 tons daily. Correspondence invited.

RAILS

FOR SALE

BEST ENGLISH MAKE—VERY LITTLE USED.

200 tons 56 lbs. Steel Relaying Rails } Including Plates
2300 " 60 " " " " } and New Bolts.

SUBJECT TO INSPECTION.

DELIVERY F.O.B. MONTREAL.

ASK FOR SAMPLE SECTION OF RAILS.

L. H. GAUDRY, 101 St. John St., Quebec