

MUNICIPAL ENGINEERS, CONTRACTORS AND MATERIALS

WILLIS CHIPMAN

Hon. Grad. McGill University.
M. Can. Soc. C.E. M. Am. Soc. C.E.
Mem. Am. W.W. Ass'n.

WATERWORKS, SEWERAGE WORKS, GAS WORKS, ELECTRIC LIGHT AND POWER PLANTS
Reports, Surveys, Construction, Valuations
103 BAY STREET - TORONTO

RODERICK J. PARKE

A. M. American Institute E. E.
CONSULTING ENGINEER

Design and Superintendence of —Electric Railroads, Steam and Hydraulic Plants, Long Distance Power Transmissions, Municipal Electric Lighting Systems, Welding and Electrolytic Processes.
Estimates Valuations Tests Reports for Financial Institutions
409-410 Temple Building, TORONTO, CANADA
Long Distance Telephone 8017.

W. T. ASHBRIDGE, C.E.

A. M. CAN. SOC. C.E.

609 Temple Building, - TORONTO
Special Attention given to

MUNICIPAL IMPROVEMENTS

Sewerage Works, Water Supply, Pavements. Concrete Construction, Etc.

R. E. SPEAKMAN, C.E.

A. M. Inst. C. E., 1878.

CONSULTING ENGINEER

(LATE GALT & SPEAKMAN.)

Waterworks, Sewerage and Sewage Disposal. Municipal Improvements. Granolithic Pavements. Electric Light Plants. Drainage and Irrigation of Land. Coal Handling Plant and Machinery. Plans, Specifications and Estimates. Construction and Valuations.

Canada Life Building - TORONTO

Notice to Contractors

WE can save you money on.....
Granolithic or Crushed Stone

of any size, as we have the most complete plant in Canada. You will consult your own interests by getting our prices. We also make a specialty of Slate, Tile, Granite and all kinds of Stone. Crusher at Jarvis street wharf.

THE POWELL GRANITE & MARBLE CO'Y,
Phone 3440. Office, 482-484 Yonge St., Toronto

THE PHOENIX BRIDGE & IRON WORKS

MANUFACTURERS OF STAY BOLTS AND ALL KINDS OF RIVETS

STEEL AND IRON STRUCTURAL AND ARCHITECTURAL WORK

Beams, Channels, Angles and Tees always in stock.

29 to 49 McGill Street,

P.O. Box 893.

MONTREAL

Prices on Application.

Dominion Bridge Co., Ltd.

P. O. Address, MONTREAL, P. Q.
Works at LACHINE LOCKS, P. Q.

STEEL BRIDGES

For Railways and Highways

Piers, Trestles, Water Towers
Tanks, Buildings, Roofs, Girders,
Beams and Columns

Toronto Agent: GEO. B. EVANS,

38 Canada Life Bldg., TORONTO, ONT

THE CANADIAN PORTLAND CEMENT CO., LIMITED

Works: STRATHCONA, ONT. MARLBANK, ONT.

ST. LAWRENCE PORTLAND CEMENT COMPANY - MONTREAL

"RATHBUN'S STAR" Brand

MANUFACTURED BY "BEAVER" Brand

"ENSIGN" Brand

For Prices Write

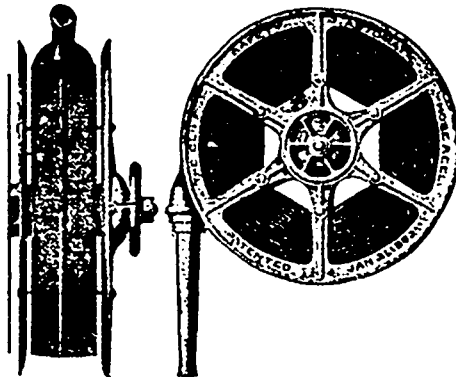
THE RATHBUN COMPANY,

Sole Sales

Agents

DESBRONTO, ONT.

CLIFF SAFETY AUTOMATIC REEL



Unreeling hose opens valve; water received in ten seconds. For Public Buildings and Warehouses, standard of the U.S. Government.

F. E. CAME, MFR.

17 Place d'Armes Hill,

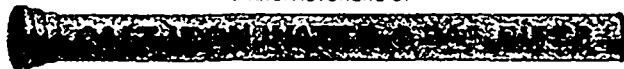
REAL.

Montreal Pipe Foundry Co. Ltd.

SUCCESSORS TO

DRUMMOND, McCALL PIPE FOUNDRY CO. LTD

MANUFACTURERS OF



SPECIAL CASTINGS
FLANGE PIPE
BRANCHES
HYDRANTS
VALVES
VALVE BOXES

OFFICES
CANADA LIFE BUILDING

MONTREAL

Cast Iron Water and Gas Pipes, etc.

Londonderry, Nova Scotia,

LONDONDERRY PIPE FOUNDRY

ALEX. GARTSHORE, President. J. G. ALLAN, Secretary and Treasurer. JAS. THOMSON, Vice-President and General Manager.

THE GARTSHORE-THOMSON PIPE & FOUNDRY CO. LIMITED.

Manufacturers of:::

Flexible and Flange Pipe,

Special Castings and all kinds of

Waterworks Supplies.

CAST IRON PIPE

3 inches to 60 inches diameter.

For Water, Gas, Culvert and Sewer



HAMILTON ONT.

