

VANCOUVER.

Vancouver is the western terminus of the C. P. R. It came into existence when this trans-continental line was built and has been making steady progress ever since, and is now recognized as one of the most important shipping places in Canada. It would appear to possess all the natural advantages necessary for a large shipping

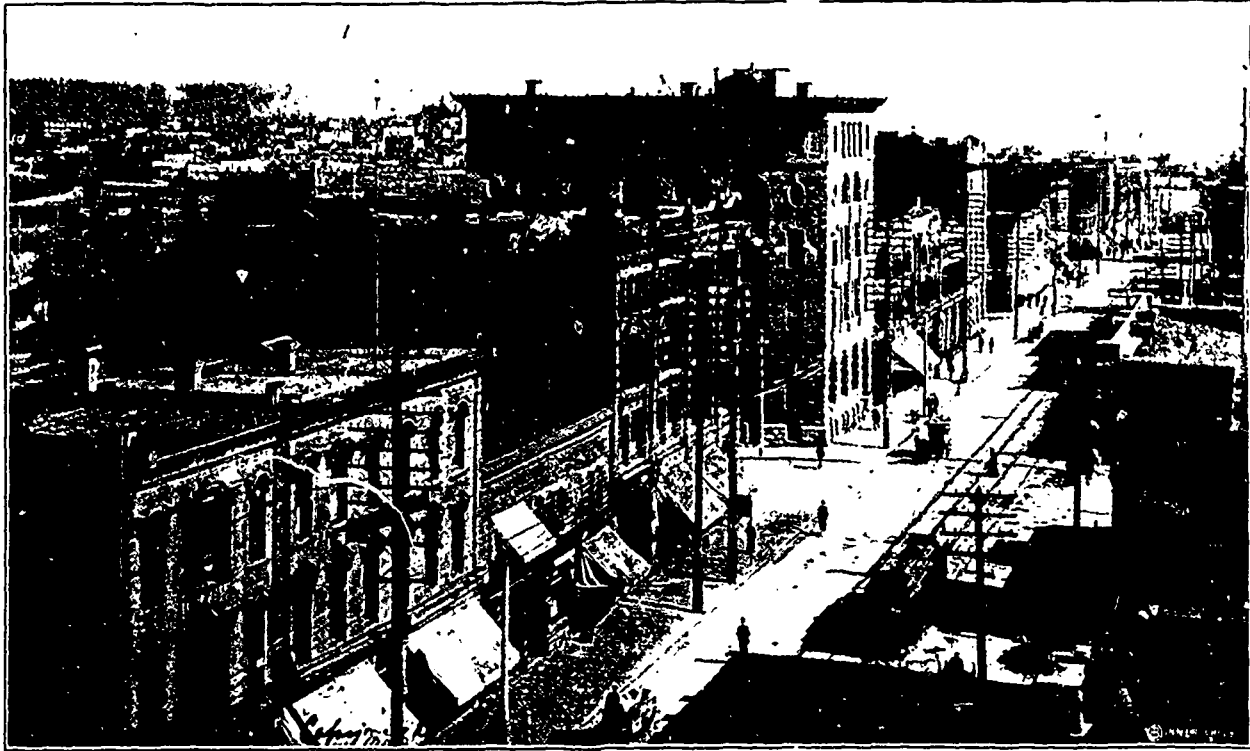
large proportion of the residences are built on this peninsula, but a large number of dwellings and some stores have been built on Mount Pleasant and Fairview, which are separated from the main portion of the city by an arm of the sea, known as False Creek.

The business blocks are very much better than would be expected in so young a city, and the principal streets, such as Cordova, Hastings, Westmin-

lety. The soil and climatic conditions here are such that very little care is necessary to keep the grounds looking beautiful.

Shipping forms a very large proportion of the business transacted. As has already been said there is a magnificent harbor here, which extends for many miles inland, and opposite the city is three miles in width. The entrance is narrow, being not over half a mile wide, but it is safe at all stages

About a year ago a marine railway was constructed having three tracks, 610 feet long, a cradle 212 feet, and having a capacity of 2000 tons gross weight. A large number of vessels come here during the year to load with lumber and other freight, bringing in many cases full cargoes of freight from foreign countries. Besides these ships making irregular trips there are a large number sailing under regular schedules. The C. P. R. Company has



Hastings Street, Vancouver.

port, chief among them being its harbor, which is one of the finest in the world, and is capable of holding whole fleets of ocean vessels.

The site chosen for Vancouver is on a peninsula, which is bounded on the north by Burrard Inlet, and on the west by English Bay. The business houses, as well as a

ster and Granville, have an air of wealth and solidity which leave a very favorable impression upon the mind of the visitor. In some portions of the city also, and particularly in what is known as the "west end," there are very handsome homes surrounded by grounds containing trees, shrubbery and flowers of great beauty and var-

ety of the tide as the channel is deep and unobstructed. English Bay and False Creek also afford accommodation for shipping. The wharves are very extensive, the C. P. R. Co.'s accommodations and warehouses alone occupying a frontage of about 2,500 feet, and in addition to these several other companies and the city own wharves.

three steamers making regular trips to China and Japan, also three to Australia, calling at Honolulu and Fiji Islands, and a steamer daily to and from Victoria, and a regular service to the north handling the Klondike business. The Union Steamship Company has several steamers making regular trips to Skeel bay, Alert bay, Rivers Inlet, Juneau, Dyea, Skagway,



Westminster Avenue, Vancouver.