

Brandon, The Wheat City.

Brandon, the second city in size and business importance in Manitoba, is situated on the south slope of the Assiniboine river, 180 miles from Winnipeg by the Canadian Northern Railway and 132 miles by the Canadian Pacific Railway. It has a very pretty situation, overlooking the valley of the Assiniboine river. A great deal of care has been given by the citizens to the planting of trees and in other ways beautifying the grounds surrounding their homes. These trees have now grown to a large size, and in many parts of the city form arches along the sidewalks. The soil is light so that the streets quickly dry up after a rain-storm, and even during the continuance of a rain the mud is never very bad. The slope of the land gives excellent drainage. There are a large number of very fine residences and the public buildings are certainly a credit to the city as will be seen from the view of some of them which we print in this number, by courtesy of the Brandon Sun. The post office, court house and jail, land titles office, asylum for the insane and hospital, are all substantial buildings of modern design. Many of the church and school buildings are also very handsome. The central school is a two-story brick, the largest school building in Manitoba. Mention has already been made of the Methodist church erected a year ago in the opposite corner to this the

Presbyterians are now erecting a very handsome brick building, which will be completed shortly, and is to cost between \$30,000 and \$35,000. It is to have seating capacity for about 1,000 with a basement Sunday school room, seating about 600. The Brandon (Baptist) college, work on which was commenced in June, 1900, has now been finished, and is to be occupied at once. It is an imposing looking brick building of five storeys, the fittings and furnishings being of the most modern type.

Brandon has waterworks, electric and telephone systems. The electric light company has had a dam built on the Little Saskatchewan river some miles from the city and are installing a large plant which, it is expected, will furnish sufficient power for the lighting of the city, and also to run a large number of manufacturing plants. It is said that a cheap rate can be given for this power for manufacturing purposes, and if this can be done it should act as a great stimulus to these industries.

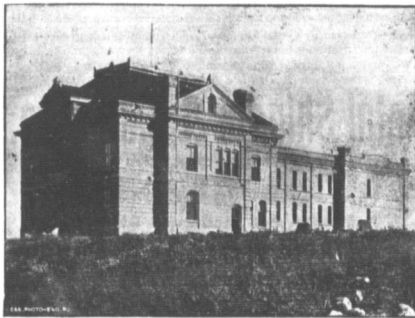
Looked at from a business standpoint Brandon occupies an enviable position. It possesses almost unexcelled railway facilities. It is an important divisional point on the Canadian Pacific Railway. Being situated on the main line of this system it has direct communication with the towns to the east and west, then trains are run from here over the Souris see, on extending to Estevan, 104 miles, connecting with the Southwestern and Pembina sec-



City Hall, Brandon



Brandon Post Office and Merchant's Bank



Court House, Brandon

tions, over the Pipestone section for 128 miles to Aroostook and the North Central and Saskatchewan and Western 71 miles to Minota, connecting with the Manitoba and North Western section. Recently a portion of the staff of dispatchers employed at Winnipeg has been moved to this point, and the running of the trains over a large portion of the lines in Manitoba will be regulated from here. On the Canadian Northern Railway a passenger train makes tri-weekly trips to Winnipeg and a mixed freight and passenger train leaves here on the alternate days for Hartney, thus it will be seen that the facilities for travelling and shipping goods are of the very best. Within a radius of 50 miles of Brandon there are some 60 towns, along the different lines of railway, which could be readily supplied by jobbers here. Recently a very favorable freight rate has been secured by jobbers on goods shipped to country merchants, and the city council has substituted for the old system of assessment and tax levy the system of assessing according to the rental value of the premises occupied and under the present favorable conditions there are good reasons for ex-

pecting that a much larger jobbing business will be handled from here in the near future. Already there are a large number of firms here doing a jobbing business and frequently word is received of other companies being established. There is a large flour and oatmeal mill here and it is reported that another will be started in the near future.

Another enterprise to be started here, and one which is attracting considerable attention from all points in the province is a hosiery factory. This will be built by the Brandon Hosiery & Twine Co., a limited company, with a capital stock of \$100,000 divided into \$20 shares. These shares are being subscribed to all over the country, not more than five being sold to any one person. It is claimed by the promoters that a considerable saving can be effected in freight charges if the raw material can be brought direct from the Philippine Islands to Vancouver, or some of the other ports on the Pacific coast, at a much less expense than by the present route around Cape Horn to the Atlantic ports, and the freight on the raw material from Vancouver would also be less than on the manufactured article from the east. It is claimed, also, that a favorable rate can be secured on the risk and other charges incurred in the countries bordering on the Atlantic. The only reduction to be made in the price of this twine is that of one cent a pound to account the saving in freight, an assured market close at hand, and other advantages possessed by this factory. It should prove a success. Jobbers have been called for and it is intended to start work on the erection of the factory as soon as possible, as it is deemed advisable to be ready for operating not later than the first of next year. The capacity of the plant will be 100,000 yards per day of 10 looms, and about 35 hands will be employed.

Another manufacturing industry here is the felt factory, owned and operated by the Manitoba Felt and Yarn Works Limited. This company was formed last March to take over the business started by Waddington, Hesson & Co. They manufacture woolen goods such as horse blankets, rugs, sole felt, yarns, etc., and it is the intention to make felt boots and machinery for this purpose. This factory employs from 14 to 16 hands, when running full time. A felt factory was started here some years ago by Senkell Bros, but was burned down and never rebuilt.

The Brandon Machine Works have been running for a number of years and the business has increased to such an extent that it has been deemed necessary to secure larger premises, and three buildings are now being erected for this purpose on Bossier avenue, in the east end of the city. The largest of these buildings is L-shaped, and is 120x112x50 feet in dimensions, the other two are 40x60 feet and 30x60 feet respectively. These are solid brick with metal roof and one