

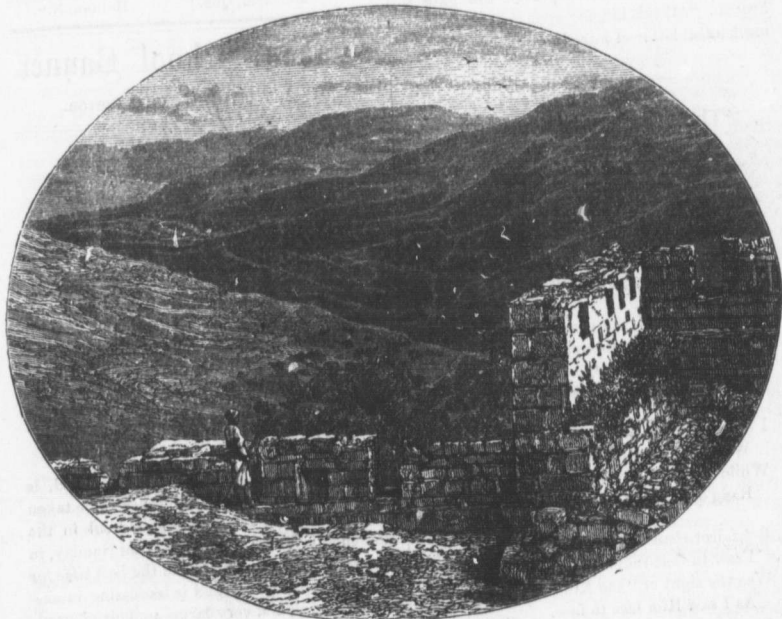
SATURDAY SCHOOL BARRER

for
TEACHERS
AND
YOUNG PEOPLE.

VOL. XXIV.]

SEPTEMBER, 1890.

[No. 9.]



MOUNTAINS ROUND ABOUT JERUSALEM.

A Shield Which You May Throw Around Them.

BY MARGARET MEREDITH.

WHEN young people of your acquaintance go off to new homes, especially young men or boys going to the city, try to introduce them to a pastor and church. I have but recently felt

the great value of this simple piece of care. One of my Bible-class, an attractive country lad, went to seek his fortune in Philadelphia. Even in his country home he had not been very church-going, and the bold and taking-for-granted tone in which I planned with him to write a letter to the pastor of the church which should prove to be nearest him when he got settled was not quite in accord with my inward.