

cealed, or else by passing the wire laterally through the upper part of the calyx and the lower part of the petals. In the latter case the two ends of the wire should be bent down and twined together. The Camellia is also sometimes cut off with a small portion of the stem, and tied to a small stick or twig. Be very careful in handling the Camellias, as the slightest bruise will impair their beauty. The Roses can either be cut with long stems or tied to supports. The smaller flowers should be arranged in very small bunches, or singly, and also tied to twigs or *whisk*. If the bouquet is of the pyramidal form it should be made on a strong stick, commencing at the top with the smaller flowers, and gradually widening at the base with the larger, taking care to assort the colours, so as to make as much contrast as possible, and to fill in the interstices between the larger flowers with the smaller.

If the bouquet is to be flat, it is not absolutely necessary to have a strong stick in the centre, but I would recommend it on account of its advantages in preserving a symmetrical form. Begin with a Camellia or Rose for the centre, then a circle of small flowers, then say four or more roses or Camellias disposed around the centre, and then another circle of small flowers; and then, if the bouquet is not large enough, another row of Camellias or Roses, and few more small flowers, finishing with a circle of Rose or Oak-leaf Geranium leaves tied singly to whisk straws, and some Arbor Vitæ, Cedar, or other evergreen, below all. To preserve a flat or oval surface to a bouquet, be careful not to tie the stems or twigs too high up on the centre stick, for in that case the flowers would face *outward*, as in a pyramidal bouquet, instead of *upward*.

If you wish a bouquet to be kept for a long time, the interstices between the twigs or stems should be filled with moss, evergreen, or anything that will retain moisture.

It will add much to the grace and beauty of the bouquet to introduce skillfully some handsome green foliage to break the monotonous effect, and some of the smallest and choicest flowers should be allowed to project beyond the surface of the bouquet.

Large bouquets, or pyramids, for table ornaments, are generally made on a frame-work of evergreen. For this purpose, take a number of branches of Cedar, Hemlock, or other evergreen, and bind them in a kind of sheaf, with strong twine, commencing at the top. After it is properly secured, trim off the stems at the base with a knife, so as to be perfectly even, and with a pair of scissors or shears clip the top so as to form a perfect cone. The flowers are to be inserted into this.

C H E S S .

(To Correspondents.)

J. B.—Your problem is still incorrect. What is to prevent Black playing his Kt to K B 4th on his second move? or if to avoid this you play Q to R 2d, with the intention of mating with B on 3d move, Black discovers double ch., and has decidedly a better position.

R. G. S., Cobourg.—We quite agree with you. "The Indian Problem is not at all difficult, when you know how."

C. J. H., Hamilton.—You have made a serious error in recording the game you have sent us. We have tried them, but at the 20th move White is required to play Q B to Q 3d!

Solutions to Problem No. 19, by Amy, G. D., C. J. H., Hamilton, J. B., and a Subscriber, are correct.

Solutions to Enigmas in our last, by G. P., Amy, C. J. H., Hamilton, R. G. S., Cobourg, and Evans, are correct.

SOLUTION TO PROBLEM NO. XVIII.

<i>White.</i>	<i>Black.</i>
1. B to Q B sq.	P moves.
2. R to Q 2d.	P moves.
3. K moves.	K moves.
4. R mates.	

SOLUTION TO PROBLEM NO. XIX.

<i>White.</i>	<i>Black.</i>
1. K to Kt 5th.	K to his 3d.
2. B takes B.	P to K Kt 4th or (A).
3. Q to K B 6th (ch).	K moves.
4. Q mates.	

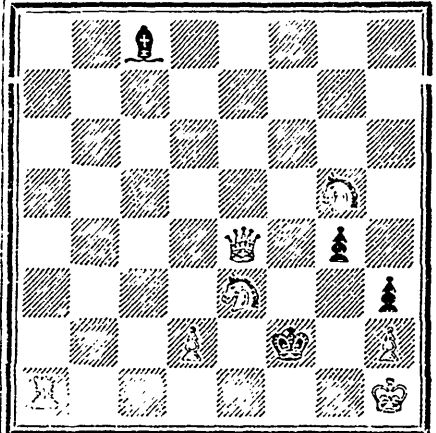
(A.)

3. B to K Kt 6th.	K, or P at Kt 6th, moves.
4. Q mates.	Anything.

PROBLEM NO. XX.

From a Correspondent.

BLACK.



WHITE.

White forces Black to checkmate him with
Bishop in three moves.

ENIGMA.

No. 54. By M. D'Orville.

WHITE.—K at his Kt sq; R at K R 6th; R at Q R 5th; Kts at K B 6th and Q Kt 5th; P at Q B 4th.

BLACK.—K at Q Kt 3d; Q at her 7th; Rs at K R 7th & Q R 5th; B at Q Kt 2d; Kt at K Kt sq.

White to play and mate in three moves.