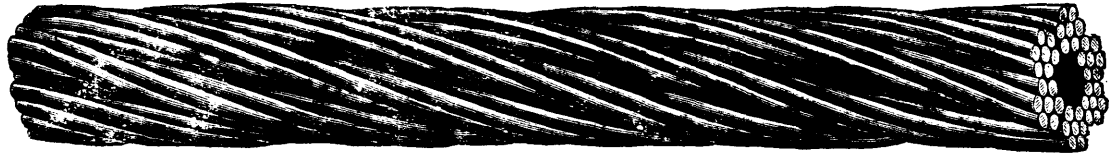


THE DOMINION WIRE ROPE CO. LIMITED

MONTREAL, CAN.

Manufacturers of "LANG'S" PATENT WIRE ROPES



FOR COLLIERY AND GENERAL MINING PURPOSES.

ALSO BEST STEEL WIRE ROPES FOR ALL PURPOSES.

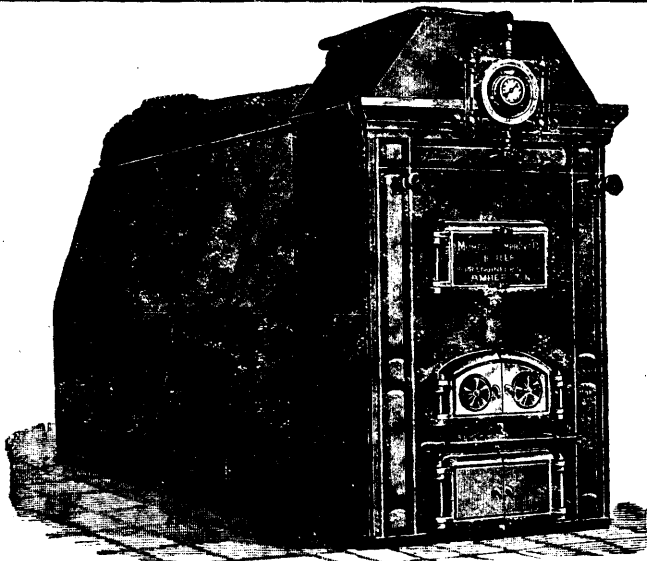


BRANCH OFFICES: Vancouver, B.C.
Rossland, B.C.

Winnipeg, Man.
Toronto, Ont.

Ottawa, Ont.
Halifax, N.S.

CATALOGUE ON APPLICATION.



The Mumford Improved Boiler

Has internal firebox, water circulation similar to a Water Tube boiler, large heating surface and special arrangements for preventing and removing scale. Tests show high economy. Built with sheet steel case or for brick casing as desired.

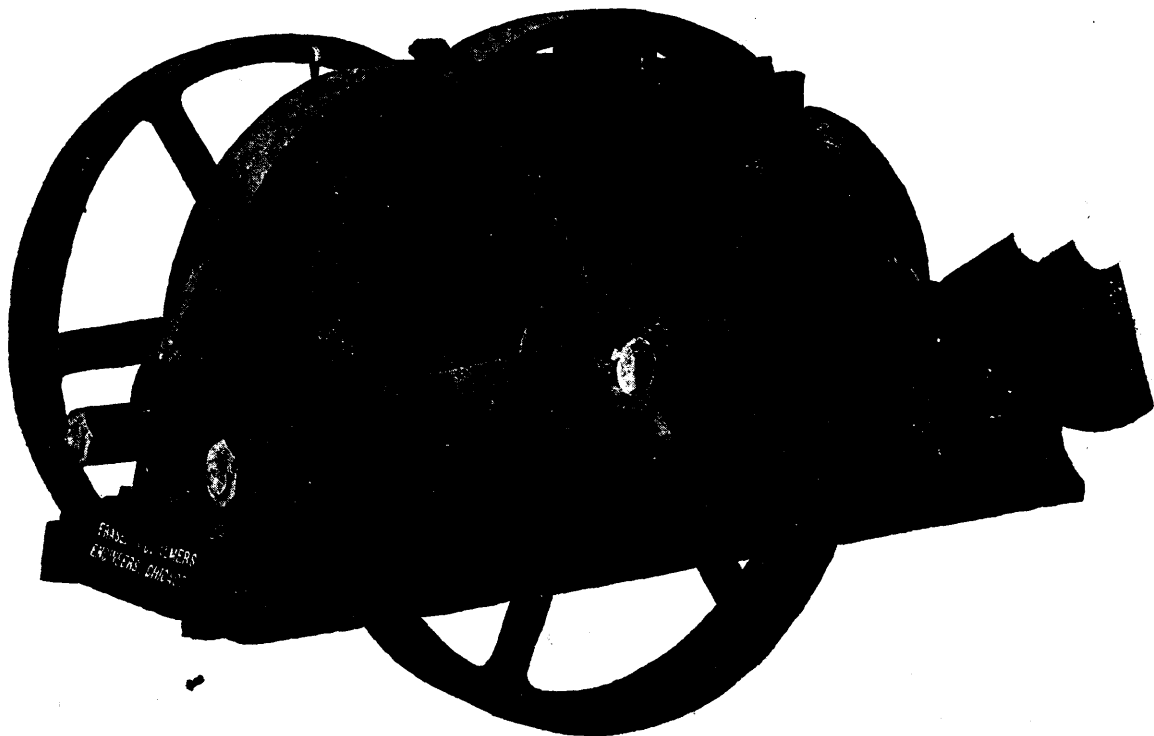
oooooooooooo

ROBB ENGINEERING COMPANY, Limited
AMHERST, N.S.

FRASER & CHALMERS

CHICAGO, ILL., U. S. A.
AND LONDON, ENGLAND.

Mining Machinery,
Stamp Mills,
Smelters,
Rock Crushers,
Riedler Pumps
and
Air Compressors



Hoisting Engines,
Frue Vanners,
Sederbohm, Adams and Wood Boilers,
Corliss Engines,
Concentrating Machinery.

FRASER & CHALMERS

have the best manufacturing facilities for making anything in the Perforated Metal line, Placer Grizzlies with Taper Holes, Stamp Mill Screens, Trommels, Coal Screens, &c. Screen Samples on Request.