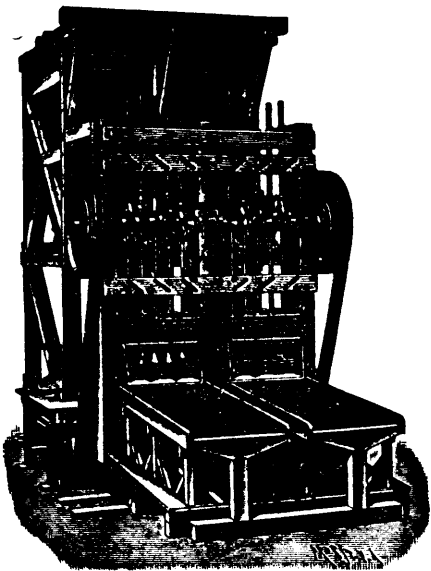


FRIED. KRUPP AKTIENGESELLSCHAFT GRUSONWERK

Magdeburg-Buckau (Germany)

MINING MACHINERY



ORE CRUSHING:

Stone Breakers of specially strong construction, Roller Mills, Chilian Mills.

BALL MILLS

for dry and wet crushing, more than 1,800 at work.

STAMP BATTERIES

Shoes and Dies of Krupp's Special Steel.

AMALGAMATION:

Amalgamation Tables and Pans, Larslo's Gold Amalgamators, Settlers, etc.

SEPARATION and CONCENTRATION:

Separators, Exhaustors, Hydraulic Classifiers, Percussion Tables, Jiggers, Rotating Round Tables.

LEACHING PLANT.

Complete Gold Ore Dressing Plant

- a. For treating by the Wet Method with Stamp Batteries, Amalgamation and Concentration.
- b. For Dry Crushing by Ball Mills Dust Extraction, and Leaching.

COAL WASHING PLANT

Large Testing Station for Crushing and Dressing Ores at the Works.

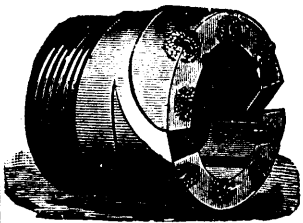
Agents:

For Canada: JAS. W. PYKE & Co., Merchants Bank Building, MONTREAL.

For the United States: THOS. PROSSER & SON, 15 Gold Street, NEW YORK.

For Mexico: PABLO BERGNER, Apartado 549, MEXICO.

For South Africa: UNITED ENGINEERING CO., Ltd., P.O. Box 1082, JOHANNESBURG, S.A.R.



BERNARD BANDLER

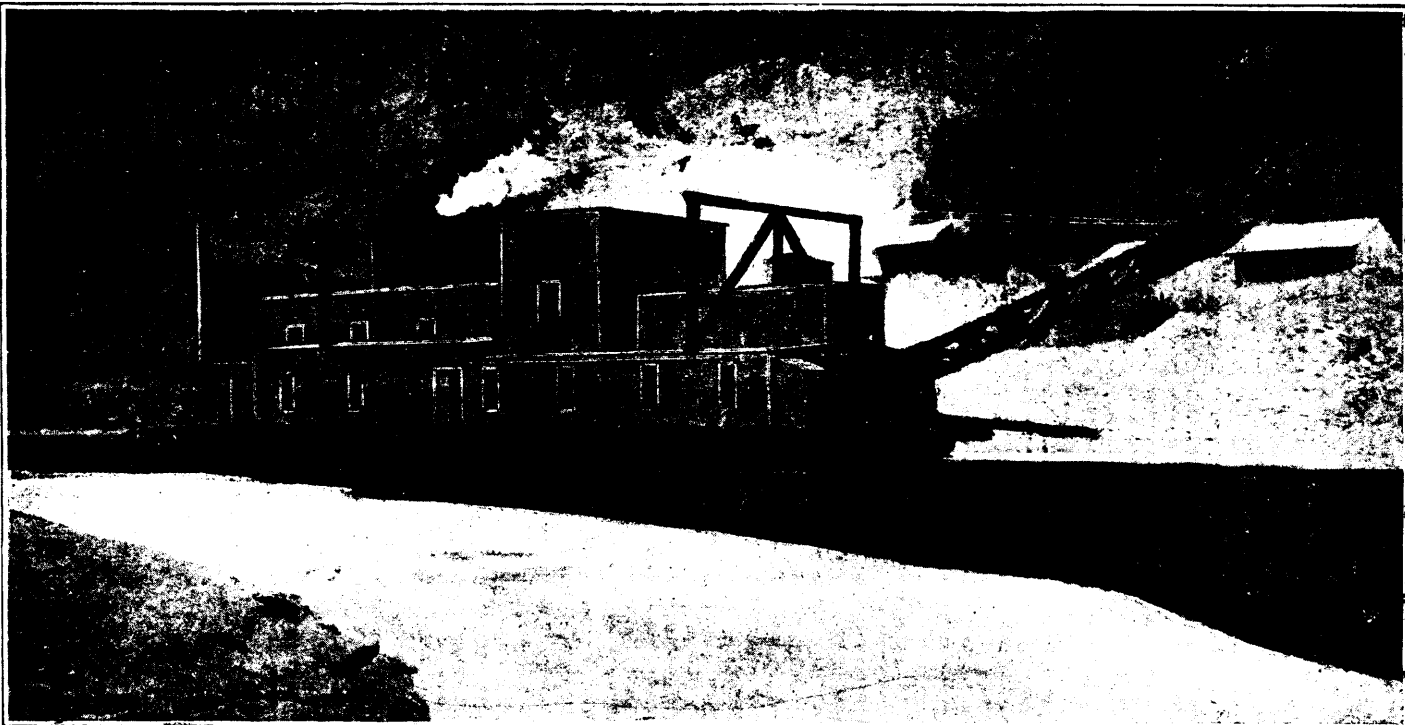
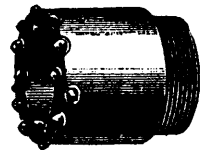
IMPORTER OF

CARBONS AND BORTS

For Diamond Drills and all Mechanical Purposes

65 Nassau Street, NEW YORK, N.Y.

GOODS SENT SUBJECT TO APPROVAL



BLISS No. 1 GOLD DREDGE

Built by

Working on the Fraser River, B.C.

The Wm. Hamilton Mfg. Co. Limited

Branch Office: VANCOUVER, B.C.

PETERBOROUGH, Ont.