

With coal at famine prices a Range that reduces the coal bill is the Range to buy

Such a range the Monarch has proved itself to be.

It is designed for economical burning and built for durability.

Your neighbor will tell you how much this saves her in a year.

Try as you will you cannot keep down the coal bill with an inferior range.

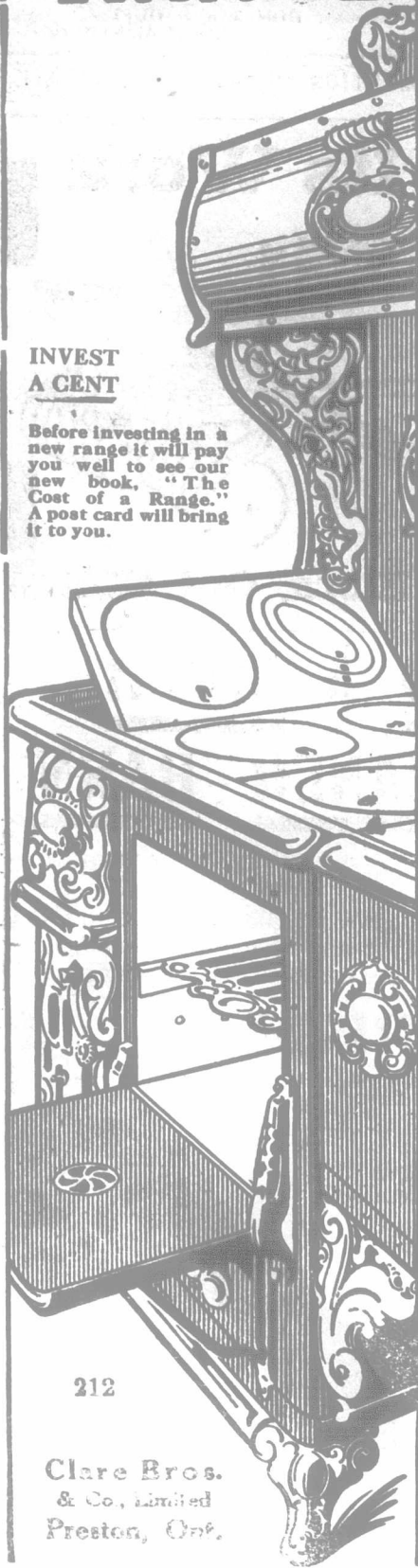
# MONARCH

PENINSULAR

# RANGE

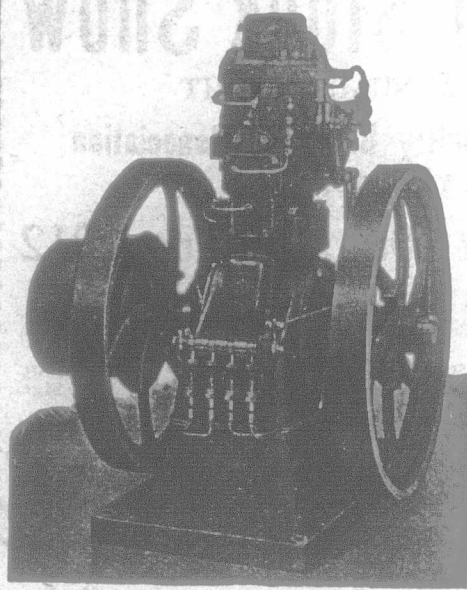
## INVEST A CENT

Before investing in a new range it will pay you well to see our new book, "The Cost of a Range." A post card will bring it to you.



212

Clare Bros.  
& Co., Limited  
Preston, Ont.



## The Farmers' Power Plant

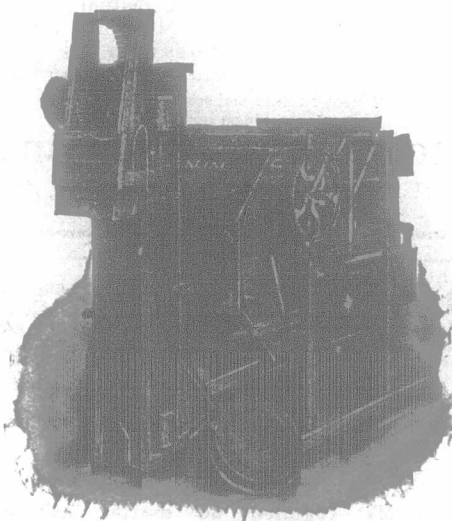
BOLINDERS SEMI - DIESEL  
CRUDE OIL ENGINE

This handy little tool will save you hundreds of dollars. Not alone in replacing labour but in upkeep and running cost as compared with Gasoline engines. A 12 H.-P. Gasoline Engine costs you 30 cents to operate per hour. Our Crude Oil Engine only costs 6 cents per hour. Our engines are designed and built to stand hard work. They will outlive three or four gasoline engines. There is absolutely no risk from fire or explosion as it uses non-inflammable crude oil.

THE CANADIAN BOVING CO., LIMITED  
164 Bay Street TORONTO, ONTARIO

## A Great Record

"Kline" Fanning Mills have earned a great reputation among Canadian farmers. Lately we have run across "Kline" Mills that have been in use from 20 to 35 years and are still giving efficient service. It's really surprising what lasting satisfaction these machines will give and how much money they will save for farmers even in a year.



## "Kline" Fanning Mills

are built on correct principles and have several features not found on other fanning mills. They are suited for either hand or power. The prices and terms are such that you will be eager to own a "Kline."

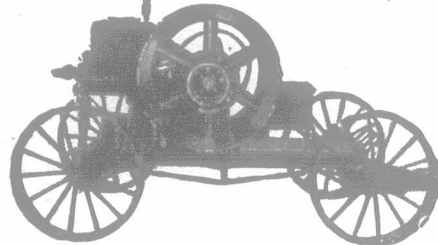
Further particulars will be supplied as soon as we learn your name and address. Agents wanted in unrepresented territory.

Kline Manufacturing Co., Ltd.  
BEETON, ONTARIO.

## FOR YOUR FARM, YOUR HOME, YOUR FACTORY

FOR EVERY POWER PURPOSE

A Gilson "Goes-Like-Sixty" Engine with New Features and Latest Improvements.



MORE VALUE  
MORE POWER  
MORE SERVICE  
MORE SATISFACTION

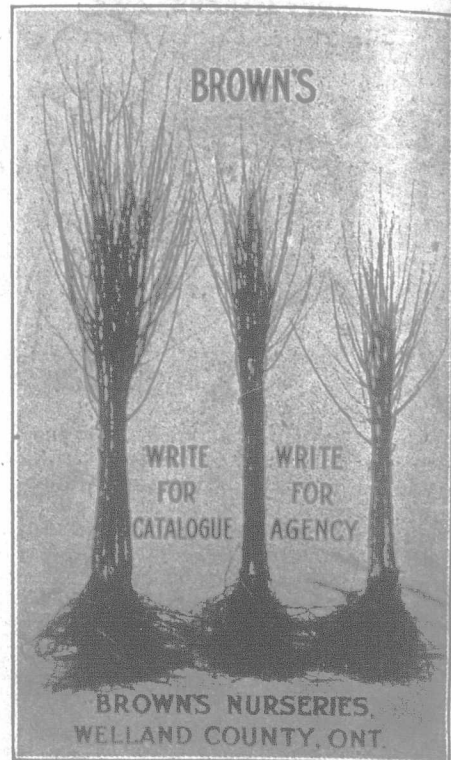
Does satisfaction mean anything to you? Does money saved in fuel, in time, in repairs and expense bills appeal to you? Get Gilson Facts, and find out how the Gilson 60-SPEED engine does the greatest variety of work—how it gives the maximum satisfaction—saves money in equipment, and yields 100% service at lowest cost. Every engine covered by a cast-iron guarantee. The New Gilson 5, 6 and 8 h.-p. engines, equipped with our new friction clutch pulley, with five removable rims, each of a different diameter. Change to the proper speed for any job in five minutes. A NEW and EXCLUSIVE GILSON FEATURE. We also make 60-SPEED engines in 1 1/4 and 3 h.-p. sizes. These are mounted on truck, with line shaft and five interchangeable pulleys, and pump-jack. Drop us a card to-day, and we will send you full descriptive literature. We are making special prices to the first purchaser of one of these engines in every locality. Write NOW. Agents wanted.

GILSON MFG. CO., LTD., 120 York St., GUELPH, ONT.



## HOW TO GET BETTER LIGHT From COAL OIL (Kerosene)

Tests by Prof. McKergow, McGill University, Montreal, on leading oil-burning lamps show the Aladdin Mantle Lamp is the most economical and gives over twice as much light as the Rayo and other lamps tested. It is odorless, safe, clean, noiseless. Guaranteed. Better light than gas or electric. To introduce the Aladdin we'll send a sample lamp on Experience, up to 10 Days Trial home across this lamp. One agent sold over 1000 in 10 days. Ask for Particulars money back guarantee, not one returned. Another sold \$250 worth in 10 days. Events made profitable. Ask for agents and trial offer. RAYO LAMP COMPANY 223 Aladdin Bldg. Montreal and Winnipeg, Can.



## Good Schools!

The best business colleges in Ontario are

Central Business College,  
STRATFORD,

AND

Elliott Business College,  
TORONTO.

All our instructors are experienced. The courses are up-to-date, and we do more for our graduates than do other similar schools. You may enter at any time. Write either college for a free catalogue.

## DE LAVAL CREAM SEPARATORS

USED EXCLUSIVELY BY  
98% OF THE WORLD'S  
CREAMERIES

The only separator that is good enough for the creameryman is equally the best cream separator for the farmer to buy.

DE LAVAL DAIRY SUPPLY CO., Limited  
Montreal Winnipeg

## PROFITS

Some of the profits of the Farm cannot be better invested than in a short-term

## Life or Endowment Policy

The Federal Life Assurance Co. issues most desirable forms of contract.

Consult any agent of the Company or write to the Home Office at Hamilton.

The Federal Life Assurance Co.  
HAMILTON ONTARIO



## Brilliant Light ON YOUR TABLE

Five times more powerful than largest circular coal oil lamp, this clear soft white light makes reading a pleasure.

Cheaper than coal oil. Costs less than 1/4c. per hour. Always ready. Generates itself. Burns its own gas with mantle same as city gas. No chimney. No odor.

Beautiful ornament to any table. Art dome of rich amber glass with 2 1/2 inch beaded fringe. Write to-day for descriptive circular and card. A showing lamp in natural colors.

RICE-KNIGHT Ltd.

Toronto or Regina