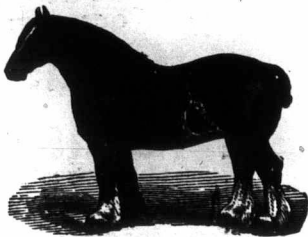


Clydesdales for Sale.



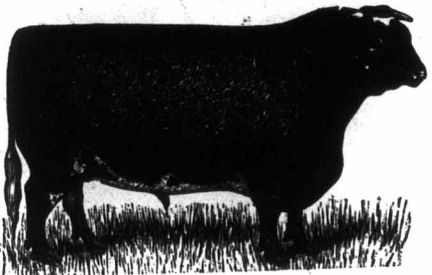
1 Three-year-old stallion by imp. Queen's Own, out of imp. Candour, by Macgregor.
1 Three-year-old (imp.) stallion by Prince of Millfield, out of Connie Nairn, by Prince of Wales.
1 Four-year-old stallion by King's Own, out of imp. Candour, by Macgregor.
3 Imp. two-year-old stallions by Macgregor.
2 Two-year-old stallions by Prince of Quality, out of imported dams.
Also several two-year-old fillies.
These animals are all large size, good quality and sound.
Terms reasonable.

ROBERT DAVIES,

Thorncliffe Stock Farm, TORONTO, ONT.

Arthur Johnston,

Greenwood P. O. and Telegraph Office,



— OFFERS FOR SALE —

FIFTEEN SPLENDID YOUNG BULLS.

— ALSO —

Cows and Heifers,

As good as the old bull ever left.

Berkshires

OF CHOICEST BREEDING AND QUALITY FOR SALE

Send for Catalogue and prices. "No business, no harm," is our motto. Claremont C. P. R., or Pickering G. T. R.

Spring Grove Stock Farm



Shorthorn Cattle and Lincoln Sheep. The noted sires, Golden Robe = 20396 = and Nominee = 19628 =, at the head of the herd. Representatives of this herd won two silver medals and the herd prize at Industrial Fair, Toronto, 1897. Prize-winning Lincoln Sheep are also bred at Spring Grove. Stock of all ages and both sexes for sale. Apply to T. E. ROBSON, Iderton, Ont.

Shorthorns and Leicesters

Nominee, sweepstakes bull at Toronto, 1897, bred by us. We also won first prize on pen Leicesters bred and owned by exhibitor. We continue to breed the best.

YOUNG STOCK FOR SALE.

E. Gaunt & Sons, ST. HELEN'S, ONT.
Lucknow Station, G. T. R., 3 miles. om

FOR SALE! Good Young Cows

two years old, yearlings and heifer calves out of imported and home-bred cows, and the imported bulls, Royal Member and Rantin Robin. Come and see them, or write, if you want something special.

H. CARGILL & SON,

Station on the farm. Cargill Sta. & P.O., Ont.

W. G. Pettit & Son, FREEMAN, ONTARIO.

Telegraph office, Burlington Station, G. T. R.

BREEDERS Shorthorns, Shropshires, and Berkshires

Ten choice young bulls from 9 to 12 months, extra good quality, got by "Indian Statesman." A choice lot of yearling ewes (served by an imp. ram), due to lamb in March and April. Also eight young sows, due to farrow in March, and a few boars from four to six months old.
Farms one-half mile and one and one-half from Burlington Station, G. T. R.

SHORTHORNS

Bulls and heifers, having gilt-edge pedigrees, and of superior quality.

C. A. BRODIE,

Bethesda P. O., Ont.

ADVERTISE IN THE ADVOCATE

BARGAINS
— IN —
FARM LANDS

Notwithstanding the demand for farm lands, particularly in the eastern half of the Province, and the consequent advance in prices, I have resolved to offer the land in the annexed list at the old reduced figures, and in some instances at prices lower than they have yet been offered at. I desire to sell quickly and cheaply, and on terms that will suit anyone, namely, one-tenth cash, balance in nine equal annual payments, interest at six per cent. Where preferred I shall also sell on the crop payment plan.
Write me, or call when in the city.

WILLIAM HARVEY,

210 Portage Avenue (Cor. Main Street), WINNIPEG.

If you do not want a farm, kindly hand this list to one who does.

ST. ANNE'S, PLYMPTON, AND LORETTE DISTRICTS.

	ACRES.	PRICE.
1—S E 1/4 18, 10, 6 E.....	80 acres under cultivation, house and stable, near Plympton.....	160 \$1,000
2—S W 1/4 24, 7, 7 E.....	Log buildings and large cultivation, near Giroux P.O.....	160 500
3—Lot 5, Lorette.....	Improved farm, cheap; superior buildings, four miles east of Lorette.....	177 1,300
4—Lots 20 and 21, Lorette.....	Inner and outer two miles, comfortable buildings and large cultivation at Lorette.....	352 2,000
5—Lot 66, St. Anne's.....	House and large cultivation, close to Village of St. Anne's.....	200 900
6—S W 1/4 27, 7, 7 E.....	Unimproved, on the Seine River, near Giroux.....	160 700
7—Lot 42, Lorette.....	Partly improved, valuable farm, near Lorette.....	200 800
8—N W 1/4 13, and S 1/4 of N E 1/4 14, 10, 4 E.....	Partly improved, ten miles east of Winnipeg.....	240 1,100

STONEWALL AND BALMORAL DISTRICTS.

9—N W 1/4 23, 14, 1 W.....	Unimproved, fine dry prairie, near Argyle P.O.	160 800
10—N 1/4 30, 14, 1 W.....	Excellent buildings and large cultivation, at Oswald P.O.....	320 1,200
11—N E 1/4 23, 14, 1 W.....	Concrete house and partly improved, near Oswald P.O.....	160 350
12—S W 1/4 36, 15, 2 E.....	Comfortable buildings, twelve acres cultivated, north-west of Balmoral.....	160 500
13—S W 1/4 32, 15, 2 E.....	Comfortable buildings, 12 acres cultivated, four miles north of Balmoral.....	160 500
14—S E 1/4 6, 16, 2 E.....	Unimproved, good wheat land, five miles north of Balmoral.....	160 600
15—N E 1/4 and N 1/4 of S E 1/4 of 16, 15, 4 E.....	Unimproved, good wheat land, ten miles north-west of Selkirk, near Candeboye P.O.....	240 1,000
16—N W 1/4 and W 1/4 of N E 1/4 34, 12, 2 E.....	Unimproved, good wheat land, close to Stony Mountain..... (Offers invited)	240
17—S W 1/4 and N 1/4 of S E 1/4 35, 12, 2 E.....	Unimproved, good wheat land, close to Stony Mountain..... (Offers invited)	240
18—Southernly 140 acres of S E 1/4 12, 16, 1 E.....	Improved, north of Balmoral in good locality.....	140 350

HEADINGLY, OAKVILLE, AND HIGH BLUFF.

19—Lot 211, St. Francois Xavier.....	Improved, good location.....	203 800
20—Lots 47 & 48, Headingly.....	Buildings and largely cultivated, farm is next to Village of Headingly.....	180 2,000
21—S W 1/4 10 and N 1/4 of N W 1/4 3, 11, 5 W.....	Wild land, 2 1/2 miles from Oakville, cheap.....	240 700
22—N W 1/4 and W 1/4 of N E 1/4 23, 9, 1 W.....	Wild land, level prairie, 6 miles east Starbuck.....	240 600
23—W 1/4 26, 11, 3 W.....	Unimproved, fine prairie, close to St. Eustache.....	320 1,300
24—N E 1/4 and E 1/4 of N W 1/4 9, 2 E.....	Unimproved, fine prairie, near LaSalle Stn.....	235 800

PORTAGE LA PRAIRIE AND MARQUETTE.

25—S E 1/4 7, 11, 7 W.....	No improvements, considerable timber, nine miles south-west of Portage la Prairie.....	160 500
26—N 1/4 and S E 1/4 2, 13, 3 W.....	One mile west of Marquette, fine hay land.....	480 1,000

RED RIVER LOTS.

27—Lot 4, St. Andrews.....	Ten miles north of Winnipeg, a bargain.....	188 1,100
28—Lot 29, St. Andrews.....	Outer two miles only, unimproved.....	44 250
29—Lots 72, 73, 74, St. Norbert.....	At St. Norbert village, ten miles south of Winnipeg. (Will sell these lots singly or collectively, a bargain.).....	865 7,500
30—Lot 14, St. Norbert.....	At Glenora P.O., 15 miles south of Winnipeg, a well improved with buildings.....	154 2,000
31—Lot 613, St. Agathe.....	Sixteen miles south of Winnipeg, improved, with buildings.....	155 1,600
32—Lot 559, St. Agathe.....	At Village of St. Agathe, unimproved, a farm and location.....	160 1,300
33—Lot 232, St. Agathe.....	Will sell separately or in block, a bargain.....	160 900
34—Lot 234, St. Agathe.....	Will sell separately or in block, a bargain.....	160 900
35—Lot 236, St. Agathe.....	Opposite St. Agathe village, wild land.....	240 1,800
36—Lot 532, St. Agathe.....	110 acres broken, nice farm, good buildings, 4 miles south of Morris on east side.....	240 1,800
37—Lots 290, 292, St. Agathe.....	About 4 1/2 miles south of St. Jean, on east side of river, improved, good buildings.....	107 1,000
38—Lot 180, St. Agathe.....	About 3 1/2 miles south of St. Jean, on east side of river, improved.....	131 600
39—Lot 202, St. Agathe.....	Part of the village of St. Jean, valuable property, improved.....	123 2,200
40—Lot 233, St. Agathe.....		

LETELLIER AND ROSENFELD DISTRICTS.

41—S E 1/4 32, 2, 1 E.....	Improved, buildings and cultivation.....	160 1,400
42—S E 1/4 30, 2, 1 E.....	Unimproved, good stock farm.....	160 1,100
43—S W 1/4 34, 2, 1 W.....	Improved, buildings, cultivation and fencing.....	160 1,000

MORDEN DISTRICT.

44—S W 1/4 36, 1, 6 W.....	Unimproved, south of Morden.....	160 500
45—N E 1/4 24, 1, 6 W.....	Improved, south of Morden.....	160 600
46—N E 1/4 1 and S E 1/4 12, 4, 6 W.....	Highly improved, buildings, fencing and cultivation, a beautiful farm, eighty acres just broken, 225 acres in all under cultivation, one mile from Nelson.....	320 4,000

DOMINION CITY AND ST. MALO.

47—S E 1/4 35 and N E 1/4 26, 1, 4 E.....	Excellent half-section, improved by cultivation, near Ridgville P.O.....	320 1,500
48—E 1/4 36, 1, 4 E.....	Good stock farm, hay abundant.....	320 800
49—N E 1/4 6, 1, 5 E.....	Log buildings and cultivation, 12 miles east of Emerson.....	160 600
50—S E 1/4 28, 1, 5 E.....	No improvements near Ridgville P.O.....	160 400
51—N W 1/4 28, 1, 5 E.....	No improvements near Greenridge P.O.....	160 400
52—S E 1/4 28, 2, 5 E.....	No improvements near Greenridge P.O.....	160 400
53—N W 1/4 and N 1/4 of S W 1/4 18, 4, 5 E.....	Wild land.....	240 500
54—S W 1/4 and S 1/4 of N W 1/4 30, 4, 5 E.....	Wild land.....	240 500
55—S W 1/4 10 and E 1/4 of S E 1/4 9, 5, 3 E.....	Wild land.....	240 500
56—E 1/4 36, 2, 4 E and W 1/2 120 acres of S W 1/4 31, 2, 5 E.....	Improved, large cultivation, close to Greenridge P.O.....	440 2,000

(CONTINUED ON NEXT PAGE.)

OAK PARK STOCK FARM'S SHORTHORN HERD

Your choice from 50 head, including cows and heifers having the most approved pedigrees. Half a dozen young bulls equally well bred. Registered Shropshire sheep and Berkshire swine.

CAPT. D. MILLOY,

Paris, Brant Co., Ont.

Shorthorn Cattle for Sale

FOUR first-class young bulls, two of them by our well-known Cruickshank bull, Abbottsford 1946, and half a dozen heifers also by Abbottsford, the sire of the champion steer Bruce.

H. SMITH,

Exeter, G. T. R., 1/2 mile.

HAY P. O.

Shore Bros., WHITE OAK, ONT.

Offering young Shorthorn bulls of the low, easy-feeding sort which the present trade demands. Could also spare a few heifers.

WE HAVE Shorthorn Bulls FOR SALE.

One ten months old, got by (imp.) Royal George, dam by (imp.) Warfare; the other, four years old, by (imp.) Warfare, dam (imp.) Charlotte; sure and kind; both red. Write for prices or come and see.

A. & D. BROWN, Iona, Ont.

Hawthorn Herd of Deep-Milking Shorthorns

For Sale! FOUR young bulls and several heifers of the choicest breeding and good quality. Prices right.

WM. GRAINGER & SON, London, Ont.

JOHN SRIGLEY, Allandale, Ont.

Breeder of Shorthorns and Herefords, Shropshire sheep, Berkshire and Yorkshire pigs. A choice bunch of Shropshires, also a few Shorthorn and Hereford females now for sale.

MILLER & SIBLEY'S

Jerseys

BIG COWS HEAVY MILKERS

RICH PEDIGREES

SOUND COWS GREAT BUTTERMAKERS

FULL FOREUDERS

LARGE, WELL-PLACED TEATS.

Championship yearly milk record in Jersey breed for two-year-olds, as well as mature cows, held by this herd.

187 First Prize and Sweepstakes won by this herd at 18 State or greater fairs. First prize herd in 1897 wherever shown, viz.: at New York State Fair, Victorian Era Exposition, Toronto; Western Fair, London, Canada; Central Canada Exposition, Ottawa. In previous years, first prize herd at New York, Pennsylvania, Ohio, West Virginia, Indiana, Illinois, and Missouri State Fairs, and Cotton States Exposition and Live Stock Show of America, etc.

Every animal over one year old has been tuberculin tested. Our animals are not cheap. They are worth what we ask for them. In general, no bull, heifer or cow for less than \$300. If you want our kind of Jerseys, come and see our herd. If you can't come, write for what you want. No trades. No Catalogue.

MILLER & SIBLEY,

FRANKLIN,

Special literature sent if this paper is mentioned.

Venango Co., Pa.

ONE FIRST PRIZE BULL

A. J. C. O.

Sire King of Highfield, winner of 1st prize over all Canada; dam St. Lambert's Kathleen, made 21 lbs. 34 ozs. of butter in 7 days; dam of King of Highfield, Signal Rosa May (22 lbs. 4 ozs. of butter in 7 days, and 1st prize over all Canada 4 times), also dam of Unoma May (26 lbs. 4 ozs. of butter in 7 days, and 64 lbs. of milk a day).

J. H. SMITH & SON, Highfield, Ont.

5 JERSEY BULLS 5

AND A NUMBER OF

BERKSHIRE

BOARS

For Sale at Low Prices.

THE BOW PARK CO., LIMITED,

BRANTFORD, ONT.

BRAMPTON JERSEY HERD

Offering high-class A. J. C. O. cows and heifers in calf, and heifer calves; 9 choice young bulls. High-grade cows in calf; and Berkshires.

B. H. BULL & SON, Brampton

