

## MUNICIPAL ENGINEERS, CONTRACTORS AND MATERIALS

**WILLIS CHIPMAN**

Hon. Grad. McGill University.  
M. Can. Soc. C.E. M. Am. Soc. C.E.  
Mem. Am. W.W. Assn.

**WATERWORKS, SEWERAGE WORKS, GAS  
WORKS, ELECTRIC LIGHT AND  
POWER PLANTS**  
Reports, Surveys, Construction, Valuations  
**103 BAY STREET - TORONTO**

**R. E. SPEAKMAN, C.E.**

A. M. Inst. C. E., 1878.

**CONSULTING ENGINEER**

Waterworks, Sewerage and Sewage Disposal.  
Municipal Improvements.  
Granolithic Pavements.  
Electric Light Plants.  
Drainage and Irrigation of Land.  
Coal Handling Plant and Machinery.  
Plans, Specifications and Estimates.  
Construction and Valuations.

Canada Life Building - TORONTO

**Roderick J. Parke**

Am. Can. Soc. C.E., A.M. Amer. Inst. R.E.

**CONSULTING ENGINEER**

Hydraulic Power Development. Long Distance  
Power Transmission. Steam Plants, Electric  
Lighting and Power Systems. Tests  
Valuations. Reports.

2-51 James Building, Cor-  
King and Yonge Streets TORONTO, CANADA

Telephones (Office)—Long Distance Main 3047  
(Residence)—Long Distance North 2204  
Telegraphic address: "Rospark."  
W. U. Code, Univ. Edition.

**WILLIAM H. BREITHAUP, C.E.**

M. AM. SOC. C.E., M. CAN. SOC. C.E.

**CONSULTING STRUCTURAL ENGINEER**

Foundations, Bridges, Buildings.  
BERLIN, ONT.

**ROSS & HOLGATE****Consulting and  
Supervising Engineers**

Waterworks, Electric Light and Power  
Plants, Structural Work, Reports,  
Estimates, Arbitrations.

37 ST. JOHN ST. - MONTREAL  
McKINNON BLDG. - TORONTO

**Percival W. St. George**

Mem. Inst. C. E. London, England.  
Mem. Can. Soc. C. E.

**CONSULTING ENGINEER**

Railway, Sewerage, Water, Hydraulic,  
Expert and Arbitrations, &c.

BELL TELEPHONE BLDG. MONTREAL  
Telephone, Main 4717.

**JAMES C. KENNEDY**

MEM. CAN. SOC. C.E.

**CIVIL AND HYDRAULIC ENGINEER**

Examinations, Reports, Plans, Estimates  
Supervision of Construction, Water  
Powers, Water Works, Sewerage, etc.

P. O. Box 710, Owen Sound, Ont., and  
877 Dorchester Street, Montreal, Que.

**GEO. L. GRIFFITH, C.E.**

Mem. Dom. Inst. Amal. Eng.; Mem. Can.  
Min. Inst.

**Municipal Engineering in General.**

Waterworks, Sewerage and Sewage  
Disposal, Street Railways, Concrete  
Pavements, Concrete Steel Bridges,  
Drainage and Irrigation, Water Power  
Development, Reports, Plans, Specifi-  
cations, Estimates, Construction.

General Instrumental Surveys undertaken for  
Public Works of every description.  
Bank of Hamilton Chambers, Winnipeg, Man.

**THE PHOENIX BRIDGE & IRON WORKS,  
— MONTREAL****GENERAL STEEL CONTRACTORS**

Large Stock I BEAMS, CHANNELS, ANGLES, TEES, ZEES and  
PLATES always on hand.

**THE CANADIAN SEWER PIPE CO.**

MANUFACTURERS OF



FOR

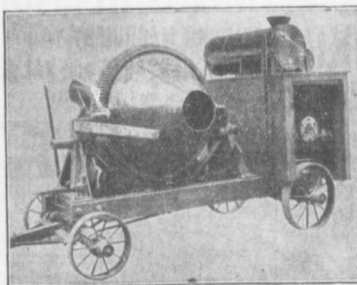
**Sewers, Culverts and Water Pipes  
Inverts for Brick Sewers**

WRITE FOR DISCOUNTS

ST. JOHNS, P. Q.

HAMILTON, ONT.

TORONTO, ONT



No. 1 Smith Mixer on Trucks With Gasoline Engine.

**SMITH MIXERS**

Are Unexcelled for Rapid and Thorough Mixing.  
They are the Simplest and Strongest in Con-  
struction. Capacities up to 350 Cubic Yards  
per Day.

**W.H.C. MUSSEN & CO.,** 763-765 Craig St.  
MONTREAL.

18  
Different  
Sizes  
and  
Styles.

Mounted  
on  
Skids  
or  
Trucks.

With  
or  
Without  
Power  
Attached

**CANADIAN  
CONTRACTOR'S  
HAND-BOOK**

and  
Estimator

Third Edition

Price \$1.50; to  
subscribers of  
the Canadian  
Architect and  
Builder, \$1.00.

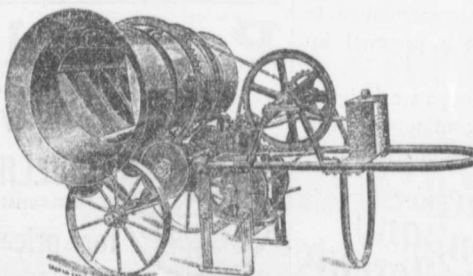
SEND FOR A COPY

C. H. Mortimer  
Publishing Co.  
Toronto.

Please mention THE CONTRACT RECORD when corresponding with advertisers.

**THE McKELVEY CONCRETE MIXERS**

MANUFACTURED BY **W. A. McKELVEY,** McKinnon Building,  
TORONTO.



These machines  
are made to mix  
either continu-  
ously or in  
batches, and can  
be operated  
either by Hand,  
Steam or Gaso-  
line Power.