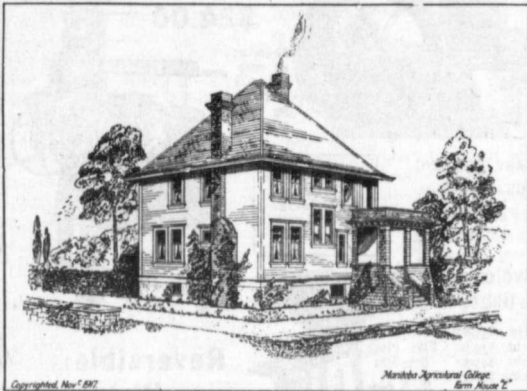


Modern House Plan

By Professor L. J. SMITH, Dept. of Agricultural Engineering, Manitoba Agricultural College, Winnipeg. Plan "E"



Copyrighted Nov. 1917

Manitoba Agricultural College Farm House "E"

This is the last of the prize plans from the women's farm home competition. It was submitted by Miss Christina Guild, of Kemnay, Manitoba. This plan comes the nearest of the prize plans to meeting the average requirements as to size, according to an average of the plans submitted in the competition, it being 30 ft. by 32 ft.

It is quite different from the other plans shown, Fig. 00 having a corner porch from which one can look out in three directions, and a front hall or reception room with an attractive front stairs. If so desired a coat closet could be had at "C1."

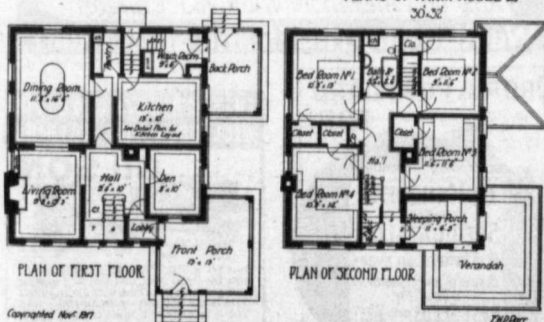
Many wish a small room on the first floor, apart from the others, and yet easily accessible. The den or study will meet such a requirement. Some might prefer to combine the hall space with that of the den, and have a large common room with a fireplace; but the hall, with its large archway

tilation in warm weather. The pantry is located conveniently between the kitchen and dining-room. In the corner is a clothes chute leading down from the bathroom. The chute does not detract from the pantry, since the space that it occupies would be hard to utilize, being in the corner between shelves on the left and the little table-cupboard under the window at the right. Many would put a slide in the partition between the pantry and the dining-room.

The back stairs lead up from the wash room to a little landing, which opens on the hired men's bedroom (No. 2) or into the hall near the bathroom. There is a small window at the turn of the stair (not shown in the plan) to give plenty of light.

There are three good sized, well lighted and ventilated bedrooms besides the men's room. Each has a large closet. There is also a good linen closet conveniently

MANITOBA AGRICULTURAL COLLEGE
PLANS OF FARM HOUSE "E"



Copyrighted Nov. 1917

THURBER

between, is really a part of the living room.

The kitchen has but one outside wall; but with the arrangement of doors, there should be no difficulty in securing ample ven-

located off the upper hall. The attic stairs lead to a nice attic bedroom with good closets.

Many will appreciate the little sleeping porch. From it one can step out on the upper verandah,

East, West, North, South

WHEREVER the hum of the threshing machine is heard, there the GARDEN CITY FEEDER HAS BEEN DOING ITS BIT towards the success of the ALLIES, by eliminating the troubles of threshermen and CONSERVING the grain of the growers.

A SMALL machine, but a GIANT in usefulness and ability to lighten the burden of the farmer, as is proved by the universal satisfaction which it gives, and the ever increasing and insistent demand by the grain growers; that the machine which does their threshing MUST be equipped with a GARDEN CITY FEEDER.

WE THANK THE FARMERS OF CANADA for the patronage bestowed upon us and shall continue to do our utmost to give you the BEST POSSIBLE SERVICE and VALUE IN FULL for every dollar expended for our machine.

Wishing you a HAPPY AND PROSPEROUS NEW YEAR, we are respectfully yours,

The Garden City Feeder Co., Ltd. REGINA SASK.

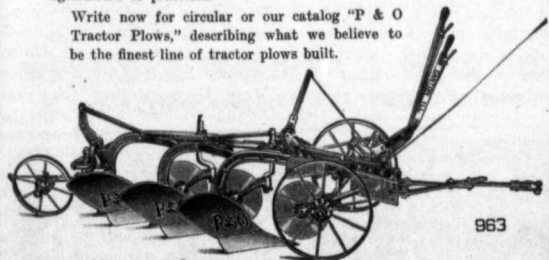
BRANCHES:
Bruce Davison Co. Brandon, Man. Mart McMahon Lethbridge, Alta. W. S. Munroe Co. Calgary, Alta.



The P & O Little Genius Is the Ideal Plow for Your Light Tractor

Its field record proves it. For three years it has gone out under all conditions and has unflinchingly made good. It is helping to solve the labor problem by enabling one man to accomplish as much as formerly had been accomplished by two, three or four men. Its all round efficiency and the ease with which the tractor operator handles both plow and tractor have made it a favorite with tractor plowmen everywhere. In foreign fields, far from home and factory experts, it is the favorite plow because of its ability to stand up under hard work, without attention. There is no more rigid test to which a plow can be put. Though but three years old, the P. & O. Little Genius has gone into nearly every country where agriculture is practised.

Write now for circular or our catalog "P & O Tractor Plows," describing what we believe to be the finest line of tractor plows built.



963

Made by Parlin & Orendorff Co., Canton, Ill., U.S.A.
International Harvester Co. of Canada, Limited
Sales Agents for Canada

Winnipeg Brandon Regina Saskatoon North Battleford Yorkton
Estevan Calgary Edmonton Lethbridge