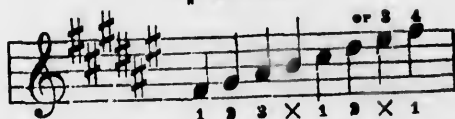


The key of $F\sharp$ is an exception to the rule; it is fingered in the following manner.

$F\sharp$ MAJOR.

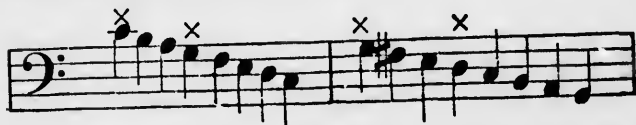


Q. What is the fingering of the keys with flats at the signature?

A. In the major keys of F , $B\flat$, $E\flat$, $A\flat$, and $D\flat$, the thumb of the right hand must be placed on C and F in ascending and descending.

Q. How are scales fingered with the left hand?

A. In keys with sharps, the thumb must be placed on the first and fifth degrees in descending and ascending, in major and minor.



The keys of B and $F\sharp$ form exceptions to this rule; the thumb is placed on the fourth note in ascending, or fifth note in descending.

B MAJOR.

$F\sharp$ MAJOR.

