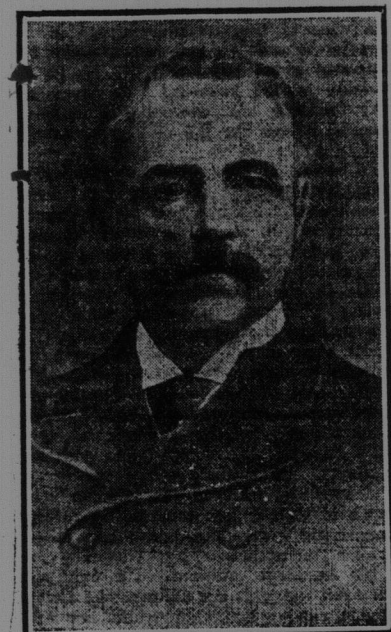


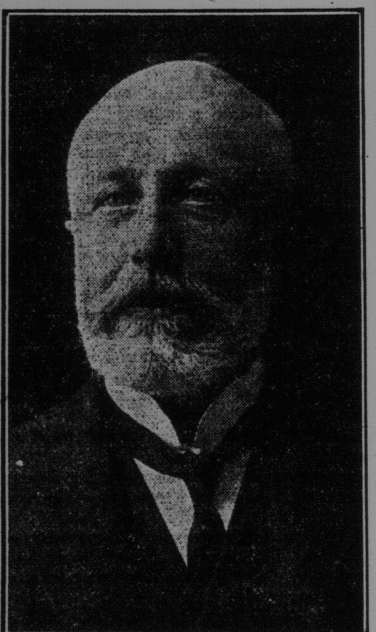
COSTIGAN AND GILMOR LAND SENATORIAL PLUMS

Appointed at Saturday's Cabinet Meeting to Fill
New Brunswick Vacancies

Hon. George W. Ross and Robert Beith Chosen for Ontario
None Made for Nova Scotia, But A. H. Comeau is
About Sure of Appointment—Great Tracts of Land Re-
leased for Settlement in New Provinces.



Senator John Costigan.



Senator Daniel Gilmor.

Ottawa, Jan. 15.—Four new senators were appointed at Saturday's cabinet meeting. The two Ontario vacancies were filled by the appointment of Hon. Geo. W. Ross, ex-speaker of the province, and Robert Beith, who represented West Durham in the house of commons for the greater part of three terms. He succeeded the Hon. Edward Blake in the representation of the constituency in 1891.

The two New Brunswick senatorships went to Hon. John Costigan and Daniel Gilmor. The latter was a candidate for parliament in Charlotte county at the last general election and was defeated. He is a son of the late A. H. Gilmor, who for five years from 1874 represented Charlotte in the house of commons and was afterwards appointed to the senate.

There are two vacancies in the senate from Nova Scotia. They have not yet been filled. It is said that one of the positions will go to Hon. A. H. Comeau, a member of the Murray government without portfolio.

Big Areas of Land Released.

The bill presented to parliament by the minister of the interior for the consolidation of the Dominion Lands Act, contains a provision that will meet with the thorough acceptance of settlers throughout western Canada. Owing to the enormous grants of agricultural lands made by the late government for the encouragement of railway construction in Manitoba and the Northwest, aggregating some 2,000,000 acres in all, the old numbered sections over the best part of the prairie

MILLIONAIRE RETURNS TO FORMER HOME

C. D. Taylor, Said to Have Made a
Great Fortune in the West, to Live
at Wolfville—Rich Strikes of Coal
and Iron Reported.

Wolfville, N. S., Jan. 12.—Mrs. DeWitt left on Saturday last to spend some time in visiting friends in Montreal.

The educational institutions opened on Wednesday. In the Seminary and in the Academy the registrations are considerable.

Mrs. Cumming, of Truro, who, with her little daughter, has been visiting at the home of her parents, Mr. and Mrs. E. E. Archibald, Elmfield avenue, for a few weeks, has returned home.

Herbert Harris has bought the Waverly Hotel at Canaan.

The Rev. G. J. Coulter White, a graduate of Acadia of the year 1880, has had hung in the reception room of the seminary a large painting, six by nine feet in size.

Miss Duncan, of Halifax, is spending a few days visiting friends in Wolfville.

The late Mr. Ellershausen, a German gentleman who came to this country a number of years ago, established a settlement and erected a mansion at Ellershausen, where a considerable number of the largest orchardists of this country, died at his home at Gaspereaux last Thursday, aged 70 years.

Mrs. M. A. Tucker, London, England, is the guest of Capt. and Mrs. Barberie, Wolfville.

Dr. Chipman and C. A. Patrinquin attended the meeting of the municipal council last week in the interests of the Kings County Temperance Alliance.

W. C. Trenholm is visiting friends in Halifax.

Dr. Fred Beckwith has closed his dental rooms and has removed to Annapolis Royal, where he will pursue the practice of his profession.

Mrs. W. S. Pince and family, of Middleton, have been spending a few days visiting in Wolfville.

Dr. Tufis has returned from a trip to Boston.

C. D. Taylor, formerly of Annapolis, and recently president of the Red Top and

provinces have been tied up until the railways secured the particular lands that they preferred. This selection has now been completed in all but the region north of Lake Winnipeg, that was reserved for the Hudson Bay Line so that there is no longer any need of tying up the old numbered sections that remain from settlement.

The present bill declares accordingly that any of the old numbered sections that have not already passed into the hands of the railways, shall be available hereafter for free homesteads. A glance at a map of the several railway land grants shows that there are no old numbered sections remaining either in southern Manitoba or in southeastern Saskatchewan. The present step will, however, release a very large area in both Alberta and Saskatchewan, well suited to cultivation, all of which will now be open to free homesteading.

The government in the present bill adheres to its principle, "the land for the actual settler," where homesteaders hereafter want to acquire by purchase unoccupied land adjoining the quarter section on which they have made their homes, the new law will allow them to buy what they need at a price not less than \$3 per acre. No quarter section will be sold for which anyone has applied as a homestead, but where property is lying idle alongside existing homesteads, that the owners of the latter would like to have for the extension of their operations the new law will make this possible, a concession that is bound to be taken advantage of in very many instances.

Jumbo mining company, of Nevada, has sold out its claim for \$1,000,000. We understand that Mr. Taylor, who is now in Wolfville, intended looking here. He has bought the splendid Hodson property on Main street for his mother, Mrs. J. W. Taylor, of Annapolis.

Sir Frederick Borden was in Canaan last week.

With their customary aggressiveness the Kings County Temperance Alliance is starting a further series of meetings to be held in every section of the county. Prof. E. W. Sawyer, the provincial organizer, with clergymen and prominent Christian workers will be present at all meetings.

Lunenburg, Wolfville and Yarmouth have formed an amateur hockey league. The first game will be between Lunenburg and Wolfville and will be played on Jan. 24th.

John W. Harris has succeeded H. M. L. Weir as manager of the Annapolis Iron Company.

It is said that McKenzie & Mann have discovered near Tatamagouche a vein of hematite iron ore twenty feet thick and extending for fifteen miles, and that they will build a short line from the Halifax and South Western, near Middleton, to haul this ore to Victoria Beach. Also, it is persistently rumored that hard coal has been discovered at Tremont, near the Kings and Annapolis county line.

It is said that McKenzie & Mann have discovered near Tatamagouche a vein of hematite iron ore twenty feet thick and extending for fifteen miles, and that they will build a short line from the Halifax and South Western, near Middleton, to haul this ore to Victoria Beach. Also, it is persistently rumored that hard coal has been discovered at Tremont, near the Kings and Annapolis county line.

It is said that McKenzie & Mann have discovered near Tatamagouche a vein of hematite iron ore twenty feet thick and extending for fifteen miles, and that they will build a short line from the Halifax and South Western, near Middleton, to haul this ore to Victoria Beach. Also, it is persistently rumored that hard coal has been discovered at Tremont, near the Kings and Annapolis county line.

It is said that McKenzie & Mann have discovered near Tatamagouche a vein of hematite iron ore twenty feet thick and extending for fifteen miles, and that they will build a short line from the Halifax and South Western, near Middleton, to haul this ore to Victoria Beach. Also, it is persistently rumored that hard coal has been discovered at Tremont, near the Kings and Annapolis county line.

It is said that McKenzie & Mann have discovered near Tatamagouche a vein of hematite iron ore twenty feet thick and extending for fifteen miles, and that they will build a short line from the Halifax and South Western, near Middleton, to haul this ore to Victoria Beach. Also, it is persistently rumored that hard coal has been discovered at Tremont, near the Kings and Annapolis county line.

It is said that McKenzie & Mann have discovered near Tatamagouche a vein of hematite iron ore twenty feet thick and extending for fifteen miles, and that they will build a short line from the Halifax and South Western, near Middleton, to haul this ore to Victoria Beach. Also, it is persistently rumored that hard coal has been discovered at Tremont, near the Kings and Annapolis county line.

It is said that McKenzie & Mann have discovered near Tatamagouche a vein of hematite iron ore twenty feet thick and extending for fifteen miles, and that they will build a short line from the Halifax and South Western, near Middleton, to haul this ore to Victoria Beach. Also, it is persistently rumored that hard coal has been discovered at Tremont, near the Kings and Annapolis county line.

It is said that McKenzie & Mann have discovered near Tatamagouche a vein of hematite iron ore twenty feet thick and extending for fifteen miles, and that they will build a short line from the Halifax and South Western, near Middleton, to haul this ore to Victoria Beach. Also, it is persistently rumored that hard coal has been discovered at Tremont, near the Kings and Annapolis county line.

It is said that McKenzie & Mann have discovered near Tatamagouche a vein of hematite iron ore twenty feet thick and extending for fifteen miles, and that they will build a short line from the Halifax and South Western, near Middleton, to haul this ore to Victoria Beach. Also, it is persistently rumored that hard coal has been discovered at Tremont, near the Kings and Annapolis county line.

It is said that McKenzie & Mann have discovered near Tatamagouche a vein of hematite iron ore twenty feet thick and extending for fifteen miles, and that they will build a short line from the Halifax and South Western, near Middleton, to haul this ore to Victoria Beach. Also, it is persistently rumored that hard coal has been discovered at Tremont, near the Kings and Annapolis county line.

It is said that McKenzie & Mann have discovered near Tatamagouche a vein of hematite iron ore twenty feet thick and extending for fifteen miles, and that they will build a short line from the Halifax and South Western, near Middleton, to haul this ore to Victoria Beach. Also, it is persistently rumored that hard coal has been discovered at Tremont, near the Kings and Annapolis county line.

It is said that McKenzie & Mann have discovered near Tatamagouche a vein of hematite iron ore twenty feet thick and extending for fifteen miles, and that they will build a short line from the Halifax and South Western, near Middleton, to haul this ore to Victoria Beach. Also, it is persistently rumored that hard coal has been discovered at Tremont, near the Kings and Annapolis county line.

It is said that McKenzie & Mann have discovered near Tatamagouche a vein of hematite iron ore twenty feet thick and extending for fifteen miles, and that they will build a short line from the Halifax and South Western, near Middleton, to haul this ore to Victoria Beach. Also, it is persistently rumored that hard coal has been discovered at Tremont, near the Kings and Annapolis county line.

It is said that McKenzie & Mann have discovered near Tatamagouche a vein of hematite iron ore twenty feet thick and extending for fifteen miles, and that they will build a short line from the Halifax and South Western, near Middleton, to haul this ore to Victoria Beach. Also, it is persistently rumored that hard coal has been discovered at Tremont, near the Kings and Annapolis county line.

It is said that McKenzie & Mann have discovered near Tatamagouche a vein of hematite iron ore twenty feet thick and extending for fifteen miles, and that they will build a short line from the Halifax and South Western, near Middleton, to haul this ore to Victoria Beach. Also, it is persistently rumored that hard coal has been discovered at Tremont, near the Kings and Annapolis county line.

It is said that McKenzie & Mann have discovered near Tatamagouche a vein of hematite iron ore twenty feet thick and extending for fifteen miles, and that they will build a short line from the Halifax and South Western, near Middleton, to haul this ore to Victoria Beach. Also, it is persistently rumored that hard coal has been discovered at Tremont, near the Kings and Annapolis county line.

It is said that McKenzie & Mann have discovered near Tatamagouche a vein of hematite iron ore twenty feet thick and extending for fifteen miles, and that they will build a short line from the Halifax and South Western, near Middleton, to haul this ore to Victoria Beach. Also, it is persistently rumored that hard coal has been discovered at Tremont, near the Kings and Annapolis county line.

It is said that McKenzie & Mann have discovered near Tatamagouche a vein of hematite iron ore twenty feet thick and extending for fifteen miles, and that they will build a short line from the Halifax and South Western, near Middleton, to haul this ore to Victoria Beach. Also, it is persistently rumored that hard coal has been discovered at Tremont, near the Kings and Annapolis county line.

It is said that McKenzie & Mann have discovered near Tatamagouche a vein of hematite iron ore twenty feet thick and extending for fifteen miles, and that they will build a short line from the Halifax and South Western, near Middleton, to haul this ore to Victoria Beach. Also, it is persistently rumored that hard coal has been discovered at Tremont, near the Kings and Annapolis county line.

It is said that McKenzie & Mann have discovered near Tatamagouche a vein of hematite iron ore twenty feet thick and extending for fifteen miles, and that they will build a short line from the Halifax and South Western, near Middleton, to haul this ore to Victoria Beach. Also, it is persistently rumored that hard coal has been discovered at Tremont, near the Kings and Annapolis county line.

It is said that McKenzie & Mann have discovered near Tatamagouche a vein of hematite iron ore twenty feet thick and extending for fifteen miles, and that they will build a short line from the Halifax and South Western, near Middleton, to haul this ore to Victoria Beach. Also, it is persistently rumored that hard coal has been discovered at Tremont, near the Kings and Annapolis county line.

SCARCITY OF FUEL IN THE WEST CAUSES SOME ANXIETY

Reports to Interior Department Show
Serious Situation in Many Places—
Railway Service is Much Demoralized.

Ottawa, Jan. 13.—On account of alarming reports as to weather and fuel conditions in the west, the department of the interior communicated by wire with land agents and sub agents at Mandan, Saskatchewan and Alberta regarding the weather, the supplies of fuel, conditions of stock and railway situation. Replies were received from over sixty points in the three provinces on January 9 and 10.

Unusually severe weather and heavy snow are reported from all points. There is snow between two and three feet deep in Manitoba, Eastern and North Saskatchewan, and Northern Alberta and from six to eighteen inches in the ranching country of Southern Alberta and Southwestern Saskatchewan.

The passenger train service in Manitoba and Saskatchewan is running a day late, and the freight service is badly demoralized for the time. On the C. N. R. branch from Regina to Prince Albert, the conditions are somewhat worse, and on the served for the Hudson Bay Line and the C. P. R. main line in Saskatchewan, and at Redvers on the Arco branch of the C. P. R. in Southeastern Saskatchewan, the conditions are somewhat better than on the other line. The only serious complaint as to train service in Alberta is from Stettler on the Lacombe branch between Calgary and Edmonton.

The fuel situation is reported seriously serious in the settlements south of Grenfell on the C. P. R. main line in Saskatchewan, and at Redvers on the Arco branch of the C. P. R. in Southeastern Saskatchewan, the conditions are somewhat better than on the other line. The only serious complaint as to train service in Alberta is from Stettler on the Lacombe branch between Calgary and Edmonton.

The fuel situation is reported seriously serious in the settlements south of Grenfell on the C. P. R. main line in Saskatchewan, and at Redvers on the Arco branch of the C. P. R. in Southeastern Saskatchewan, the conditions are somewhat better than on the other line. The only serious complaint as to train service in Alberta is from Stettler on the Lacombe branch between Calgary and Edmonton.

The fuel situation is reported seriously serious in the settlements south of Grenfell on the C. P. R. main line in Saskatchewan, and at Redvers on the Arco branch of the C. P. R. in Southeastern Saskatchewan, the conditions are somewhat better than on the other line. The only serious complaint as to train service in Alberta is from Stettler on the Lacombe branch between Calgary and Edmonton.

The fuel situation is reported seriously serious in the settlements south of Grenfell on the C. P. R. main line in Saskatchewan, and at Redvers on the Arco branch of the C. P. R. in Southeastern Saskatchewan, the conditions are somewhat better than on the other line. The only serious complaint as to train service in Alberta is from Stettler on the Lacombe branch between Calgary and Edmonton.

The fuel situation is reported seriously serious in the settlements south of Grenfell on the C. P. R. main line in Saskatchewan, and at Redvers on the Arco branch of the C. P. R. in Southeastern Saskatchewan, the conditions are somewhat better than on the other line. The only serious complaint as to train service in Alberta is from Stettler on the Lacombe branch between Calgary and Edmonton.

The fuel situation is reported seriously serious in the settlements south of Grenfell on the C. P. R. main line in Saskatchewan, and at Redvers on the Arco branch of the C. P. R. in Southeastern Saskatchewan, the conditions are somewhat better than on the other line. The only serious complaint as to train service in Alberta is from Stettler on the Lacombe branch between Calgary and Edmonton.

The fuel situation is reported seriously serious in the settlements south of Grenfell on the C. P. R. main line in Saskatchewan, and at Redvers on the Arco branch of the C. P. R. in Southeastern Saskatchewan, the conditions are somewhat better than on the other line. The only serious complaint as to train service in Alberta is from Stettler on the Lacombe branch between Calgary and Edmonton.

The fuel situation is reported seriously serious in the settlements south of Grenfell on the C. P. R. main line in Saskatchewan, and at Redvers on the Arco branch of the C. P. R. in Southeastern Saskatchewan, the conditions are somewhat better than on the other line. The only serious complaint as to train service in Alberta is from Stettler on the Lacombe branch between Calgary and Edmonton.

The fuel situation is reported seriously serious in the settlements south of Grenfell on the C. P. R. main line in Saskatchewan, and at Redvers on the Arco branch of the C. P. R. in Southeastern Saskatchewan, the conditions are somewhat better than on the other line. The only serious complaint as to train service in Alberta is from Stettler on the Lacombe branch between Calgary and Edmonton.

The fuel situation is reported seriously serious in the settlements south of Grenfell on the C. P. R. main line in Saskatchewan, and at Redvers on the Arco branch of the C. P. R. in Southeastern Saskatchewan, the conditions are somewhat better than on the other line. The only serious complaint as to train service in Alberta is from Stettler on the Lacombe branch between Calgary and Edmonton.

The fuel situation is reported seriously serious in the settlements south of Grenfell on the C. P. R. main line in Saskatchewan, and at Redvers on the Arco branch of the C. P. R. in Southeastern Saskatchewan, the conditions are somewhat better than on the other line. The only serious complaint as to train service in Alberta is from Stettler on the Lacombe branch between Calgary and Edmonton.

The fuel situation is reported seriously serious in the settlements south of Grenfell on the C. P. R. main line in Saskatchewan, and at Redvers on the Arco branch of the C. P. R. in Southeastern Saskatchewan, the conditions are somewhat better than on the other line. The only serious complaint as to train service in Alberta is from Stettler on the Lacombe branch between Calgary and Edmonton.

The fuel situation is reported seriously serious in the settlements south of Grenfell on the C. P. R. main line in Saskatchewan, and at Redvers on the Arco branch of the C. P. R. in Southeastern Saskatchewan, the conditions are somewhat better than on the other line. The only serious complaint as to train service in Alberta is from Stettler on the Lacombe branch between Calgary and Edmonton.

The fuel situation is reported seriously serious in the settlements south of Grenfell on the C. P. R. main line in Saskatchewan, and at Redvers on the Arco branch of the C. P. R. in Southeastern Saskatchewan, the conditions are somewhat better than on the other line. The only serious complaint as to train service in Alberta is from Stettler on the Lacombe branch between Calgary and Edmonton.

The fuel situation is reported seriously serious in the settlements south of Grenfell on the C. P. R. main line in Saskatchewan, and at Redvers on the Arco branch of the C. P. R. in Southeastern Saskatchewan, the conditions are somewhat better than on the other line. The only serious complaint as to train service in Alberta is from Stettler on the Lacombe branch between Calgary and Edmonton.

The fuel situation is reported seriously serious in the settlements south of Grenfell on the C. P. R. main line in Saskatchewan, and at Redvers on the Arco branch of the C. P. R. in Southeastern Saskatchewan, the conditions are somewhat better than on the other line. The only serious complaint as to train service in Alberta is from Stettler on the Lacombe branch between Calgary and Edmonton.

The fuel situation is reported seriously serious in the settlements south of Grenfell on the C. P. R. main line in Saskatchewan, and at Redvers on the Arco branch of the C. P. R. in Southeastern Saskatchewan, the conditions are somewhat better than on the other line. The only serious complaint as to train service in Alberta is from Stettler on the Lacombe branch between Calgary and Edmonton.

The fuel situation is reported seriously serious in the settlements south of Grenfell on the C. P. R. main line in Saskatchewan, and at Redvers on the Arco branch of the C. P. R. in Southeastern Saskatchewan, the conditions are somewhat better than on the other line. The only serious complaint as to train service in Alberta is from Stettler on the Lacombe branch between Calgary and Edmonton.

The fuel situation is reported seriously serious in the settlements south of Grenfell on the C. P. R. main line in Saskatchewan, and at Redvers on the Arco branch of the C. P. R. in Southeastern Saskatchewan, the conditions are somewhat better than on the other line. The only serious complaint as to train service in Alberta is from Stettler on the Lacombe branch between Calgary and Edmonton.

The fuel situation is reported seriously serious in the settlements south of Grenfell on the C. P. R. main line in Saskatchewan, and at Redvers on the Arco branch of the C. P. R. in Southeastern Saskatchewan, the conditions are somewhat better than on the other line. The only serious complaint as to train service in Alberta is from Stettler on the Lacombe branch between Calgary and Edmonton.

The fuel situation is reported seriously serious in the settlements south of Grenfell on the C. P. R. main line in Saskatchewan, and at Redvers on the Arco branch of the C. P. R. in Southeastern Saskatchewan, the conditions are somewhat better than on the other line. The only serious complaint as to train service in Alberta is from Stettler on the Lacombe branch between Calgary and Edmonton.

The fuel situation is reported seriously serious in the settlements south of Grenfell on the C. P. R. main line in Saskatchewan, and at Redvers on the Arco branch of the C. P. R. in Southeastern Saskatchewan, the conditions are somewhat better than on the other line. The only serious complaint as to train service in Alberta is from Stettler on the Lacombe branch between Calgary and Edmonton.

The fuel situation is reported seriously serious in the settlements south of Grenfell on the C. P. R. main line in Saskatchewan, and at Redvers on the Arco branch of the C. P. R. in Southeastern Saskatchewan, the conditions are somewhat better than on the other line. The only serious complaint as to train service in Alberta is from Stettler on the Lacombe branch between Calgary and Edmonton.

The fuel situation is reported seriously serious in the settlements south of Grenfell on the C. P. R. main line in Saskatchewan, and at Redvers on the Arco branch of the C. P. R. in Southeastern Saskatchewan, the conditions are somewhat better than on the other line. The only serious complaint as to train service in Alberta is from Stettler on the Lacombe branch between Calgary and Edmonton.

The fuel situation is reported seriously serious in the settlements south of Grenfell on the C. P. R. main line in Saskatchewan, and at Redvers on the Arco branch of the C. P. R. in Southeastern Saskatchewan, the conditions are somewhat better than on the other line. The only serious complaint as to train service in Alberta is from Stettler on the Lacombe branch between Calgary and Edmonton.

The fuel situation is reported seriously serious in the settlements south of Grenfell on the C. P. R. main line in Saskatchewan, and at Redvers on the Arco branch of the C. P. R. in Southeastern Saskatchewan, the conditions are somewhat better than on the other line. The only serious complaint as to train service in Alberta is from Stettler on the Lacombe branch between Calgary and Edmonton.

The fuel situation is reported seriously serious in the settlements south of Grenfell on the C. P. R. main line in Saskatchewan, and at Redvers on the Arco branch of the C. P. R. in Southeastern Saskatchewan, the conditions are somewhat better than on the other line. The only serious complaint as to train service in Alberta is from Stettler on the Lacombe branch between Calgary and Edmonton.

The fuel situation is reported seriously serious in the settlements south of Grenfell on the C. P. R. main line in Saskatchewan, and at Redvers on the Arco branch of the C. P. R. in Southeastern Saskatchewan, the conditions are somewhat better than on the other line. The only serious complaint as to train service in Alberta is from Stettler on the Lacombe branch between Calgary and Edmonton.

The fuel situation is reported seriously serious in the settlements south of Grenfell on the C. P. R. main line in Saskatchewan, and at Redvers on the Arco branch of the C. P. R. in Southeastern Saskatchewan, the conditions are somewhat better than on the other line. The only serious complaint as to train service in Alberta is from Stettler on the Lacombe branch between Calgary and Edmonton.

The fuel situation is reported seriously serious in the settlements south of Grenfell on the C. P. R. main line in Saskatchewan, and at Redvers on the Arco branch of the C. P. R. in Southeastern Saskatchewan, the conditions are somewhat better than on the other line. The only serious complaint as to train service in Alberta is from Stettler on the Lacombe branch between Calgary and Edmonton.

The fuel situation is reported seriously serious in the settlements south of Grenfell on the C. P. R. main line in Saskatchewan, and at Redvers on the Arco branch of the C. P. R. in Southeastern Saskatchewan, the conditions are somewhat better than on the other line. The only serious complaint as to train service in Alberta is from Stettler on the Lacombe branch between Calgary and Edmonton.

The fuel situation is reported seriously serious in the settlements south of Grenfell on the C. P. R. main line in Saskatchewan, and at Redvers on the Arco branch of the C. P. R. in Southeastern Saskatchewan, the conditions are somewhat better than on the other line. The only serious complaint as to train service in Alberta is from Stettler on the Lacombe branch between Calgary and Edmonton.

The fuel situation is reported seriously serious in the settlements south of Grenfell on the C. P. R. main line in Saskatchewan, and at Redvers on the Arco branch of the C. P. R. in Southeastern Saskatchewan, the conditions are somewhat better than on the other line. The only serious complaint as to train service in Alberta is from Stettler on the Lacombe branch between Calgary and Edmonton.

The fuel situation is reported seriously serious in the settlements south of Grenfell on the C. P. R. main line in Saskatchewan, and at Redvers on the Arco branch of the C. P. R. in Southeastern Saskatchewan, the conditions are somewhat better than on the other line. The only serious complaint as to train service in Alberta is from Stettler on the Lacombe branch between Calgary and Edmonton.

WILL BAR GERMANY OUT OF PERSIA

Britain and Russia Agree on Spheres
of Influence.

Limitation of Armaments Not
Likely to Be Supported at
Hague Conference, Nor Immu-
nity of Merchant Ships in Time
of War.

London, Jan. 11.—The Pacific views held in German official circles with regard to the second peace conference at The Hague have been further minimized by the possibility of international complications as a result of the death of the Shah of Persia.

At the same time the determination of the German government to support the limitation of armaments is being questioned by the possibility of international complications as a result of the death of the Shah of Persia.

The desire of the United States and Germany to refrain from using Russia to fix a date for the assembling of The Hague conference is being questioned by the possibility of international complications as a result of the death of the Shah of Persia.

The desire of the United States and Germany to refrain from using Russia to fix a date for the assembling of The Hague conference is being questioned by the possibility of international complications as a result of the death of the Shah of Persia.

The desire of the United States and Germany to refrain from using Russia to fix a date for the assembling of The Hague conference is being questioned by the possibility of international complications as a result of the death of the Shah of Persia.

The desire of the United States and Germany to refrain from using Russia to fix a date for the assembling of The Hague conference is being questioned by the possibility of international complications as a result of the death of the Shah of Persia.

The desire of the United States and Germany to refrain from using Russia to fix a date for the assembling of The Hague conference is being questioned by the possibility of international complications as a result of the death of the Shah of Persia.

The desire of the United States and Germany to refrain from using Russia to fix a date for the assembling of The Hague conference is being questioned by the possibility of international complications as a result of the death of the Shah of Persia.

The desire of the United States and Germany to refrain from using Russia to fix a date for the assembling of The Hague conference is being questioned by the possibility of international complications as a result of the death of the Shah of Persia.

The desire of the United States and Germany to refrain from using Russia to fix a date for the assembling of The Hague conference is being questioned by the possibility of international complications as a result of the death of the Shah of Persia.

The desire of the United States and Germany to refrain from using Russia to fix a date for the assembling of The Hague conference is being questioned by the possibility of international complications as a result of the death of the Shah of Persia.

The desire of the United States and Germany to refrain from using Russia to fix a date for the assembling of The Hague conference is being questioned by the possibility of international complications as a result of the death of the Shah of Persia.

The desire of the United States and Germany to refrain from using Russia to fix a date for the assembling of The Hague conference is being questioned by the possibility of international complications as a result of the death of the Shah of Persia.

The desire of the United States and Germany to refrain from using Russia to fix a date for the assembling of The Hague conference is being questioned by the possibility of international complications as a result of the death of the Shah of Persia.

The desire of the United States and Germany to refrain from using Russia to fix a date for the assembling of The Hague conference is being questioned by the possibility of international complications as a result of the death of the Shah of Persia.

The desire of the United States and Germany to refrain from using Russia to fix a date for the assembling of The Hague conference is being questioned by the possibility of international complications as a result of the death of the Shah of Persia.

The desire of the United States and Germany to refrain from using Russia to fix a date for the assembling of The Hague conference is being questioned by the possibility of international complications as a result of the death of the Shah of Persia.

The desire of the United States and Germany to refrain from using Russia to fix a date for the assembling of The Hague conference is being questioned by the possibility of international complications as a result of the death of the Shah of Persia.

The desire of the United States and Germany to refrain from using Russia to fix a date for the assembling of The Hague conference is being questioned by the possibility of international complications as a result of the death of the Shah of Persia.

The desire of the United States and Germany to refrain from using Russia to fix a date for the assembling of The Hague conference is being questioned by the possibility of international complications as a result of the death of the Shah of Persia.

The desire of the United States and Germany to refrain from using Russia to fix a date for the assembling of The Hague conference is being questioned by the possibility of international complications as a result of the death of the Shah of Persia.

The desire of the United States and Germany to refrain from using Russia to fix a date for the assembling of The Hague conference is being questioned by the possibility of international complications as a result of the death of the Shah of Persia.

The desire of the United States and Germany to refrain from using Russia to fix a date for the assembling of The Hague conference is being questioned by the possibility of international complications as a result of the death of the Shah of Persia.

The desire of the United States and Germany to refrain from using Russia to fix a date for the assembling of The Hague conference is being questioned by the possibility of international complications as a result of the death of the Shah of Persia.

The desire of the United States and Germany to refrain from using Russia to fix a date for the assembling of The Hague conference is being questioned by the possibility of international complications as a result of the death of the Shah of Persia.

The desire of the United States and Germany to refrain from using Russia to fix a date for the assembling of The Hague conference is being questioned by the possibility of international complications as a result of the death of the Shah of Persia.

The desire of the United States and Germany to refrain from using Russia to fix a date for the assembling of The Hague conference is being questioned by the possibility of international complications as a result of the death of the Shah of Persia.

The desire of the United States and Germany to refrain from using Russia to fix a date for the assembling of The Hague conference is being questioned by the possibility of international complications as a result of the death of the Shah of Persia.

The desire of the United States and Germany to refrain from using Russia to fix a date for the assembling of The Hague conference is being questioned by the possibility of international complications as a result of the death of the Shah of Persia.

The desire of the United States and Germany to refrain from using Russia to fix a date for the assembling of The Hague conference is being questioned by the possibility of international complications as a result of the death of the Shah of Persia.

The desire of the United States and Germany to refrain from using Russia to fix a date for the assembling of The Hague conference is being questioned by the possibility of international complications as a result of the death of the Shah of Persia.

The desire of the United States and Germany to refrain from using Russia to fix a date for the assembling of The Hague conference is being questioned by the possibility of international complications as a result of the death of the Shah of Persia.

The desire of the United States and Germany to refrain from using Russia to fix a date for the assembling of The Hague conference is being questioned by the possibility of international complications as a result of the death of the Shah of Persia.

The desire of the United States and Germany to refrain from using Russia to fix a date for the assembling of The Hague conference is being questioned by the possibility of international complications as a result of the death of the Shah of Persia.