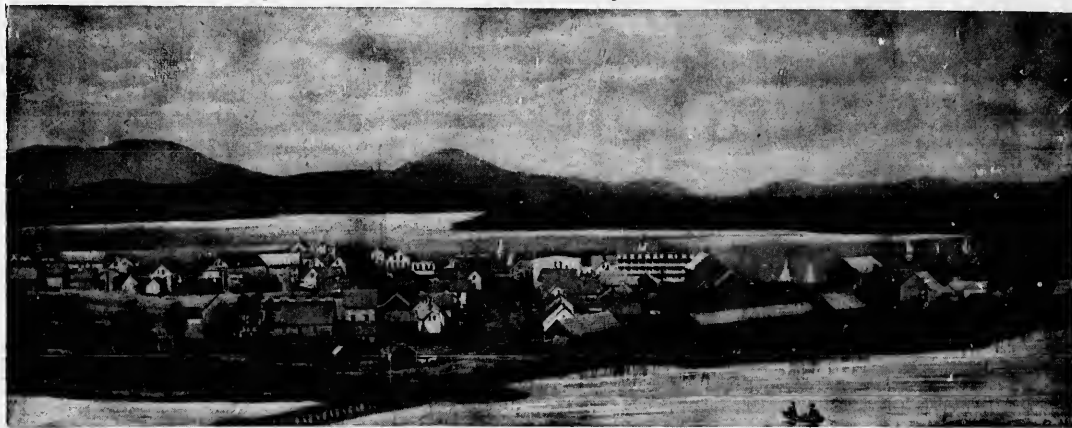


THE dividing lines of four important towns, viz. Bolton, Potton, Stanstead, and Magog, meet upon this point. Past Gibraltar the lake turns slightly to the east, and Lords Island, the last of much importance, is about three miles down the lake and awaits a purchaser to improve and build upon it. We must here caution the reader that with



NEWPORT, VT.

Lake Memphremagog, north is down and south is up. The remaining six or seven miles of the lake become tame in comparison to that already described, but a few miles beyond Magog, Mount Orford rears his solemn head three thousand three hundred feet above the lake and is the highest land in the Province of Quebec.