

The Massey Manufacturing Co.'s
EXTENSIVE FACTORY.

The Largest of the kind in Canada.

192,000 square feet, or over four acres floor space, equal to a workshop 36 feet wide, one mile long.

The wood engraving on this page represents our Factory as it has been, but not as now being extended—additions equal to 260 feet long, 60 feet wide and four stories in height are being built, the whole to be completed by October next—in time for use in next season's business. We will, in giving a short description of the Factory, speak of it as finished.

The works are situated on the old Exhibition Grounds, near the corner of King Street and Strachan Avenue, and occupy six acres. In the construction of the building over two million brick, one million feet of lumber, twelve hundred loads of stone, eighteen thousand panes of glass, etc., are used. The main building has a frontage of 485 feet on Massey Street, with an L or branch of 260 feet, all having an average of from 50 to 60 feet in width, and four stories in height, including basement. Total length therefore of main building 745 feet, four stories high.

The foundry and blacksmith shop is 270 x 60 feet. Knife and Bar and Rake Tooth department 100 x 36, two stories. Engine-room and Boiler-house 50 x 70. Tool-room and Patternmakers department, 20 x 40, two stories. These buildings are all brick. A frame storehouse 200 x 20; coal sheds, 400 x 15; a stable and driving-house, 50 x 75, and a substantial oil-house under ground, 27 x 33, completes the list. Two private R. R. sidings capable of holding 20 cars at a time—unloading and loading, are so placed as to deliver the raw materials at one end of the works and receive the finished product

at the opposite end. During a year's time no less than from 1,200 to 1,500 loaded cars are received and shipped, the simple handling of so great an amount of goods requiring a large staff of men.

The power is at present supplied by two 60 horse-power boilers and a 100 horse-power engine; also by a 30 horse-power portable engine and boiler (the latter will be at once displaced by two new 60 horse-power boilers, making four in all, and a new 60 or 75 horse-power engine). In no other Reaper and Mower factory in Canada can there be found so complete facilities and so plentiful a supply of the most expensive and at the same time necessary special tools and machinery, several of these costing from one thousand to upwards of two thousand dollars each.

The buildings are heated by steam. Five large and powerful steam elevators convey materials or finished work from one flat to another in the different departments.

The employees number over 400, (their pay-roll amounts to about \$15,000 a month,) and are in charge of fifteen foremen, the whole superintended by Mr. Matthew Garvin, our mechanical superintendent for several years. Two night watchmen have charge of the premises at night, and a day patrolman during the day. There are ten on the office staff and a board of three directors,—H. A. Massey, President; C. A. Massey, Vice-President, and General Manager, and George Metcalfe, Secretary.

Mr. C. D. Massey has lately taken the responsible position of Treasurer of the Company.

The new offices of the company (50 x 65 ft., four stories including basement) which will soon be completed, will be very handsome, and will have all the modern conveniences, and every attention has been paid to the health and comfort of all connected with the establishment. It is proposed to convert the second and third stories of the office building for the use of the employees as a Library, Reading-room, Dining or Concert Hall, etc., etc. The first or ground floor and basement being used for the general business of the Company. It is no idle boast when we state that the demand for our productions has always exceeded the supply, and that our sales are double

that of any of our competitors; this is from the simple fact that the machines made by us are the best in the market—of the best styles—made of the best materials—by the best workmen and best machinery to be obtained. It has always been our motto to turn out nothing but "The Best," and the best is always cheapest in the end. It is by patient, persevering labour for nearly forty years, backed by ample capital, and a conscientious effort to serve their customers well, that the Company and its founders have been able to gradually work the business up to its present state, and none more fully reaps the benefit of their splendid facilities or achievements than the best and the leading farmers of Canada, who are sure to be on their long list of customers.

The Massey Harvester equal to the emergency.

BRICKLEY, Northumberland Co., Jan. 8, 1883.

The Massey Manufacturing Co., Toronto:

GENTS,—I purchased one of your Massey Harvesters last August, from your agent, Mr. Thos. Clark, and I cut 70 acres over very rough, steep hills and stony ground, and it has not cost one cent for repairs. I had about four acres of badly lodged grain that I have had to cut with scythes the past two years. I put your Reaper to work in the tangled mass, and to my surprise it picked it up clean and laid it in a snug sheaf, with much ease on my horses. There is nearly every make of Reapers manufactured, in use in my neighborhood, and I prefer the Massey to any of them for lightness of draft, simplicity of construction, the ease by which it may be handled in rough ground and cutting and delivery of sheaf. I consider it is the best machine in the market.

Yours respectfully, A. B. GERMAN.

LIKE HIS FATHER.—"Come here to me," said an Arkansaw woman to her son. "Did you go down to the bakery as I told you?"

"None."

"Didn't I tell you to go?"

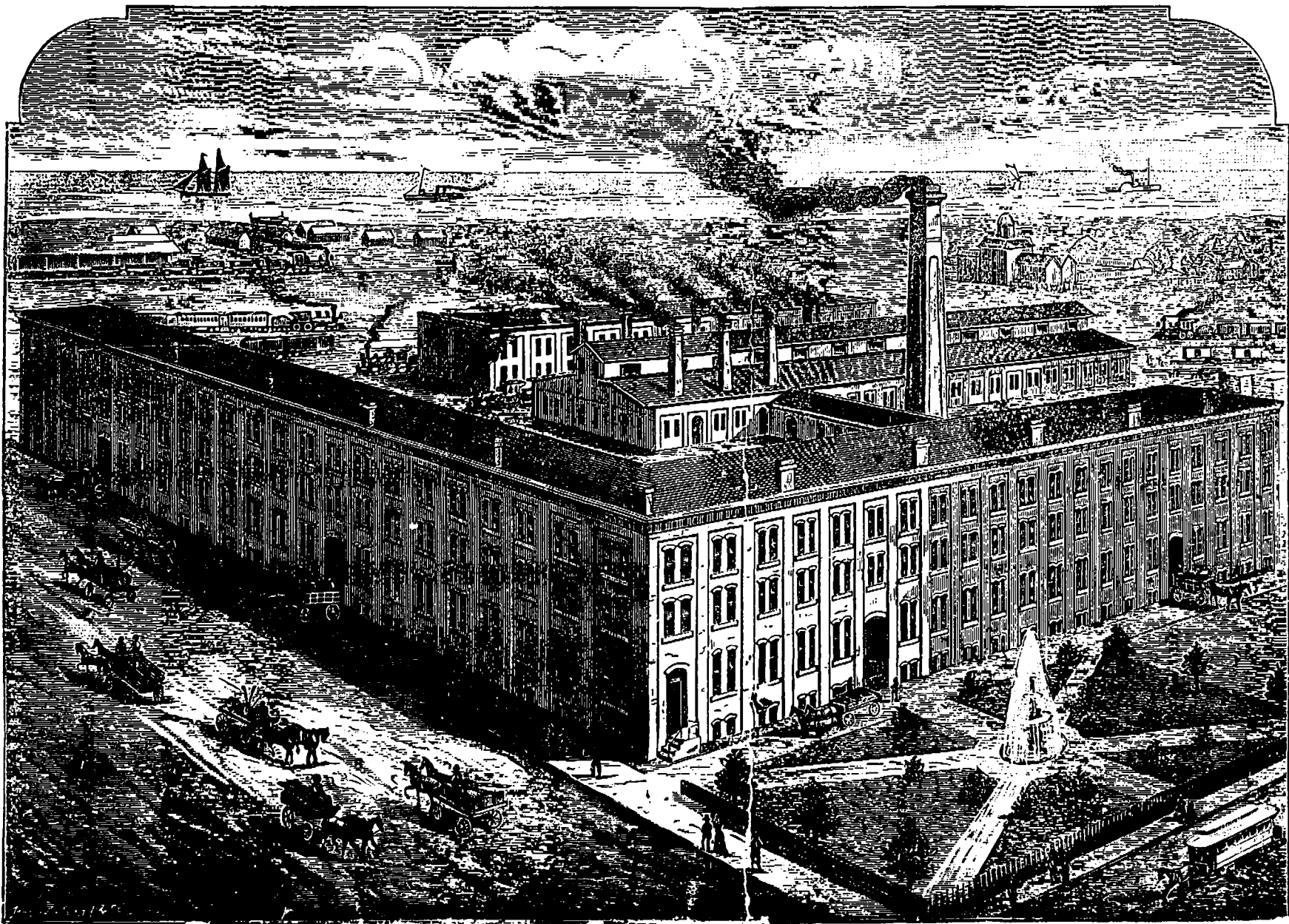
"Yessum."

"Why didn't you go?"

"Didn't want to."

"I am just going to have you whipped, sir, that's what I am going to do. You are as stubborn as a mule. You are just like your father."

The largest and most complete Factory in the Dominion of Canada devoted exclusively to the manufacture of Harvesting Machinery.



The largest and most complete Factory in the Dominion of Canada devoted exclusively to the manufacture of Harvesting Machinery.

THE MASSEY MANUFACTURING COMPANY'S WORKS, TORONTO, ONT.

NORTH-WESTERN BRANCH:

T. J. McBRIDE, Manager,

WINNIPEG, MAN.

QUEBEC BRANCH:

JAS. R. SHARP, Shipping Agent,
103-108 Common Street,

MONTREAL, QUE.

EASTERN BRANCH:

TIPPET, BURDITT & CO.,

ST. JOHN, N.B.