

Grand Trunk R'y. Headquarters for Complete Threshing Outfits

The Old and Popular Route
TO
MONTREAL, DETROIT, CHICAGO

AND
All the Principal Points in Canada and the
United States.

IT IS POSITIVELY THE
ONLY From TORONTO

Running the Celebrated Pullman Palace
Sleeping and Parlor Cars.

SPEED, SAFETY, CIVILITY.

Toronto to Chicago in 14 Hours.

Best and Quickest Route to MANITOBA, BRITISH
COLUMBIA, and the PACIFIC COAST.

FOR FARES, Time Tables, Tickets and general
information apply at the Union
Depot, City Ticket Offices, corner King and Yonge,
and 20 York Street, or to any of the Company's
Agents.

JOSEPH HICKSON,

WM. EDGAR, General Manager.
General Passenger Agent.

PARKS' Cotton Manufactures.

Awarded the only "Gold Medal" given at the
Toronto Industrial Exhibition of 1885
for COTTON GOODS.

Fancy Wove Shirtings,

Fast Colours, Full Weight.

Quality always equal to samples sent out.

COTTONADES.

Our celebrated line of LANSLOWNE TWEEDS,
The best value for least cost of any made in Canada

Ball Knitting Cottons,

Better Spun, Twisted, Bleached and Dyed than any
other in the market.

For sale by all Wholesale Houses.
No goods genuine without our name upon them
No "private brands."

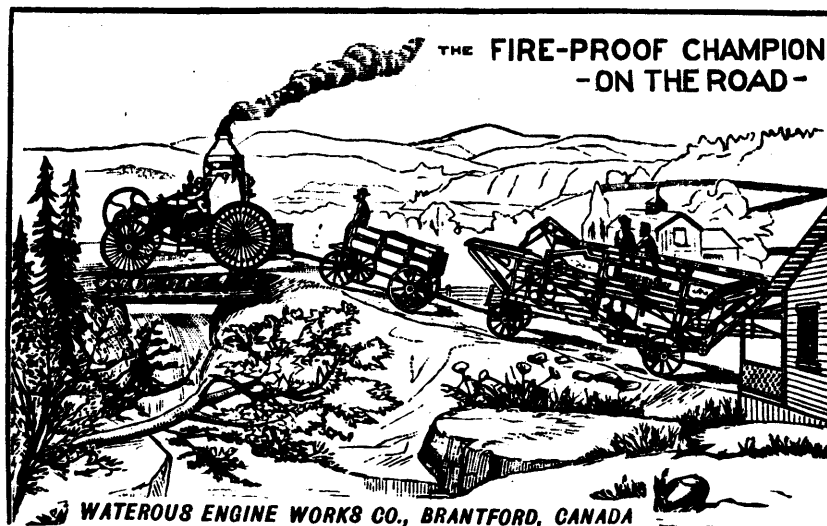
WM. PARKS & SON,

(LIMITED.)

ST. JOHN, N.B.

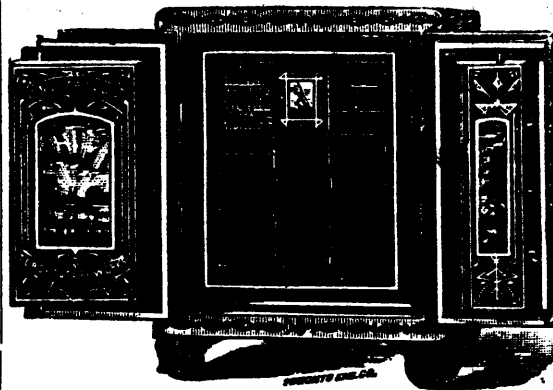
AGENTS:

WILLIAM HEWETT, **DUNCAN BELL.**
Toronto Montreal
BEDARD, GIRARD & CIE. Quebec.



WATERLOO ENGINE WORKS CO., BRANTFORD, CANADA

J. & J. TAYLOR, TORONTO SAFE WORKS.

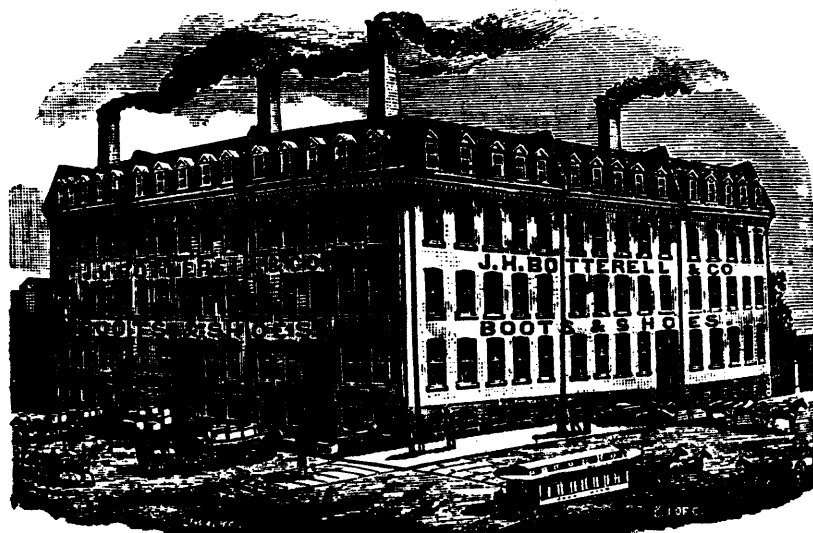


ESTABLISHED

1855.

MANUFACTURERS OF
ALL KINDS OF FIRE AND BURGLAR PROOF SAFES.
PRISON LOCKS AND JAIL WORK A SPECIALTY.

We call the attention of Jewellers to our new style of Fire and Burglar Proof Safes,
specially adapted for their use.



TO THE BOOT & SHOE TRADE.

J. H. Botterell & Co.

MANUFACTURERS,

QUEBEC,

Beg to announce that their **NEW SAMPLES**
for the **FALL SEASON** will be ready 1st
May, and will be offered for your inspection
by our Travellers immediately afterwards.

The New Goods will be found to con-
tain many desirable features, and to be
even more closely adapted to the wants of
the trade than heretofore.