

BRITANNIA SMELTING CO.'S SMELTING  
WORKS AT CROFTON, VANCOUVER  
ISLAND, B. C.

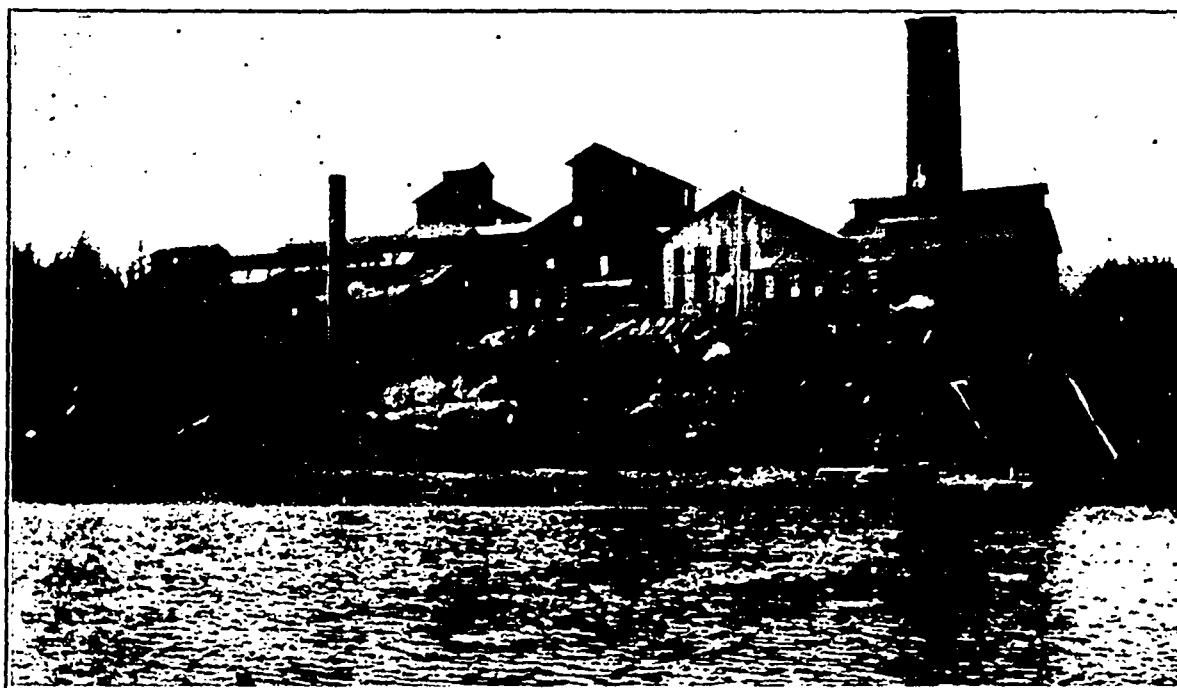
(By E. Jacobs.)

THE Britannia Smelting Co.'s smelting works are situated at Crofton, on the east coast of Vancouver Island, British Columbia, and are distant from the city of Victoria about 50 miles, whether by rail or water. They were erected in 1901-2 by the Northwestern Smelting & Refining Co., of which Mr. James Breen was president and general manager, and Mr. Herman C. Bellinger assistant manager and metallurgist in charge. Messrs. Breen and Bellinger had previously been actively engaged in smelting

out to a sufficient depth of water to admit of the discharge at the dock thus provided of ores from any part of the Pacific, northward as far as Alaska, and southward from even South American shipping points.

When the town of Crofton was platted, which was about the time the erection of the smelter was commenced, a smelter site, embracing an area of some 40 acres adjoining the town on the east and south, was reserved. On part of this site the works were erected. The accompanying plan, which includes additions made recently by the Britannia Smelting Co., will serve to convey a fair idea of the area they cover.

In accordance with the original plan of making the Lenora and other Mount Sicker mines the main source of the ore supply, the railway trackage facili-



Britannia Smelting Co's Smelter.—View of Works from Osborne Bay.

British Columbia ores, having erected and operated smelters at Trail, B.C., and Northport, Washington, U.S.A., respectively, the former in 1895-6 for the British Columbia Smelting & Refining Co., organised and controlled by Mr. F. August Heinze, and the latter in 1897 for a company formed by leading shareholders in what was then the Le Roi Gold Mining Co.

The smelter at Crofton was built primarily for the reduction of the ore of the Lenora mine, at Mount Sicker, to connect which mine with the smelter a narrow-gauge railway  $8\frac{1}{2}$  miles in length was constructed and was equipped with two Shay geared steam locomotives, bottom-dumping ore cars, etc. As the purchase and treatment of custom ores was also included in the plan of operations of the company a wharf was built from a point near the works

ties provided were with a view to accommodating a larger tonnage from landward than from the sea. Conditions are now changed, though, the Britannia mines, situated off Howe sound, on the mainland coast, and distant some 60 miles by water from the smelting works, being looked to for the present main supply of ore, while it is expected that next year mines in south-eastern Alaska will substantially supplement the tonnage obtainable from the nearer source. Further, coal and coke come by water from Vancouver Island collieries, higher up the coast, railway connection between the collieries and the smelting works not yet having been made. The importance of having convenient dock arrangements and unloading appliances, together with ample trackage to facilitate the conveyance of ore from dock to smelter is therefore self evident.