

another at the right side; and the closing is made invisibly at the left side.

All sorts of silken and woollen goods will make up handsomely in this way, either alone or in combination with velvet, fancy silk or the same material in a contrasting color. The mode is especially well adapted to plain and fancy gingham, plain and embroidered chambray, nainsook and other washable goods. Lace, all-over embroidery, embroidered edging, ribbon, fancy braid, etc., may be applied for decoration in any tasteful manner preferred.

We have pattern No. 4456 in thirteen sizes for ladies from twenty-eight to forty-six inches, bust measure. To make the costume for a lady of medium size, requires eleven yards and seven-eighths of figured and a yard and a-fourth of plain India silk each twenty inches wide, together with three-fourths of a yard of lace net twenty-seven inches wide for facings. Of one material, it needs eleven yards and three-fourths twenty-two inches wide, or nine yards and three-fourths twenty-seven inches wide, or seven yards and a-half thirty-six inches wide, or six yards and an-eighth forty-four inches wide. Price of pattern, 1s. 8d. or 40 cents.

LADIES' COSTUME,
WITH CIRCULAR BELL
SKIRT, HAVING A
SLIGHT TRAIN (PERFOR-
ATED FOR ROUND
LENGTH).

(For Illustrations see Page 322.)

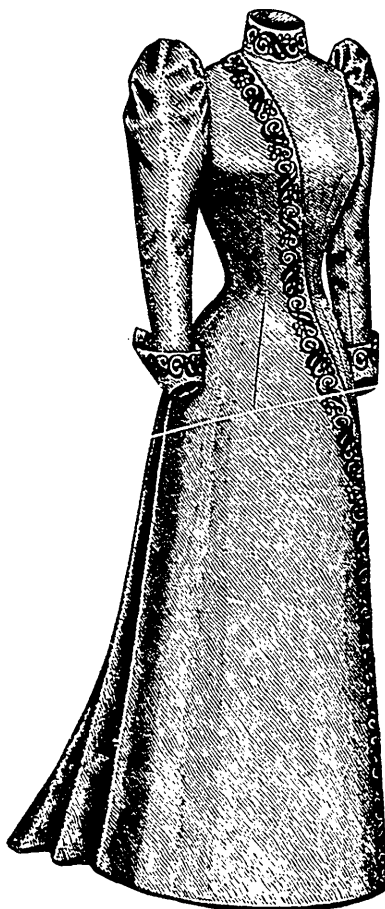
No. 4412.—Dress goods, velvet and India silk are united in this costume, with bands of velvet and a ribbon sash for garniture, at figure No. 424 T in this DELINEATOR.

The costume is here represented made of fancy cheviot and plain silk. The skirt is a stylish example of the circular bell variety and has bias back edges joined in a center seam between backward-turning plaits that flare in graceful, rounding folds to the edge of the slight train. The top of the skirt is rendered smooth over the hips by four darts at each side, and the skirt falls with sheath-like closeness over a foundation skirt which is fashioned with five bell-gores and made with a slight train. If desired, both the skirt and foundation may be shortened to round length, the pattern making provision for both styles. A placket opening is finished above the center seam and at the left side-back seam of the foundation skirt. The lower edge of the skirt is decorated with two rows of fancy gimp.

The fanciful basque extends to three-quarter depth at the back and sides, and its loose jacket-fronts reach but little below the waist-line. They are reversed at the top in stylish lapels, below which they flare gradually to form points at the lower front corners; and they open over blouse fronts that are gathered at the top and arranged upon dart-fitted fronts of lining, which close at the center with button-holes and buttons. A box-plait is arranged over the closing of the blouse fronts, which is made invisibly at the center; and the fulness at the lower edge is collected in two short rows of shirring made at belt depth apart at each side of the closing. The lower edge of the blouse is concealed beneath belt sections which pass into the under-arm seams, their pointed ends being crossed at the center of the front and fastened invisibly. Under-arm and side-back gores and a curving center seam complete the superb adjustment. The center seam terminates below the waist-line above

extra width underfolded in a forward-turning plait at each side, the plait overlapping the hemmed back edge of the back. Each side seam is discontinued above extra width, which is allowed at the back edge of the under-arm gore, and underfolded in a broad, forward-turning plait that overlaps the hemmed back edge. The coat sleeves are mounted upon smooth linings; they are gathered at the top to curve fashionably high above the shoulders, and the wrists are finished with cuffs that are rounded at the back of the arm and reversed at the top to show an underfacing of silk. At the neck is a standing collar, which is reversed at the top, and a rolling collar that meets the lapels in notches. The front edges of the fronts are faced for a few inches with the cheviot and are lined the rest of the way with silk. The free edges of the jacket fronts and belt sections, the lower edges of the cuffs and the front and lower edges of the tabs are trimmed with a row of gimp.

Tweed, diagonal serge, Bedford cord, plain serge, striped and checked cheviot, challis, India and China silk and novelty wool suitings will develop attractively by the mode, which is as well adapted



4430

Side-Front View.



4430

View Showing Round Length.

LADIES' PRINCESS DRESS, WITH DIAGONAL CLOSING, AND BELL BACK HAVING A SLIGHT TRAIN (PERFORATED FOR ROUND LENGTH). (COPYRIGHT.)

(For Description see Page 325.)

to a single material as to a combination of two or three fabrics.

We have pattern No. 4412 in thirteen sizes for ladies from twenty-eight to forty-six inches, bust measure. To make the costume for a lady of medium size, will require five yards and five-eighths of fancy cheviot forty-four inches wide, and two yards of plain silk twenty inches wide. Of one material, it needs twelve yards and a-fourth twenty-two inches wide, or eight yards and three-fourths thirty inches wide, or six yards and a-fourth forty-four inches wide, or six yards fifty inches wide. Price of pattern, 1s. 8d. or 40 cents.

LADIES' COSTUME, WITH BELL SKIRT, HAVING A VERY
SLIGHT TRAIN (PERFORATED FOR ROUND LENGTH).

(For Illustrations see Page 323.)

No. 4431.—By referring to figures Nos. 420 T and 421 T in this