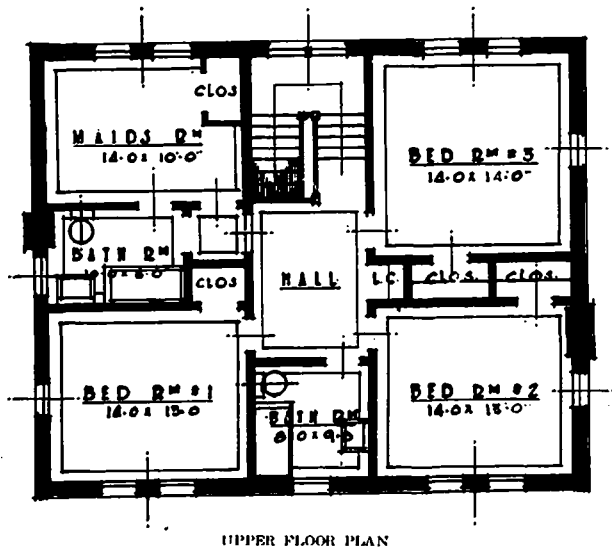
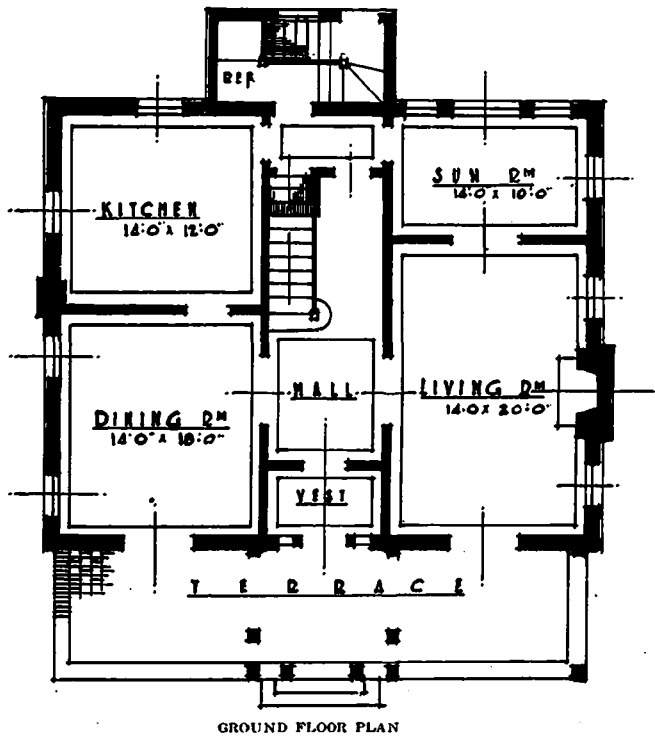




HOUSE OF EDWARD NEWELL, ESQ., TORONTO.  
HAROLD R. WATSON, ARCHITECT.



photographically an idea of the effect that the landscape work will have in a few years' time. The problem presented was that of placing four houses on a piece of land of very limited dimensions. It was felt by the architect that three houses would have been much more appropriate on the site. However, the plot plan shows an interesting solution of the problem, as well as the possibilities of a proper architectural and

LYNDHURST AVENUE DEVELOPMENT.  
As the houses in this development are not quite complete, it is somewhat difficult to give