

H. H. WILLIAMS

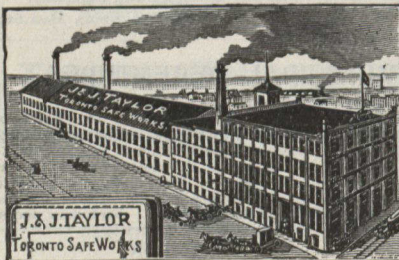
**REAL ESTATE
BROKER**

**10 Victoria St.,
TORONTO**

**TORONTO
ENGRAVING
CO 92 BAY ST**



Send for a copy of
"Some Thoughts on Advertising"
Published and distributed free
for the benefit of advertisers
generally, by The Monetary
Times, Toronto.



ESTABLISHED 1855
TAYLOR'S
DOUBLE TONGUE & GROOVE
SAFES
145
&
147 FRONT ST. EAST. TORONTO.



FAC-SIMILE OF
WHITE LABEL ALE

The Dominion Brewery Co.
LIMITED
**BREWERS AND MALTSTERS
TORONTO**

MANUFACTURERS OF THE

Celebrated **White
Label Ale**

Ask for it and see that our Brand is on every cork.
Our Ales and Porters have been ex-
amined by the best analysts, and they have
declared them Pure and Free from any Deleterious Ingredients.

WM. ROSS, Manager

RODGERS'

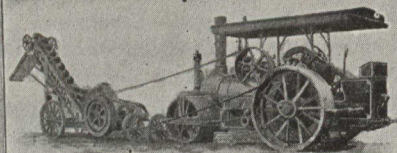
REGISTERED TRADE MARK

CUTLERY

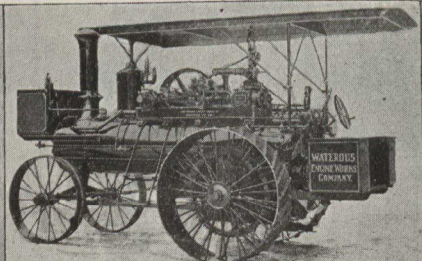


None Genuine wit

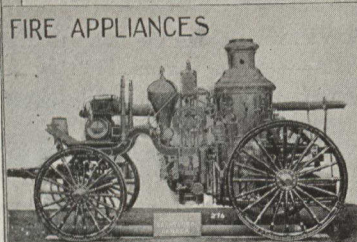
Exact Mark



ROAD MACHINERY
ROLLERS ROCK CRUSHERS
GRADERS & DUMP-CARTS.

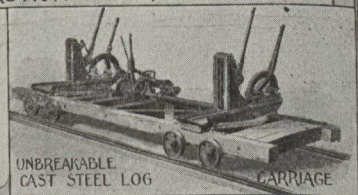


TRACTION DOUBLE CYLINDER ENGINES

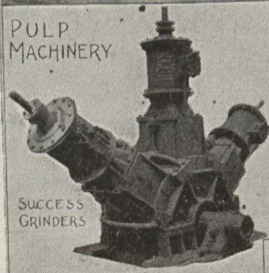


FIRE APPLIANCES

**1844
1901**



UNBREAKABLE CAST STEEL LOG CARRIAGE



PULP MACHINERY

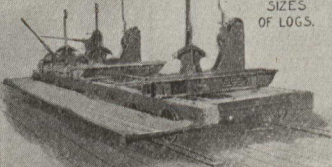
SUCCESS GRINDERS

WET MACHINES SCREENS E.T.S
BAND AND SAW CIRCULAR MILLS EXPORTED
LARGELY

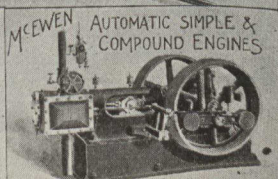


NEW FACTORY
BUILT IN 1895 SINCE THEN THE FOLLOWING EXTENSIONS HAVE BEEN MADE
MACHINE SHOP LENGTHENED 140 FT NOW 440 x 125
BOILER SHOP 100 FT NOW 220 x 60 1 WITH CORRESPONDING INCREASE
MOULDING SHOP 100 FT NOW 180 x 80 1 IN EQUIPMENT
BLACKSMITH SHOP 40 FT NOW 100 x 40 1 IN EQUIPMENT

UNBREAKABLE ROLLED STEEL CARRIAGES
SUITABLE FOR ALL SIZES OF LOGS.

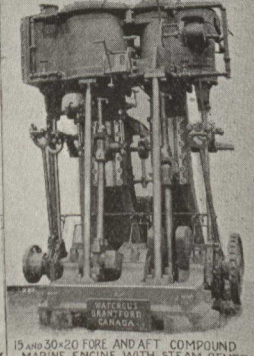


OUR LONG EXPERIENCE IN EXPORTING
MACHINERY IS A GUARANTEE THAT
SHIPMENTS WILL PROPERLY FILL
REQUIREMENTS AND ARRIVE IN
PERFECT CONDITION
PLANS FURNISHED AND SKILLED
MECHANICS PROCURED AT MODERATE
WAGES TO ERECT AND RUN OUR MACHINERY
FULL LINE OF WOODWORKING MACHINERY



McEWEN AUTOMATIC SIMPLE & COMPOUND ENGINES

SPECIALLY ADAPTED FOR DIRECT ELECTRIC WORK
MARINE ENGINES & BOILERS.



15 AND 30 x 20 HORSE AND AFT COMPOUND MARINE ENGINE WITH STEAM REVERSE

WATEROUS ENGINE WORKS COMPANY.

Brantford, Canada.