

**WE** intend this year to increase our already large clientele, and to do so will offer better value to physicians than ever. New lines are being constantly added to our stock, among others are the following:—

**HOLLAND'S ARCH INSTEP SUPPORTER (Original Pattern)  
for Flat Foot.**

**MARSH'S STETHOPHONES.**

**JENNER INSTITUTE GLYCERINATED CALF LYMPH.**

**SCHIMMELBUSCH'S STERILIZERS.**

**X RAY OUTFITS.**

**LEITZ'S MICROSCOPES (New Model).**

**THE GENUINE BAZZI-BIANCI PHONENDOSCOPE.**

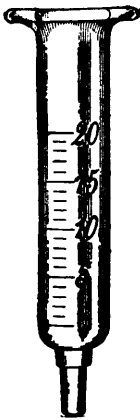
**ST. CYR'S UTERINE CURETTES.**

**ASPIRATORS IN ASEPTIC METAL CASES.**

**O'DWYER'S INTUBATION SETS IN ASEPTIC METAL CASES.**



Luer's Aseptic Syringe.



We have a large stock of  
**HOSPITAL GLASSWARE**

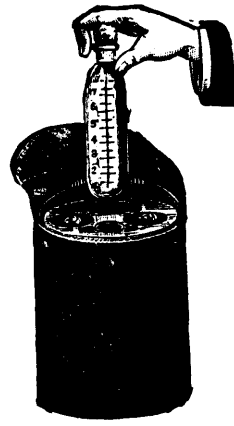
including

Catheter Jars,

Irrigators,

Glass Bowls,

Etc., Etc.



Food Warmer

**LYMAN SONS & Co.,**

**380-386 St. Paul Street, MONTREAL.**

**WRITE FOR OUR 1899 QUOTATIONS.**