

Miners Wanted

TO CHEW

PAY ROLL

Plug Tobacco

WANTED.

At the several collieries of the Dominion coal co. Limited, skilled coal miners and mine laborers.

Apply on the works Or by letter

Dominion Coal Company, Ltd

Genuine Garlock Packings

FOR ALL PURPOSES.

Pipe and Boiler Coverings, ENGINEERS SUPPLIES.

also

"Tauril" High Pressure Jointing
the Best Sheet Packing yet
Produced.

THE GARLOCK PACKING CO.
HAMILTON, ONTARIO.

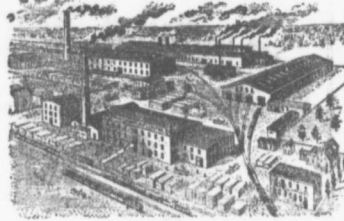
Used by Collieries in Lancashire, Staffordshire
& Yorkshire

'X TERRA' COLLIERIE LAMP OIL.

For Mince, Muscels, Ditcher or Chisel Lamp.

PURE WHITE FLAME. LOW PRICE
E. WOLASTON, Dutton St MANCHESTER

Sole Representatives for Canada, AUSSEN BROS,
114 WILKINSON ST. N. S.



—MANUFACTURERS OF—

RAILWAY
STREET and
MINING

CARS,

CAR WHEELS
FORGINGS &
CASTINGS

Church Pews,
Fittings for Stores, Schools, &
A SPECIALTY

Large Stocks of Foreign and Domestic Lumber on Sale.

Rhodes, BUILDING MATERIALS
GENERAL
Curry & co., Ltd.

Branch ROBBIE STREET,
HALIFAX, N. S.

AMHERST, N. S.

INTERCOLONIAL RAILWAY

On and after SUNDAY, OCT. 13 1907 trains
run daily, (Sundays excepted,) as follows:—

—TRAINS LEAVE STELLARTON—		
No 144 Mixed for Hopewell	5.55
No 79 Mixed for Trenton	6.30
79 Mixed for Hopewell	6.58
19 Express for Halifax, and St. John	7.40
21 Mixed for Pictou Landing	7.40
62 Mixed for Pictou	7.45
54 Mixed for Mulgrave	8.38
19 Express for Sydn y	11.10
22 Mixed for Pictou	11.12
56 Mixed for Truro	12.25
109 Mixed for New Glasgow	16.50
82 Express for the Sydney	16.50
39 Express for Halifax and Montreal	16.50
140 Mixed for Pictou	16.55
181 Mixed for Pictou Landing	16.48
22 Mixed for Howell	18.30
62 Mixed for New Glasgow	19.50
86 Express for Halifax and St. John	19.50
17 Express for New Glasgow	21.50
62 Express for Pictou	21.55

—TRAINS ARRIVE AT STELLARTON		
79 Mixed from Hopewell	5.30
79 Mixed from Trenton	6.55
21 Express from Pictou	7.25
19 Express from New Glasgow	7.38
21 Mixed from Hopewell	7.54
62 Mixed from Truro	8.05
56 Mixed from New Glasgow	10.55
97 Mixed from Pictou	10.55
62 Mixed from Mulgrave	12.38
19 Express from Halifax and St. John	12.50
182 Mixed from Pictou	16.40
82 Express from Halifax and St. John	16.40
39 Express from Sydney	16.50
21 Mixed from Pictou Landing	16.50
77 Mixed from Hopewell	16.48
62 Mixed from Pictou	18.30
62 Express from the Sydney	18.40
60 Express from New Glasgow	21.40
17 Express from St. John and Halifax	21.45

Trains are run by Atlantic Standard time. Twenty four
O'clock is mid-night. Montreal, N. S. OCT 13th, 1907
Night sleeping cars on trains 86 and 82 between Halifax
and Sydney. Pullman cars between Halifax and Mulgrave,
Judith Foster Car on trains 19 and 20 between Halifax and
Sydney. Dining cars between Mulgrave and Pictou.