

most part are fissures cutting across the formation in an easterly and westerly direction with a dip slightly to the south. Faults are frequently encountered, in nearly every case breaking towards the south. The ores in the central portion of the camp are all quartz or quartzites, and are free-milling and concentrating. About two miles due east, however, there have been found dyke rocks carrying good values in pyrrhotite, pyrites and chalcopyrite.

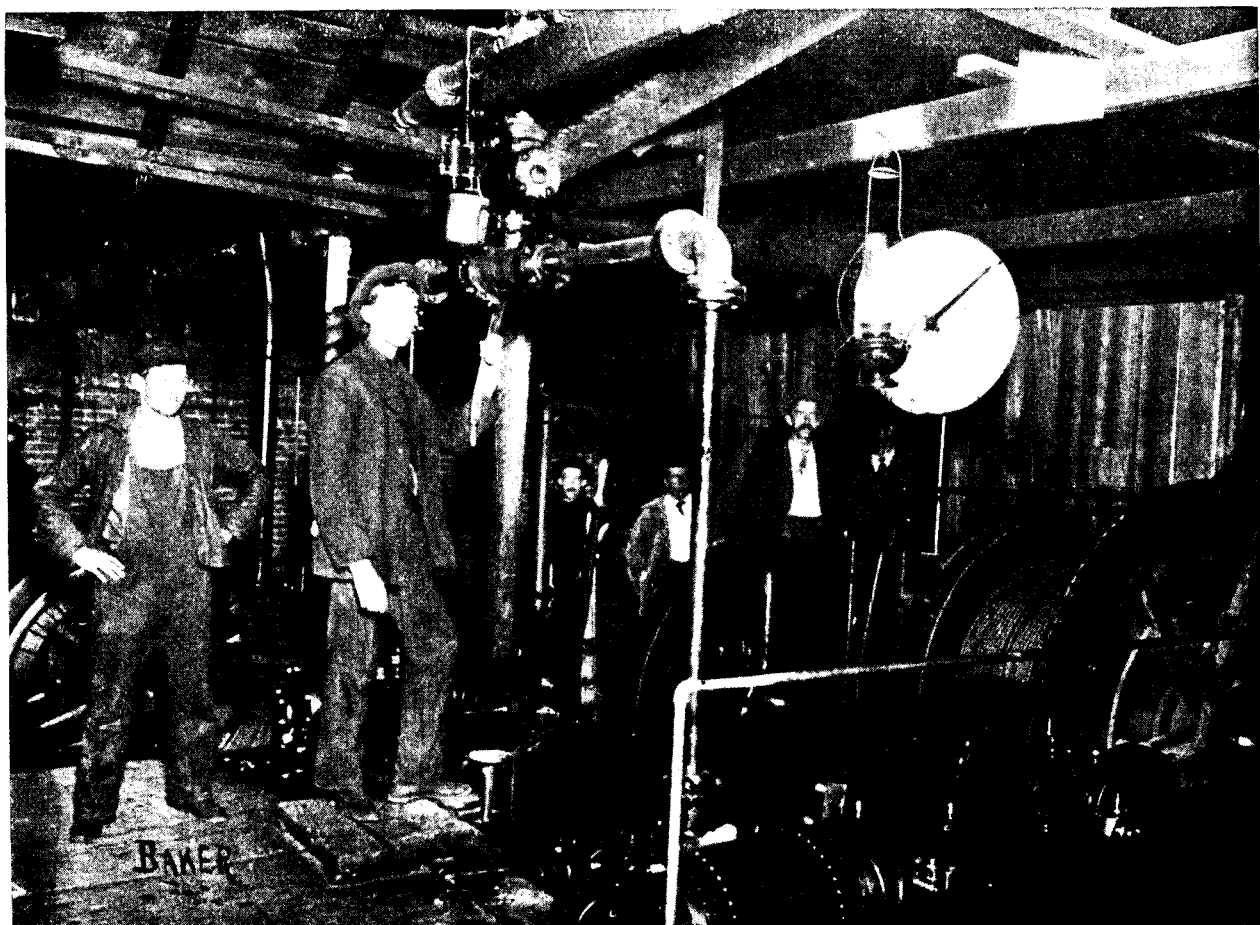
Of the principal properties the most important is the Cariboo, which is also the only free-milling gold mine among the comparative few discovered in the province to pay regular dividends. It is at present owned by the Cariboo-McKinney Mining and Milling Company, with head offices in Toronto.

The inauguration of development work took the

1,300 feet, and on No. 4 level 1,100 feet. In addition to this work there is an upraise from No. 2 to the surface 350 east of the shaft, three winzes from No. 4 to No. 3 and three from No. 3 to No. 2.

In the shaft house are two return tubular boilers, a 60 h.p. link motion hoist built by the Union Iron Works of San Francisco, and a 10-drill Rand compressor. The mill is situated in the Rice Creek gulch about 800 feet west of the shaft and is equipped with two five-stamp batteries supplied by the Risdon Iron Works, and the same number supplied by the Jenckes Machine Co. A 60 h.p. Corliss engine, two Johnstone vanners, a Wilfley table, one Blake crusher and one Gates crusher, complete the equipment.

The mill crushes on an average 1,400 tons per month, the result of the clean up for the month from



The Cariboo Hoist.

form of a tunnel driven in from the side of the Rice Creek gulch. Later on a shaft was sunk to connect with this tunnel. Another shaft was also sunk 200 feet to the east by the Butte and Boston Company, who in 1894-5 secured an option on the property. The present working shaft is on the Amelia claim 300 feet east of the Butte and Boston shaft, and is now driven 360 feet. The tunnel was continued in 700 feet and a connection with this shaft was made at a depth of 70 feet. No. 1 level is 128 feet down and here there are 350 feet of drifts, mostly towards the west. No. 2 level is 45 feet below No. 1, and from it is 1,000 feet of drifting. On No. 3 level, which is estimated at a depth of 258 feet the drifts aggregate

April 15th to May 15th having been a brick approximating \$20,000 in value. In addition the ore concentrates from three-quarters per cent., yielding \$1,500 net per month. The concentrates originally were sent for treatment to Everett (Wash.) smelter, but on the completion of the C. & W. Railroad their destination was changed to the Hall Mines smelter and at the present time to the Trail works.

The company own the Okanagan, Saw Tooth Fraction, Amelia, Cariboo, Alice, Emma and Maple Leaf, but have so far worked only one of the first four. In the past the Cariboo has paid its shareholders a dividend of one per cent. per month.

The vein has an east and west strike and dips