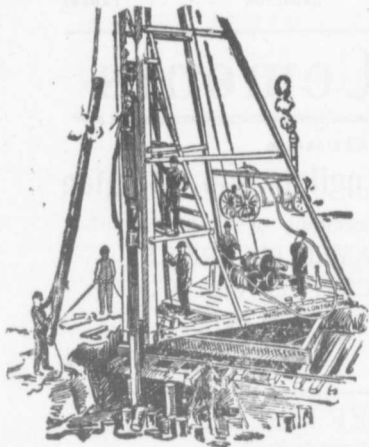


The Canadian Bridge Co., Limited

WALKERVILLE, ONT.

MANUFACTURERS OF **RAILWAY AND HIGHWAY BRIDGES**

Locomotive Turn Tables,
Roofs, Steel Buildings and
Structural Iron Work of all descriptions



PILE DRIVING

on land or water by Steam Pile Drivers or Drop Hammers.

**Portable Boilers
Hoisting Engines
Pumping Machinery**

TO LET

Bridge Building, Trestle Work, Wharves
Dams, Diving Submarine Work and
General Contracting.

WM. HOOD & SON
10 Richmond Sq. - MONTREAL

Surveying and Drawing Instruments

Best English Quality

Manufactured by

A. G. Thornton
Manchester, Eng.

Surveyors' and
Engineers' Supplies

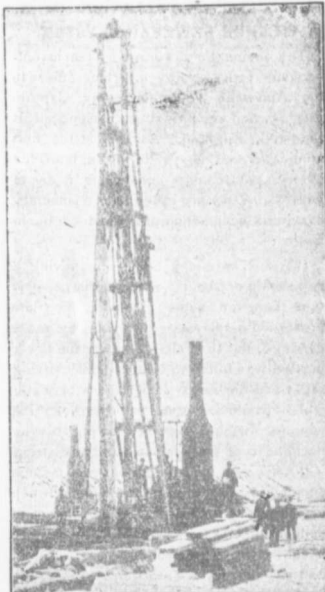
Write Us For Catalogue
and Prices <<<<<

5/6c

**C. H. MORTIMER
PUBLISHING CO.**

of Toronto, Limited
AGENTS FOR CANADA

Confederation Life Bldg., TORONTO
Alliance Building, MONTREAL



PILE DRIVING

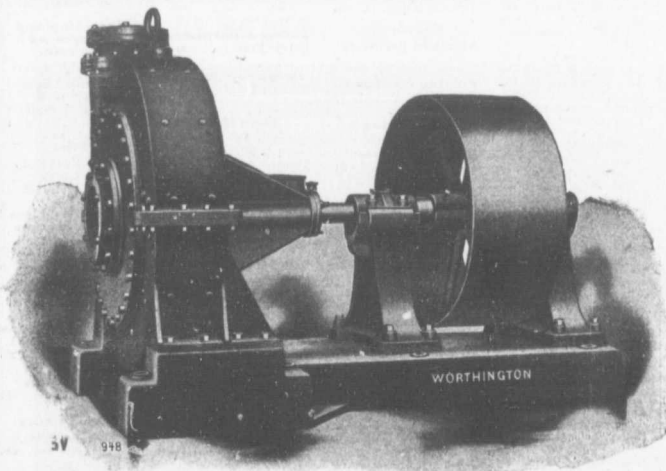
and Foundation Work.

By 5-ton Automatic Steam Pile Hammer,
Water Jet or Drop Hammers, Dock Building,
Submarine Work and Dredging.

BUILDING MOVER AND WRECKER
General Contracting.

JNO. E. RUSSELL, - Toronto
908 Queen St. E. - Phone M. 2007.

If you want to reach Municipalities advertise in the
CONTRACT RECORD.



TEN INCH TURBINE DREDGING PUMP.

With removable chrome-steel lining and manganese-steel impeller. Used for handling phosphate rock and for dredging purposes. Capacity 2,500 gallons per minute against 50 feet head.

**Pumps for
Water Works**

**Water Works
Systems Installed**

**Steam Boilers
and Filters**

*Builders in Canada for
Worthington Turbine
Pumps.*

**THE JOHN McDOUGALL
CALEDONIAN IRON WORKS**

**CO., LIMITED
Montreal, Que.**