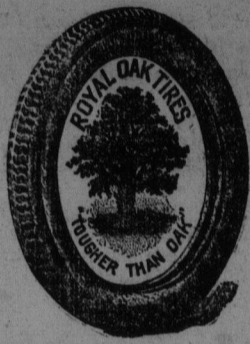


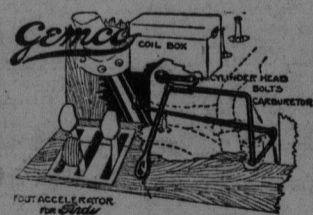
**ROYAL OAK
TIRES**

Motor Car Accessories

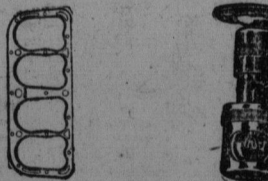
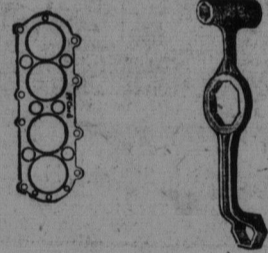
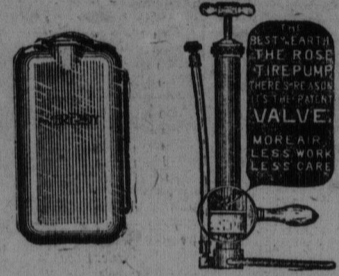


IN OVERHAULING YOUR CAR preparatory to the Summer season, bear in mind that our Automobile Accessory Department offers the largest and most complete line in the city. Only leading manufacturers are represented in our displays which embrace

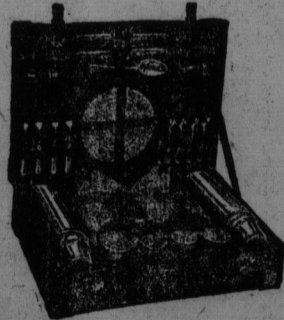
Royal Oak Tires Clover Leaf Tires
(Tougher Than Oak)
Goodyear Tires



- | | | |
|--|--|--|
| <p>Clover Leaf Tires "Non Skids same price as Plain Treads."
Royal Oak Tires tougher than oak.
Royal Grey and Red Inner Tubes.
Goodyear Fabric and Cords.
Goodyear Tubes regular and heavy tourist.
Dunlop Tires, fabric and cords and Tubes.
Dreadnought and Imperial Tire Chains.
Chains for Ford Ton Trucks and attachments.
Utility Rim Removers.
Emergency Mud Hooks.
Tire Repair and Saver Kits.
Vulcanizing and Patching Cement.
Cementless and Cement Patches.
Tire-Cut Filler and Putty.
Friction Tape.
Inside Protection and Rim Cut Patches.
Outside Blow-out and Hook-on Patches.
Tire Reliners.
Johnston's Hastle Patches.
Adamson Vulcanizers.
Tire Paint.
Hand Tire Pumps of all descriptions.
Auto and Truck Jacks.
Running Board Mats.
Auto Clocks.
Lunch Boxes.
Hand and Electric Horns.</p> | <p>Tool Boxes.
Luggage Carriers.
Resilient Spring Bumpers.
Search Lights and Tail Lights.
Auto Lamps and Lamp Boxes.
Storage and Dry Cell Battery Testers.
Champion and Hercules Spark Plugs.
Champion and Hercules Spark Plug Porcelains.
Spark Plug Cleaners.
Grease Guns.
Auto Soap.
Sponges.
Large Assortment of Chamols Skins.
Radiator Hose.
Radiator Cement.
Auto Polishes and Cleaners.
Johnson's Carbon Remover.
Johnson's Stop Squeak Oil.
Glidden Auto Finishes.
Garco Brake and Transmission Lining.
Howe Kork Tread Transmission Lining.
Cotter Pins and Cotter Pin Pullers.
Bolts, Nuts, Caps Screws and Taper Pins.
Wheel Pullers for Ford and Chevrolets.
Chevrolet and Ford Cylinder Head Gaskets.
Wire Wheels.</p> | <p>Large Assortment of Wrench Sets.
Auto Goggles.
Ford Speedometers.
Everready Flash Lights.
Lubricating Spring Covers.
Taps and Dies.
Tire Pressure Gauges.
Valve Insides.
Valve Repair Tools.
Chevrolet Cylinder Head Gaskets and Rimmers, articles for the Motorist.
Windshield Cleaners.
Fyroc Spark Plugs.
Tire Valves and Valve Parts.
Pump Connections.
Shaler's Five-Minute Vulcanizers.
Standley Adjustable Luggage Carriers.
Stewart Wire Wheels for Fords, Chevrolets and Overlands.
Columbia Hot Shot Batteries.
Dash and Trouble Lamps.
Cigar and Pipe Lighters.
Dashboard and Push and Pull Switches.
Lamp plugs and Sockets.
Rubber Running-board Mats.
Bearing and Carbon Scrapers.
Valve Grinders and refacers.
Double Seal Piston Rings.
Wonder-worker Specialties.
Burgess Shock Absorbers and Snubbers for Fords.
A Full stock of Oils and Grease.</p> |
|--|--|--|



Quality



Service

AUTOMOBILE ACCESSORY DEPARTMENT
Street Floor — Market Square Store

W. H. Thorne & Co., Limited

Store Hours: 8 a.m. to 6 p.m. Open Saturdays till 10 p.m.