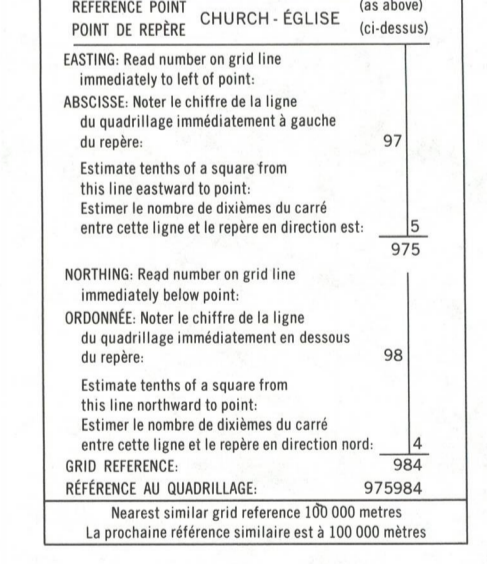
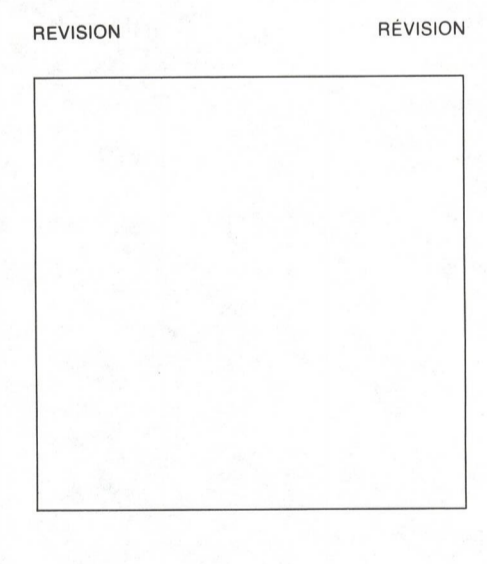
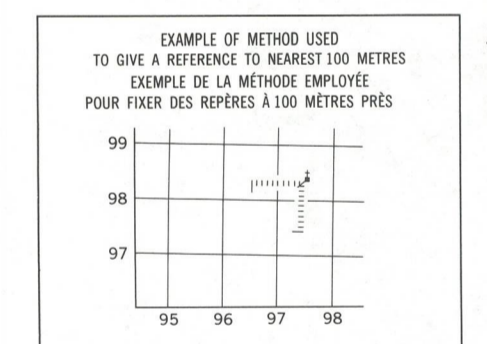
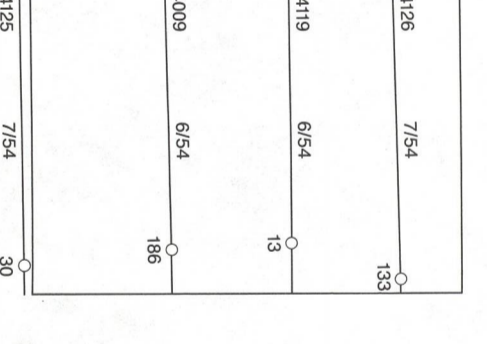
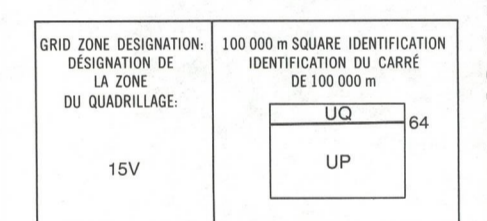
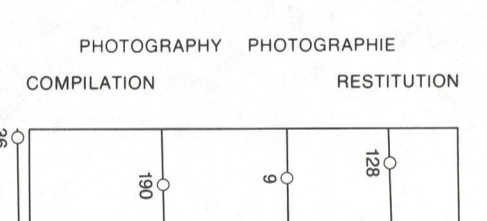
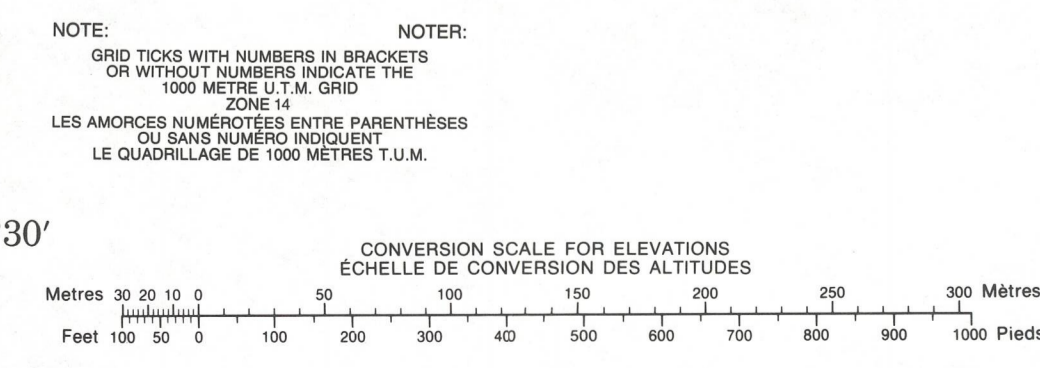




LEGEND - LÉGENDE. Table listing symbols for various features: ROAD, ROAD SURFACE, CANAL, TRAIL, BUILT-UP AREA, RAILWAY, BRIDGE, SEAPLANE BASE, HOUSE, CHURCH, TOWER, WELL, POWER TRANSMISSION LINE, MINE, CUTTING, INTERNATIONAL BOUNDARY, PROVINCIAL BOUNDARY, COUNTY BOUNDARY, TOWNSHIP BOUNDARY, MUNICIPALITY BOUNDARY, RESERVE, OUTLINED LANDMARK AREA, D.L.S. TOWNSHIP CORNER, D.L.S. SECTION CORNERS, HORIZONTAL CONTROL POINT, BENCH MARK WITH ELEVATION, SPOT ELEVATION, STREAM OR SHORELINE, LAKE, FLOODED LAND, MARSH, DRY RIVER BED, RAPIDS, FORESHORE, TUNDRA, PALSAS BOG, DAM, ICEFIELD, PINNO, DITCH, CONTOURS, APPROXIMATE CONTOURS, DEPRESSION CONTOUR, CLIFF, SPOT ELEVATION, ESKER, SAND, HISTORIC SITE, WOODED AREA.



ONE THOUSAND METRE UNIVERSAL TRANSVERSE MERCATOR GRID ZONE 15 QUADRILLAGE DE MILLE MÈTRES TRANSVERSE UNIVERSEL DE MERCATOR. Table with grid coordinates and magnetic bearing information.



PRODUCED BY THE SURVEYS AND MAPPING BRANCH, DEPARTMENT OF ENERGY, MINES AND RESOURCES, OTTAWA. COPIES MAY BE OBTAINED FROM THE CANADA MAP OFFICE, DEPARTMENT OF ENERGY, MINES AND RESOURCES, OTTAWA, OR YOUR NEAREST MAP DEALER.

ELEVATIONS IN METRES ABOVE MEAN SEA LEVEL. CONTOUR INTERVAL: 10 METRES. NORTH AMERICAN DATUM 1927. TRANSVERSE MERCATOR PROJECTION.

COMEAU LAKE MANITOBA. EAST OF PRINCIPAL MERIDIAN. EST DU MÉRIDIEN PRINCIPAL. Scale 1:50 000 Échelle. METRES 1000 0 1000 2000 3000 4000 METRES.

ALTITUDES EN MÈTRES. ÉQUIDISTANCE DES COURBES: 10 MÈTRES. SYSTEME DE RÉFÉRENCE GÉODÉSIQUE NORD-AMÉRICAIN 1927. PROJECTION TRANSVERSE DE MERCATOR.

ÉTABLI PAR LA DIRECTION DES LÈVES ET DE LA CARTOGRAPHIE, MINISTÈRE DE L'ÉNERGIE, DES MINES ET DES RESSOURCES, OTTAWA. LES CARTES SONT EN VENTE AU BUREAU DES CARTES DU CANADA, MINISTÈRE DE L'ÉNERGIE, DES MINES ET DES RESSOURCES, OTTAWA, OU CHEZ LE VENDOR LE PLUS PRÈS.