

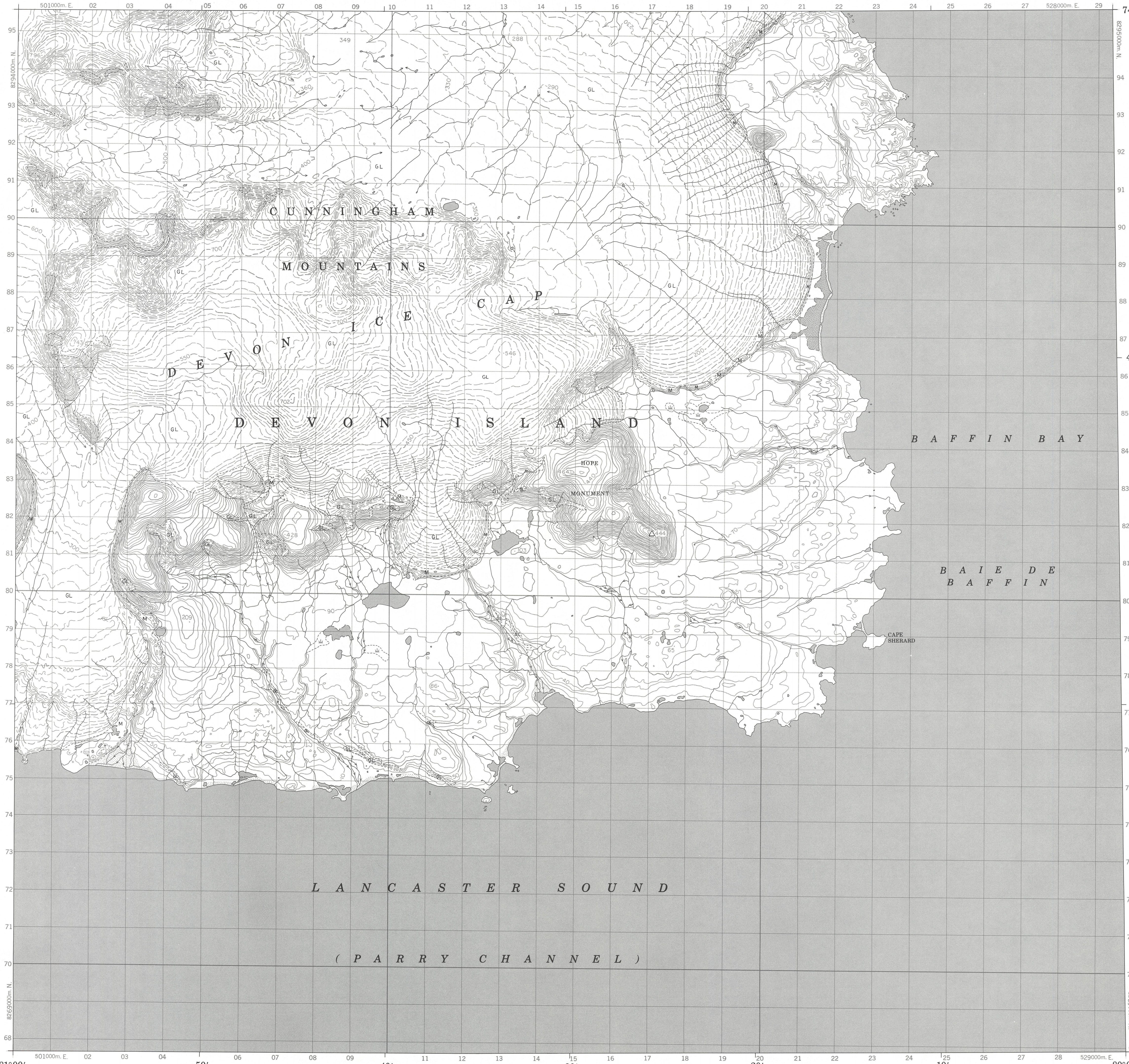
Military users, refer to this map as: SÉRIE A 701 SÉRIE MAP 48 E/9 CARTE Références de cette carte pour usage militaire: ÉDITION 1 M.C.E. ÉDITION

LEGEND - LÉGENDE

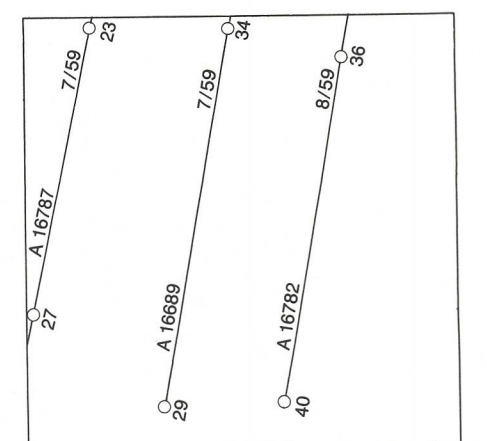
Table with 2 columns: English and French descriptions of map symbols. Includes categories like ROAD, RAILWAY, POWER TRANSMISSION LINE, and various landmarks.

METRIC/MÉTRIQUE

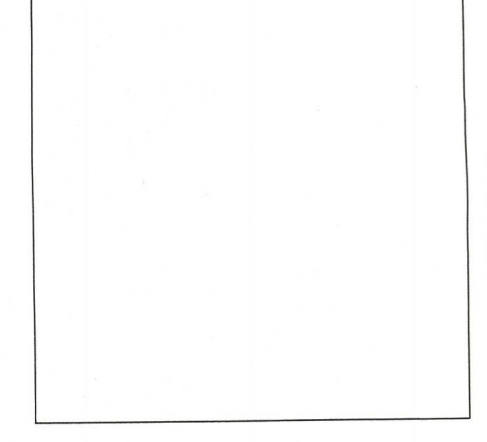
METRIC/MÉTRIQUE



PHOTOGRAPHY COMPILATION

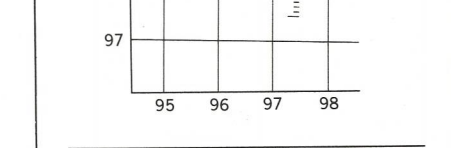


REVISION



GRID ZONE DESIGNATION 17X

EXAMPLE OF METHOD USED TO FIX REFERENCE POINTS



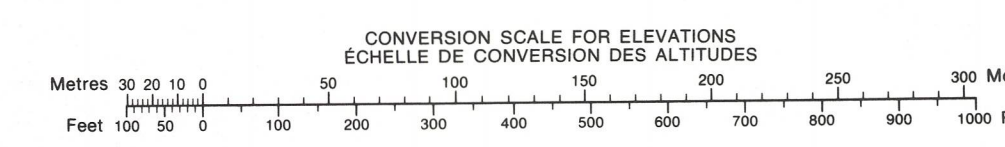
REFERENCE POINT CHURCH - EGLISE (see above) POINT DE RÉFÉRENCE ÉGLISE (voir ci-dessus) EASTING: Read number on grid line immediately to left of point. NORTHING: Read number on grid line immediately below point.

ONE THOUSAND METRE UNIVERSAL TRANSVERSE MERCATOR GRID ZONE 17

Table showing grid coordinates: 48 E/15, 48 E/16, 38 F/13, 48 E/10 & 48 E/9.

The 1984 MAGNETIC BEARING is 71°12' (1286 mils) WEST OF GRID NORTH. ANNUAL CHANGE DECREASING 43.6°

THE MAGNETIC COMPASS IS LIKELY TO BE USELESS IN THIS AREA. LA BOUSSOLE SE RA PROBABLEMENT INUTILE DANS CETTE RÉGION.



PRODUCED BY THE SURVEYS AND MAPPING BRANCH, DEPARTMENT OF ENERGY, MINES AND RESOURCES, OTTAWA, PUBLISHED IN 1984.

ELEVATIONS IN METRES ABOVE MEAN SEA LEVEL. CONTOUR INTERVAL: 10 METRES. NORTH AMERICAN DATUM 1927.

HOPE MONUMENT. DISTRICT OF FRANKLIN. NORTHWEST TERRITORIES. Scale 1:50 000 Échelle.

ALTITUDES EN MÈTRES. ÉQUIDISTANCE DES COURBES: 10 MÈTRES. SYSTÈME DE RÉFÉRENCE GÉODÉSIQUE NORD-AMÉRICAIN 1927.

ÉTABLI PAR LA DIRECTION DES LÈVES ET DE LA CARTOGRAPHIE, MINISTÈRE DE L'ÉNERGIE, DES MINES ET DES RESSOURCES, OTTAWA, PUBLIÉ EN 1984.

HOPE MONUMENT 48 E/9 EDITION 1

