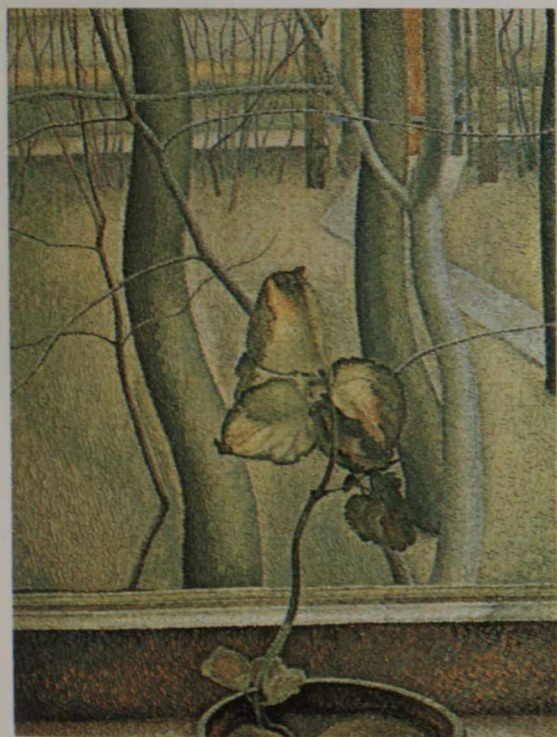


twenty years, he became one of Canada's most popular and most financially successful artists. He had technical brilliance and the best of his sketches are consummately designed and richly painted. His 1918 paintings of Algoma are associated with The Group and these tangles of branches, evergreens and foliage, are, in the words of Paul Duval, "as compelling as anything done at that time."

EDWIN HOLGATE joined The Group of Seven in 1931, when he had already established a fine reputation. He, like Varley, was as interested in people as in landscapes and he is best known



EDWIN HOLGATE, *Nude*, 1930
29 x 26, Art Gallery of Ontario

A. J. CASSON, *Kleinburg*, 1921
12 x 10, The McMichael Canadian Collection

J. E. H. MACDONALD, *Algoma Waterfall*, 1920
35 x 30, The McMichael Canadian Collection

LEMOINE FITZGERALD, *The Little Plant*, 1947
18¼ x 24, The McMichael Canadian Collection