

AN article by General Sheridan, called "Gravelotte to Sedan," which will appear in the November *Scribner*, is the only paper ever written by him for a periodical.

MR. JAMES PAYN is described as a square-headed, broad-browed, spectacled man, more like a prosperous physician than an author. He is now almost sixty years old.

BEFORE his death the late E. P. Roe had arranged with Messrs. Ward, Lock and Company, of London, to issue in England a library edition of the whole of his works.

SIR EDWIN ARNOLD has made a selection of his national and non-Oriental poems, which, with the addition of some new verse, has been recently published by Trübner and Company.

A PRIZE of 3,000 francs has been offered in France, to be given every three years, to the author of the best work on North American history, geography, archaeology, ethnology, languages or numismatics.

THE August number of *The Book Buyer* comes to us in its usual attractive form, with a portrait of William Black, and a short but satisfactory account of Mr. Edward Bellamy, the author of "Looking Backward."

To the September *Forum* (which begins the sixth volume) the Marquis of Lorne will contribute a study of the Government of the United States, the result of his observations while he was Governor-General of Canada.

IN the August *Homiletic Review*, Dr. Howard Crosby has a vigorous paper in which he answers the inquiry, "Should Questions at issue between Political Parties be discussed in the Pulpit?" with a ringing "No, never!"

THE advertisement of a book sale recently contained the following: "And included in this sale is an accumulation of recent books, mostly with the edges unopened, as published, the property of a well-known critic."

THE Sociedade de Geographia de Rio de Janeiro proposes to hold in September an exposition of geographical works relating to South America, for which the co-operation of nearly all the South American States has already been promised.

FRANK MURRAY will publish in the autumn "Ballades of a Country Bookworm," dedicated by the author, Thomas Hutchinson, to Andrew Lang. The edition will be printed on hand-made paper, and limited to a small number of copies.

"ROBERT ELSMERE" continues one of the most successful books ever put upon the London market. The *Athenaeum* says that, when issued in a single volume, the whole edition of 5,000 copies was taken by the trade before the day of issue.

MISS ELLA BAKER, the author of "Bertram de Drumont," "Songs of the Season," "Stories from Old History," and "The Sovereigns of England," was recently stung by a bee, and died afterwards from its effects. She was but twenty-nine years old.

A WRITER in the *Pall Mall Gazette* says: "I hear on good authority that the *Saturday Review* is in the market, and that an entire metamorphosis of that journal is not improbable. It is an open secret that its circulation has greatly fallen off of late years."

THE reader of early biographical literature cannot help being impressed with the fact that most British men of letters before the close of the Georgian era were chronicled as being the father of something. Chaucer was the father of English poetry, Walton the father of angling, Richardson the father of the British novel, Steel the father of the British essay, and now comes a Scottish bookseller who figures as the father of the circulating library.

A FUND is being raised for that literary veteran, Dr. Charles Mackay, who is both in reduced circumstances and in broken health. If every one who has enjoyed Dr. Mackay's songs—"Cheer, Boys," and the rest of them—would contribute his mite, the sum necessary for ensuring the comfort of the aged writer would quickly be forthcoming. The treasurer of the fund is Dr. L. C. Alexander, Holly Lodge, Putney, England. Though most widely known for his songs, Dr. Mackay has in his time been one of the most versatile and industrious of workers in journalism, as well as in philology and literature.

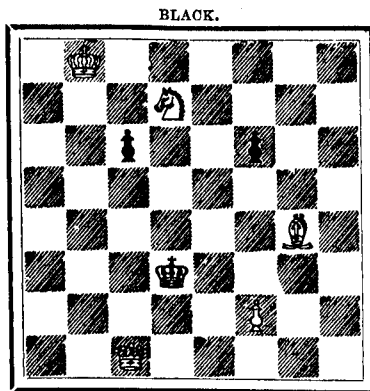
TORONTO COLLEGE OF MUSIC.—The establishment in Toronto of a new educational institution is always a feature of progress, but when a school on the basis of Mr. Torrington's College of Music is projected and placed before the public, it marks an epoch in the artistic history of our city. Mr. Torrington has, during his fifteen years residence in Toronto, made himself rather more than a mere factor in musical matters. His irrepressible energy and enthusiasm have carried music forward when everything looked as if there were nothing to carry forward and no one to do the carrying, and from these darkest clouds has sprung great light. A long experience in teaching, always attended with success, a splendid staff of assistants, a systematic plan of work, and unusual facilities for the study of all the practical departments of music, combine to give the College the brightest promises of success. It opens in September next, in its new building, Nos. 12 and 14 Pembroke Street, which will contain a number of class rooms and a large music room, in which is erected a fine three-manual pipe organ. Particular attention will be paid to the orchestral department, in which advanced students will have the advantage of practice in Mr. Torrington's orchestra.

TORONTO CONSERVATORY OF MUSIC.—The academical year of the Toronto Conservatory of Music will open on Wednesday, 5th September next, and the directors of that institution have provided generously for the necessities of pupils, of whom 1,000 are expected to be in attendance in the course of the season. The array of teachers, including those for the piano, voice, organ, violin, orchestral and band instruments, public school music, church music and oratorio, harmony, elocution and dramatic action, comprises a faculty of exceptional strength and rivalling those of the most famous schools of music in America. Mr. Edward Fisher, the musical director, has been in England during the summer holidays on important matters in connection with the Conservatory, and among others being the engagement of a noted violoncello virtuoso. Those who are interested in matters of musical education in Canada have long desired a place where the benefits peculiar to Conservatory methods could be obtained upon principles similar to those employed abroad. The Toronto Conservatory of Music has been found, upon investigation, to possess every advantage claimed for it. It is reliable and well managed, and now leads the van of musical education in Canada. Those of our readers desiring fuller information regarding the institution should send for a copy of its calendar, addressing Mr. Edward Fisher, Director, Conservatory of Music, Toronto.

# CHESS.

## PROBLEM No. 281.

From *Illustrative Zeitung*.

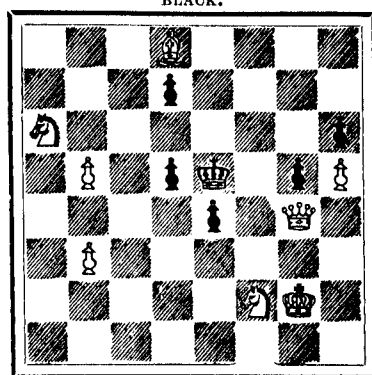


White to play and mate in three moves.

## PROBLEM No. 282.

By W. S. PAVITT.

From *Vanity Fair*.



White to play and mate in three moves.

## SOLUTIONS TO PROBLEMS.

- No. 275.
- |                |           |
|----------------|-----------|
| White.         | Black.    |
| 1. Kt-Q 2      | 1. K x R  |
| 2. Kt-B 3      | 2. K x Kt |
| 3. Q-Q 3 mate. |           |
- If 1. P-B 6  
2. Q-B 4 +  
3. Q-B 6 mate.
- With other variations.

- No. 276.
- |        |
|--------|
| White. |
| Kt-Q 6 |

## GAME PLAYED IN THE MANHATTAN COLUMBIA TEAM MATCH.

From *Columbia Chess Chronicle*.

RUY LOPEZ.

H. DAVIDSON.	L. STERNBERG.	H. DAVIDSON.	L. STERNBERG.
White.	Black.	White.	Black.
1. P-K 4	P-K 4	21. Q-Kt 4	Q-K B 1
2. Kt-K B 3	Kt-Q B 3	22. Kt-Kt 3	Q-B 3
3. B-Kt 5	P-Q R 3	23. B-Q 2	B x Kt P (a)
4. B-R 4	B-B 4	24. P x B	Q-Q 5 +
5. Castles	P-Q 3	25. K-R 1	Q x B
6. P-Q 4	P x P	26. Q R-K 1	Q x Kt P
7. B x Kt +	P x B	27. Q-Q 7	Kt-Kt 1
8. Kt x P	Q-Q 2	28. Kt-B 5	R-Kt 3
9. Kt-B 3	Kt-K 2	29. Q x P at B 7	R-K B 1
10. Q Kt-K 2	Castles	30. Q-K 5	Kt-B 3 (b)
11. P-Q B 3	P-B 4	31. Kt-Kt 7	R-R 3
12. Q-Kt 3 +	K-R 1	32. Kt x P	Q-Kt 3 (c)
13. Kt-K 6	B x Kt	33. Q-K 7	R-B 1
14. Q x B	R-B 3	34. Kt-K 5	R-R 4
15. Q-B 4	P x P	35. R-Q Kt 1	Q-B 2
16. Q x P	R-Kt 3	36. Q x Q	R x Q
17. Q-K Kt 4	P-Q 4	37. R-Kt 8 +	Kt-Kt 1
18. Q-R 3	R-Kt 1	38. R-Q 8	R-K B 4
19. P-Q Kt 4	B-Q 3	39. P-Kt 4	R-B 3
20. P-K B 4	R-R 3		

At this point the game was adjudicated against Mr. Sternberg

## NOTES.

- (a) A pretty combination which ought to have won.  
(b) A feeble move which loses a P immediately. Q-Kt 1, forcing the exchange of Queens, would have left him with a won game.  
(c) Intending R x P + etc., but this transparent trap loses his game. Q-Kt 2 was his play.

ALMA LADIES' COLLEGE, ST. THOMAS, ONTARIO.—Nearly 200 students in 1888. Sixteen graduates and certified teachers in the faculty. Total expenses from \$40 to \$60 per term, or from \$150 to \$250 per year in advance, including Music and Fine Arts. Half the Music and Art graduates of this school are now employed as teachers in other colleges. Address, B. F. Austin, Principal.

SPECIAL HARVEST EXCURSIONS.—The Northern Pacific R. R. announces a series of five special Harvest Excursions from St. Paul, Minneapolis, Duluth and Ashland to principal points in Minnesota, Dakota and Montana during August, September and October. Parties contemplating a trip for pleasure, business, or with a view of selecting a new home, can avail themselves of rates lower than ever before announced to visit the wonderful country tributary to the Northern Pacific R. R. Tickets will be on sale at St. Paul, Minneapolis, Duluth, and Ashland on August 21st, September 11th and 25th, and October 9th and 23rd, limited to thirty days from date of sale, and good for stop-over on going passage. These rates to Montana points are about one cent per mile each way, and in some cases about half of the one way for the round trip. Connecting lines east and south of St. Paul, Minneapolis and Duluth will sell tickets in connection with these excursions at one fare for the round trip. The dates named will be a very opportune time to visit the wheat fields of Minnesota and North Dakota; also to see the cattle ranges of Montana. Everybody should bear in mind that the Northern Pacific R. R. is the short and direct line to principal points in Montana, and the only line running either dining cars, Pullman sleeping cars, or colonist sleeping cars to Fargo, Grand Forks, Fergus Falls, Wahpeton, Jamestown, Helena, and principal points in North Dakota and Montana. For rates and other information apply to Chas. S. Fee, General Passenger and Ticket Agent, St. Paul, Minn., or nearest Ticket Agent.