

CHESS.

TO CORRESPONDENTS.

F. T. J., Toronto.—Your communication received with thanks. Your problem appears below.

PHILO.—They shall be examined. What is the objection to the names of the players appearing?

J. G. D., Kingston.—A reply has been forwarded by post.

A CODGER.—The proper move in the position sent is P. to Q. B. 4th.

SOLUTION TO PROBLEM No. 3, by "Brampton Chess Club." "Clara," and "F. T. J." are correct: all others are wrong.

SOLUTION TO PROBLEM No. 2.

WHITE.

1 Kt. to K. 4 ch.

2 P. or Q. mates.

BLACK.

R. takes Kt. or K. moves.

SOLUTION TO PROBLEM No. 3.

WHITE.

1 Q. to Q. Kt. 6

2 P. to Q. B. 4

3 Q. to K. Kt. 6 mate.

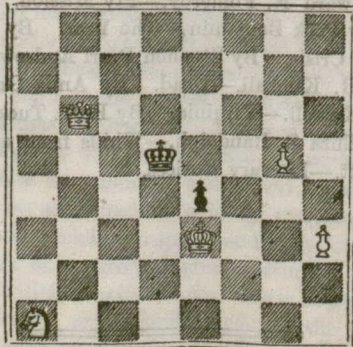
BLACK.

K. to K. 5

K. to K. B. 4

PROBLEM No. 4.—By F. T. J. OF TORONTO.

BLACK.



WHITE.

White to play, and mate in three moves.