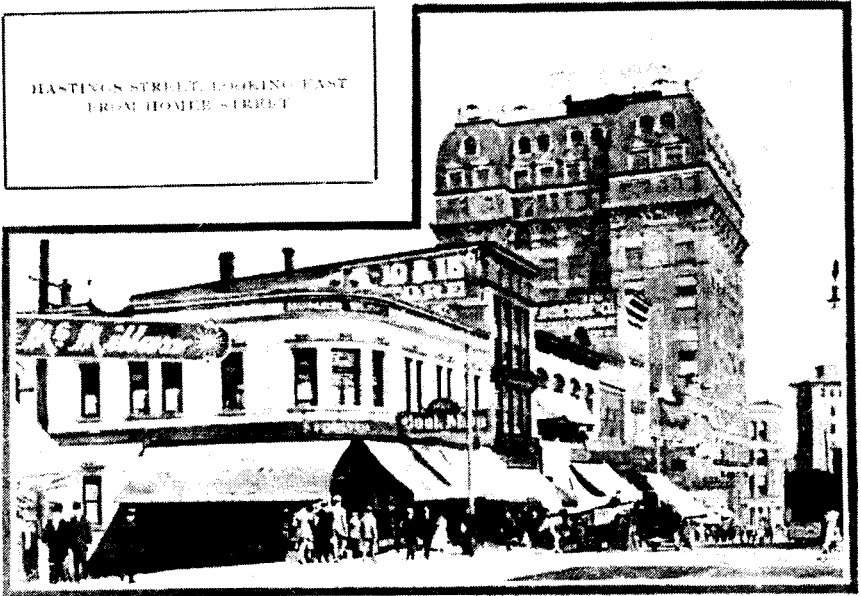


HASTINGS STREET, LOOKING EAST  
FROM HOMER STREET



will ever include the city of New Westminster or not, the two cities will be parts of the same community—they are now, in fact, one in the matter of communication—and the interests they have in common very much exceed in importance and value those in which they may be said to be rivals.

In the meantime they both are prosperous, and the prosperity of the one is not inimical to that of the other. One thing seems certain: the new enterprises already inaugurated and those soon to be established are of such dimensions and character that all the accommodation available in the whole of the section in question will be required for the development sure to follow.

This whole section from Burrard Inlet to the Fraser is particularly well adapted for the site of a mammoth city. It possesses miles of sheltered harbors, whose shores afford splendid facilities for docks, elevators and warehouses, and furnish ideal conditions for factory sites. Burrard Inlet, both sides—False Creek and North Arm of the Fraser have low-lying shores—and on the greater part of the mileage involved railway lines are already in operation. In another place will be found a map designed to give an adequate idea of this factor in Vancouver's prosperity.

**RESIDENTIAL VANCOUVER**—Its qualities from a residence standpoint are not less admirable. The surface slopes gradually up from the shores of Burrard Inlet, English Bay and False Creek, and on the upper levels are the residential sections. Few houses are far from salt water, and by far the greater number of them have outlook upon scenery of sea and mountain that is enjoyed by few cities in the world. The soil and climate are conducive to vegetation, which is everywhere abundant about the city. The lawns are always green—the fall flowers keep in evidence late into the winter, and early in February the spring blossoms make their appearance.

The domestic water supply is plentiful and of good quality, and the lay of the land forming the townsite is favorable to effective sewerage systems. As a consequence the city is remarkably free from epidemics caused by defective drainage or impure water.

**LOCATION**—Not only is the site of Vancouver suited to the requirements of a great city: it is also in the right place, for, among other things, it is situated at the