

NIobe IN THE CLOUDS.

[Suggested by a spell of rainy weather at the South, unparalleled in severity and duration.]

A voice of anguish in the courts of air! Some cloud-born Niobe, by night and day, Strives the drear burden of her long despair To weep and weep, but vainly weep away!

Hast thou, ethereal Mourner! lost thine All, (Whate'er that All of life or love may be.) That thus from yonder mist, unwoven fall, Thou rainest down thy woe on earth and sea?

Ah! Earth replies . . . her sympathetic breast Touched to sad murmuring through her woodlands lone, While the mystery of the Heaven's unrest, Wild wave and wandering wind responsive, moan!

Yet, shall thy tears be measureless? . . . Beware!— Lost nature, worn by iterance thus forlorn, Rouse the red Lightning from its lurid hair, To blast thee with the fervors of her scorn!— PAUL HAMILTON HAYNE.

FOOT NOTES.

A HORRIBLE murder in a railway carriage on the London and Brighton line is creating a sensation in England.

HOLT White's death has not been thought worth a paragraph, yet, he was no common man, and had seen no common things. As the correspondent of the New York Tribune in the Franco-German war, he stood on the hill of Frenois with the German King, when the flag of truce, and Napoleon's letter came to that monarch up from out of the pandemonium of Sedan. The white rag that was the flag fell into White's hands. Grasping the splendour of his chance, he took his life in his hand and started across the reeking battlefield for the frontier and freedom to telegraph in Belgium.

When he reached the telegraph office in Brussels, the day after the battle, the people there gave him the pleasant alternative of being considered either a raving lunatic or a knave trying to influence the European Bourses by false news, and refused to forward his intelligence. So he came on to England; and not many who read it can have forgotten the brief lurid story of the battle from his pen which the Pall Mall Gazette printed on the evening but one after it was fought.

Later he was present in Paris on journalistic duty during the whole of the Commune. He and Archibald Forbes were with Dombrowsky in the Château de la Muette on that Sunday afternoon where the Versailles came streaming over the Communist defences; and these two journalists, when, later in the same evening, Dombrowsky was wounded near the gate of St-Cloud, dragged him out of the mêlée, and saved his life for the time.

CHILDHOOD.—The qualities that are the most attractive in childhood are not by any means the most valuable in maturity. We look for determination, will, decision of character, firmness in the man, and refuse him our respect if he have them not. But, when the child exhibits these qualities, even in their incipient stages, we are annoyed and perhaps repulsed. Instead of rejoicing in his strength of will and guiding it into right channels, we lament it as a grievous fault in him, and a misfortune to us. It is the meek and yielding child who cares not to decide anything for himself in whom we delight, and whose feeble will we make still feebler by denying it all exercise. Yet, when he grows up and enters the world and yields to temptation, and perhaps disgraces himself and his family, we look at him in imbecile wonder that so good a child should have turned out to be so bad a man, when in truth, his course has been only the natural outcome of his past life and training.

OUR CHESS COLUMN.

Solutions to Problems sent in by correspondents will be duly acknowledged.

TO CORRESPONDENTS.

J. W. S., Montreal.—Papers to hand. Thanks. Student, Montreal.—Correct solution received of Problem No. 325.

We have received the following letter, which is in the form of a circular, and hasten to publish it. We suppose the tourney is open to all comers, and as this is the time for holiday trips, some of our Canadian players may make it convenient to be present at the gathering at Buffalo. The meeting shows the lively interest taken by our American friends in the noble game, and we are sure it will be a very enjoyable re-union. The arrangements for the Tourney will give all players a chance of taking part in the contests, and should any members of our Canadian clubs do so, we feel certain that they will do all in their power to show that chess is not neglected in the Dominion.

Dear Sir: Buffalo, N.Y., June 15, 1881.

The Annual Tournament of the Central and Western New York and Central and Western Pennsylvania Chess Association will take place in this city in the second week in July. A meeting will be held on Monday evening, the 11th inst., at the City Club, to arrange the different classes in which the respective players are to be placed. Play in the Tournament to commence Monday night or Tuesday morning. It is proposed to divide the players in the Tournament into four classes, the players in each class to play a certain number of games, with every other player in the same class, the winner of the most games in the first class to be considered the champion of the association for the coming year. The winner in each class to play with the winner in the other classes two or more games at the following odds: first class to give the second class the odds of P and move; the third class, P and two moves; the fourth class, the odds of the Kt. The second class to give the third class P and move, and the fourth class P and two moves. The third class to give the fourth class P and move. The winner of the most games to be the winner of the Handicap Tournament.

The City Club have generously tendered to the Association their spacious and elegant card-room for the Tournament. A large number of the leading players of Western New York have already signified their intention of entering the lists. The committee have also received information from leading chess players in Pennsylvania that that State will be represented. We feel safe, therefore, in stating that there is every prospect of a very enjoyable chess re-union. We trust that you will be able to be present. Please advise the Secretary as soon as possible if you intend to take part in the Tournament.

JOHN COSTELLO, President.

H. A. RICHMOND, Secretary.

The Pittsburgh Telegraph thinks that for the benefit of the chess fraternity of the United States each chess publication should devote a short space at the head of the column to a general chess directory of the country, so that when chess players travel they can visit the chess resorts of the cities in which they happen to be sojourning. The same argument holds good on this side of the Atlantic.—Chessplayers' Chronicle.

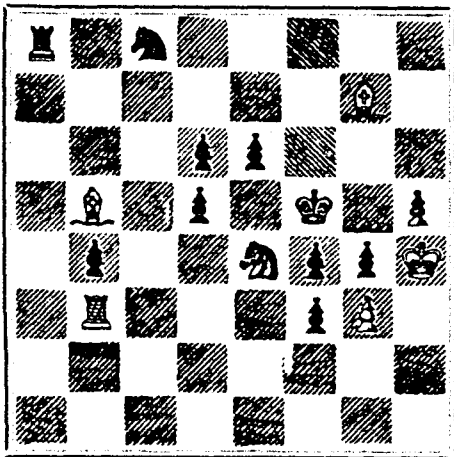
The fourth game in the match between Messrs. Clerc and de Riviere was won by M. Clerc in 21 moves, M. de Riviere having adopted the French defence. The fifth game, a Ruy Lopez, was also lost by M. de R. through a fatal blunder committed on his 39th move. The score now is: Clerc, 3; de Riviere, 1; Drawn, 1.

In the recent amateur tournament at Leghorn, the first prize was won by Prof. Lelio Ascoli, the second by Sig. Emilio Orsini, and the third by Sig. G. Mureno.—Turf, Field and Farm.

PROBLEM No. 337

By A. Beck.

BLACK.



WHITE.

White to play and mate in three moves.

GAME 464th.

(From the Glasgow Herald.)

The following rather curious game occurred in the contest for the West of Scotland Challenge Cup.

(Queen's Gambit.)

White.—(Mr. Jenkin.) Black.—(Mr. Mills.)

- 1. P to Q 4 2. P to Q B 4 3. P to K 3 4. B takes P 5. P takes P 6. Q to Q Kt 3 7. Kt to K 2 8. Q Kt to Q B 3 9. B takes Q

This move is the cause of all Black's subsequent troubles. B to K 2 would have been better.

10. B to K Kt 5

The correct move, of course, White now obtains a hold which he retains to the end.]

11. P to K B 4 10. Q Kt to Q 2

In order to prevent the Bishop being forced away by P to K R 3 and P to K Kt 4.

12. Castles (K side) 11. P to Q R 3 12. Castles

If the K R and Kt Pawns be now advanced, White retires the B to Kt 3.

- 13. Kt to K Kt 3 14. B to K R 4 15. Q Kt to K 4 16. Kt takes Kt 17. B to Q 5 18. P to Q R 3 19. B to Q B 6

It is evident that Black can play neither the Rook nor the Kt to Kt 3.

20. Q R to Q sq 21. Kt to Q B 3 22. Kt to Q 5

Threatening to break up the Pawns on the K side.

- 23. B takes Kt (ch) 24. B to K 7 25. K R to K sq

B to Q 2 would have been better.

- 26. B to K B 7 27. R to K 6 28. B to K Kt 4 (ch) 29. P to K Kt 4

We believe this is the only move to maintain the advantage.

- 30. R to Q 2 31. R to K 3 32. K Kt P takes P 33. K R to K Kt 5 34. R to K Kt 3 35. Q R to Q 3 36. P to K B 6 37. R takes B 38. Q R to K Kt 3

This is quite safe. The adverse B can now be allowed into the game without danger.

- 39. K to B sq 40. R takes P (ch) 41. R takes R (ch) 42. P to K B 7 43. R to K Kt 3

And White wins.

SOLUTIONS

Solution of Problem No. 325.

- 1. R to Q R 6 2. Mates acc.

1. Any.

Solution of Problem for Young Players No. 333.

- WHITE. 1. B to Q B 5 2. R to Q Kt 7 3. Kt mates.

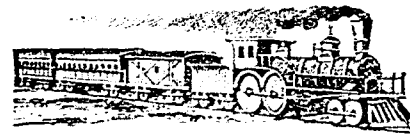
BLACK. 1. Kt P moves 2. Kt moves

PROBLEM FOR YOUNG PLAYERS, No. 337.

White. Black.

- K at K 2 Q at K 8 Kt at K B 4 Kt at K B 5 Pawns at K Kt 2

White to play and mate in two moves.



South Eastern Railway

AND

Montreal and Boston Air Line

THE DIRECT AND BEST ROUTE

TO

White Mountains, Concord, Manchester, Nashua, Lowell, Worcester, Providence.

BOSTON

and all points in NEW ENGLAND, also to the EASTERN TOWNSHIPS.

On and after MONDAY, JUNE 27th, South Eastern Railway Trains will run to and from Bonaventure Station as follows:—

LEAVE MONTREAL.

DAY EXPRESS running through to Boston at 2.50 a.m., with Parlor Car.

LOCAL TRAINS to Knowlton and All Way Station this side at 5.00 p.m., on Saturdays at 2.30 p.m., instead of 5.00 p.m., and arrive on Monday at 8.25 a.m., instead of 9.15 a.m.

NIGHT EXPRESS, with Pullman Sleeper, through to Boston at 6.30 p.m., will stop only at Chambly, Canton, West Farnham, and Cowansville, between St. Lambert and Sutton Junction, except on Saturdays, when this train will stop at all stations.

ARRIVE AT MONTREAL.

NIGHT EXPRESS from Boston at 8.25 a.m. LOCAL TRAINS from Knowlton and All Way Stations at 9.15 a.m., on Mondays at 8.25 a.m., instead of 9.15 a.m.

DAY EXPRESS from Boston at 8.45 p.m.

Express Train arriving at 8.25 a.m. will stop daily at Richelieu, Chambly, Canton and Chambly Basin. The most comfortable and elaborate Sleeping Cars run on the night trains that enter Bonaventure Station.

ALL CARS AND TRAINS run between Bonaventure Station, Montreal, and Boston WITHOUT CHANGE. Baggage checked through to all principal points in NEW ENGLAND.

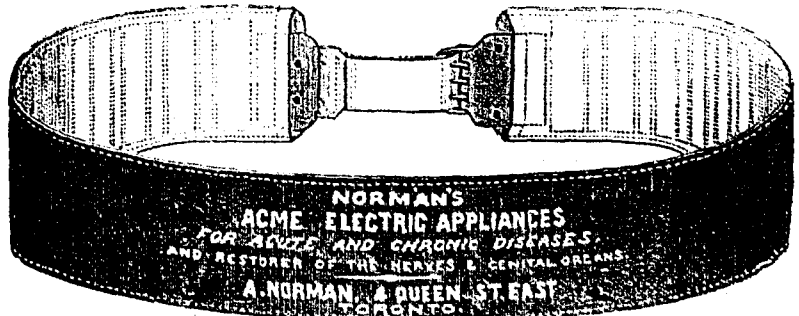
BAGGAGE PASSED BY THE CUSTOMS AT BONAVENTURE STATION, thus saving all trouble to Passengers at the Boundary Line.

For Tickets, apply at 29, St. James street, Windsor Hotel and Bonaventure Station.

BRADLEY BARLOW, President and General Manager.

NORMAN'S ELECTRO-CURATIVE BELT INSTITUTION.

(ESTABLISHED 1874.)



A. NORMAN, Electrician. 4 QUEEN STREET EAST, TORONTO, ONT.

CONSULTATION FREE. Large Circulars, with Testimonials, may be had on application.

THE BURLAND LITHOGRAPHIC COMPANY

(LIMITED)

CAPITAL \$200,000,

GENERAL

Engravers, Lithographers, Printers

AND PUBLISHERS,

3, 5, 7, 9 & 11 BLEURY STREET, MONTREAL.

THIS ESTABLISHMENT has a capital equal to all the other Lithographic firms in the country, and is the largest and most complete Establishment of the kind in the Dominion of Canada, possessing all the latest improvements in machinery and appliances, comprising:—

- 12 POWER PRESSES 1 PATENT LABEL GLOSSING MACHINE 1 STEAM POWER ELECTRIC MACHINE, 4 PHOTOGRAPHING MACHINES, 2 PHOTO-ENGRAVING MACHINES, Also CUTTING, PERFORATING, NUMBERING, EMBOSSING, COPPER PLATE PRINTING and all other Machinery required in a first class business.

All kinds of ENGRAVING, LITHOGRAPHING, ELECTROTYPING AND TYPE PRINTING executed IN THE BEST STYLE

AND AT MODERATE PRICES

PHOTO-ENGRAVING and LITHOGRAPHING from pen and ink drawings A SPECIALTY.

The Company are also Proprietors and Publishers of the

CANADIAN ILLUSTRATED NEWS, L'OPINION PUBLIQUE, and SCIENTIFIC CANADIAN.

A large staff of Artists, Engravers, and Skilled Workmen in every Department.

Orders by mail attended to with Punctuality, and prices the same as if given personally.

G. B. BURLAND, Manager

The Scientific Canadian

MECHANICS' MAGAZINE

AND

PATENT OFFICE RECORD

A MONTHLY JOURNAL

Devoted to the advancement and diffusion of Practical Science, and the Education of Mechanics.

THE ONLY SCIENTIFIC AND MECHANICAL PAPER PUBLISHED IN THE DOMINION.

PUBLISHED BY

THE BURLAND LITHOGRAPHIC CO.

OFFICES OF PUBLICATION,

5 and 7 Bleury Street, Montreal.

G. B. BURLAND General Manager.

TERMS:

One copy, one year, including postage, \$2.00 One copy, six months, including postage, \$1.10

Subscriptions to be paid in ADVANCE.

The following are our advertising rates:—For one monthly insertion, 10 cts. per line; for three months, 25 cts. per line; for six months, 50 cts. per line; for one year, 75 cts. per line; one page of Illustration, including one column description, \$20; half-page of Illustration, including half-column description, \$10; quarter-page of Illustration, including quarter-column description, \$5.

10 per cent. off on cash payments. INVENTIONS AND MACHINERY, or other matter of an original, useful, and instructive character, and suitable for subject matter in the columns of the MAGAZINE, and not as an advertisement, will be illustrated at very reduced rates.

THIS PAPER MAY BE FOUND ON FILE AT GEO. J. ROWELL & CO'S Newspaper Advertising Bureau (10 SPRUCE STREET), WHERE ADVERTISING CONTRACTS may be made for it in NEW YORK.