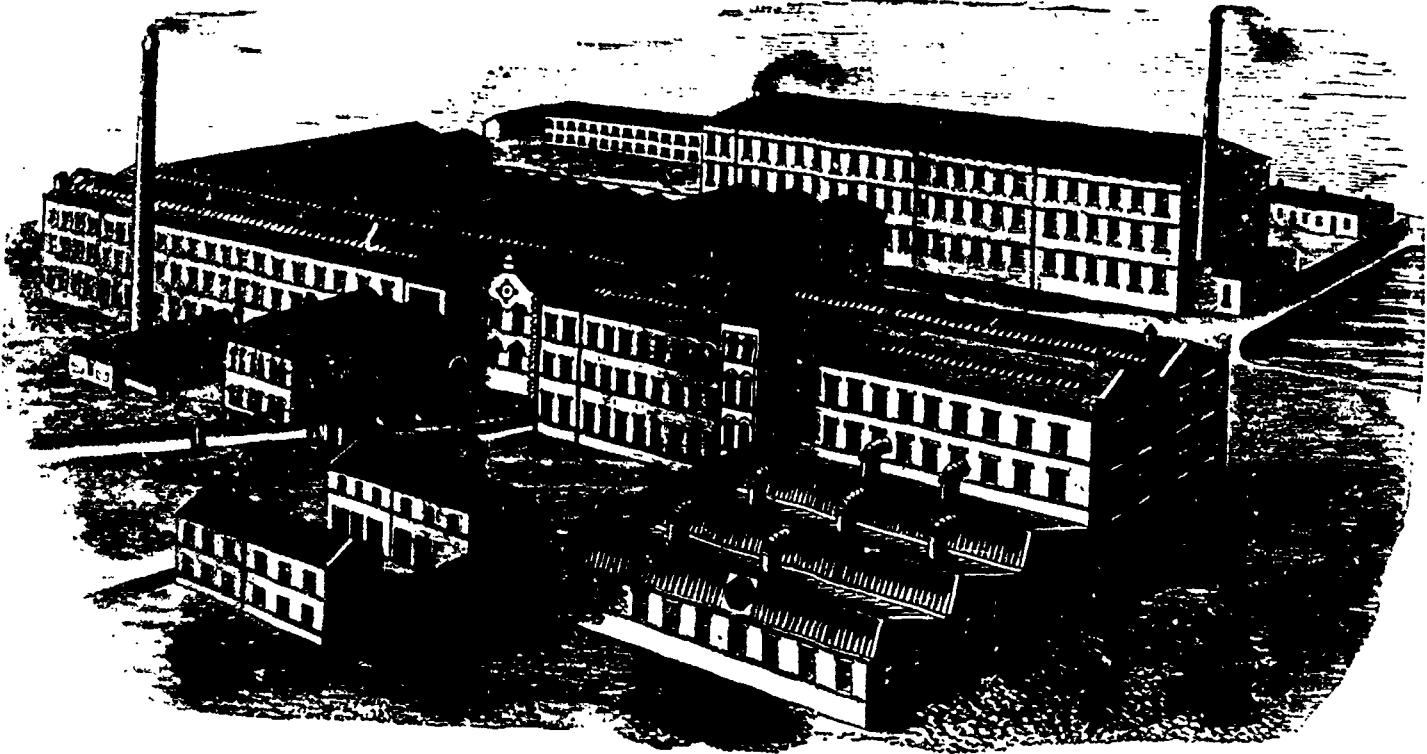


CARD CLOTHING OF EVERY DESCRIPTION



SAMUEL LAW & SONS, LIMITED

Established 1816

MOORLAND AND ROUND HILL MILLS

Incorporated 1888

CLECKHEATON, - ENGLAND

Largest Manufacturers in the World of

CARD CLOTHING

—FOR CARDING—

Cotton, Wool, Worsted, Silk

and other Fibrous Materials.

MAKERS OF

Plough-Ground, Side-Ground, Needle
and Diamond-Pointed

CARD CLOTHING

With HARDENED and TEMPERED Cast Steel Wire

PATENTEES AND MANUFACTURERS OF

Patent Rolled and Compressed Double Convex Wire, Angular, Flat,
Round and Flat, and Ordinary Round Wire Cards.

Samples, Prices and Testimonials on application

AGENTS FOR CANADA:

ROBERT & COMPANY, - - 356 St. James Street, MONTREAL