

## The Epworth League Secretary's Report.

**D**URING the first few years of its history, the Epworth League grew with amazing rapidity, many young people coming into its ranks without any clear idea of the obligations involved. As might have been expected, there has come some reaction, with consequent decrease of membership.

The novelty and glamor of the early days has worn off; the abnormal has passed away, and a normal condition of affairs has come. While there has been some lessening of the numbers, the working force of the Epworth League was never so great as it is to-day. As Gideon's army was reduced in size and correspondingly increased in efficiency, so it would seem that the testing period of the past four years has made our Young Peoples' Societies more serious, more energetic and more successful in doing the real work for which they were brought into existence.

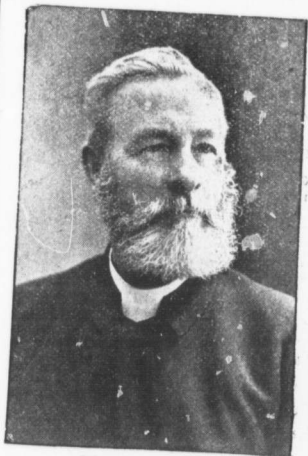
### THE TESTIMONY OF PASTORS

coming from all parts of the work is almost unanimously to the effect that the Epworth League has been a great help to them in their work, and not a little to the spiritual life of the church. It has frequently been stated that the organization of our Young People's Societies has resulted in a line of cleavage between the young and old. The facts do not seem to warrant this conclusion. Most of the pastors who have reported state that as large a proportion of young people, and in many cases much larger, attend the weekly church prayer meetings and class meetings, as the senior members.

It has been objected that the activities of the League are largely within its own circle, and do not benefit the church. This is not altogether true, but even if it were, it would not be a very serious thing, for inasmuch as the League is a part of the Church, when it helps its own members it helps the church. Naturally, much of the work is done by young people for young people.

### THE CHRISTIAN ENDEAVOUR DEPARTMENT

is regarded as the essential feature of League organization, and is kept well to the front. In almost every society much more attention is paid to the distinctively



REV. DR. POTTS.

spiritual services than to any other feature. The literary and social elements have not overshadowed or displaced the work of this important department. Our young people have conducted cottage prayer-meetings and out-door evangelistic services. They have proved themselves most efficient helpers in revival efforts, and by their means much personal work has been done. The Forward Movement in Bible Study and Evangelistic Work has been continued with most satisfactory results. This year the Epistles of James and 1st and 2nd Peter have been chosen for Bible study, and the second Sunday in October set apart as Young People's Day, to be followed by a week of special services. The thirteenth anniversary of the Epworth League will be celebrated at the same time, for which a programme has been prepared by the General Secretary.

### THE MISSIONARY DEPARTMENT.

One of the most striking developments in the Epworth League during the past four years has been the interest and enthusiasm aroused on behalf of missions, largely due to the introduction of the Young People's Forward Movement for Missions. The leading features of this