

C H E S S .

(To Correspondents.)

F. B. M.—Mr. Staunton is probably the best chess-player in the world. Next to him we should place the celebrated Russian player, Petroff, and the profound German, Von Heydebrandt der Lasa.

CLOVERFIELD.—The solutions are correct, but we wish you had tried No. 23, as amended. Pray tell your fair friend "Betty," that we hope her success in solving our last Problem will induce her to try that in the present number.

ENQUIRER.—We publish none but original positions on diagrams, though we make an occasional exception in favor of clever problems of Canadian authorship. We shall be glad to see your original Problem.

AMY.—We have made use of your Enigma in the present number. The key move to Mr. Bolton's very pretty enigma in our last is 1. P becomes a Knight. The other, from the *Shackleton*, you have solved correctly. We should feel happy if some of our other correspondents would follow your example, and favour us now and again with an original position.

Solutions to Problem 7, by J. B., Betty Martin, M. D., and J. H. R., are correct.

Solutions to Enigmas in our last by Cloverfield, Amy, Enquirer, are correct.

SOLUTION TO PROBLEM NO. VII.

WHITE.

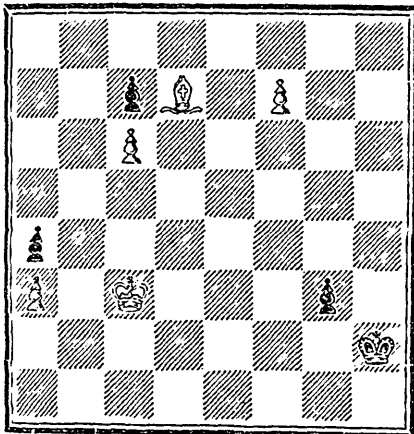
BLACK.

1. R to KR 3d (disc ch). K to Q 4th (best).
2. B to K B 5th. K to Q 3d.
3. R to KR 7th. K or P moves.
4. R mates.

PROBLEM NO. VIII.

Being an End Game from an Amateur in Guelph.

BLACK.



WHITE.

In this position, White having to play, Queened the Pawn; Black then played P to K Kt 7th, whereupon White announced mate in four moves.

ENIGMAS.

No. 28. By Amy.

WHITE.—K at Q 6th; R at K 2d; Kt at K R 2d; Ps at K B 3d, Q B 2d, and Q Kt 3d.

BLACK.—K at Q 5th, Ps at K 6th and Q B 6th.

White to play and mate in three moves.

No. 29. From the PICTORIAL TIMES. By M. R. F.

WHITE.—K at his R 5th; R at K 5th; B at Q B 5th, and Kt at K B 5th.

BLACK.—K at Q R 4th and P at Q 4th.

White to play and mate in three moves.

IMPROMPTU

BY A GENTLEMAN, ON PRESENTING HIS NIECES WITH A SET OF CHESSMEN.

(From the Chess-Player's Chronicle.)

The box now presented to you, my dear nieces,
Start not! contains men, though in thirty-two pieces;
But may each of you meet with one perfect and whole

For a partner through life, with a heart and a soul;
May you each in life's game o'er successfully move,
And all conquests achieved, prove the conquests of love;

May you ever be able on banks to give check,
And may Bishops and Knights oft bow at your beck;
May Castles surrender whene'er you attack 'em,
And staunch prove your men, with your good Queen to back 'em;

May your fortunes permit you to dwell in the squares,
And enjoy life's delights without tasting its cares.
May you each find a mate, this life's journey to sweeten;
And though more than once mated, may you never be beaten!

CHESS IN TORONTO.

We extract from a recent number of the *Chess Player's Chronicle* the following spirited little game, played in Toronto last year between two amateurs, formerly distinguished members of the Cambridge Chess Clubs, and which the Editor of the *Chronicle* tells his English readers came off "in the backwoods of America." Should Mr. Staunton ever do us the honour of paying a visit to Toronto, we trust he will not feel any disappointment at finding a flourishing and rapidly increasing city instead of these "backwoods,"—the sudden disappearance of which, if it cause him any surprise, he must refer to "mysterious agency."

(Evans' Gambit.)

White.

Black.

(MR. CALTHROP.)

(PROF. CHERIMAN.)

1. P to K 4th.

P to K 4th.

2. K Kt to B 3d.

Q Kt to B 3d.