

GENERAL INFORMATION.

101---

Class
 11 to 12 noon, and
 2 to 3 p.m. on Tues-
 day afternoons of each week.
Work CLASS on Monday and
 Wednesday of each week from
 7 to 9 p.m. for senior
 and 7 to 8 p.m. for junior pupils.

Attention Classes:
 1 to 2 p.m. and from 4 to 5 p.m.
Religious Exercises:

Primary pupils at 9 a.m.
 and 11 a.m. General Lecture
 and hymns after which the Bible
 is read.
 Day the pupils are to read the
 lesson and to recite it. Teacher
 will assist them in prayer.
 It is desired that they
 attend religious exercises not
 only on school days but on
 all days. In the afternoon
 of each day will be a child
 and be dismissed in a quiet and
 orderly manner.
Visiting Clergymen: Rev. Carl
 H. Johnson, Methodist, A. C.,
 Rev. M. W. Maclean, Pres-
 byterian, Rev. A. H. Baker,
 Baptist, Rev. M. W. Maclean, Pres-
 byterian, Rev. Father Casper.
 Mass Sunday afternoon at 4.15. Inter-
 mediate School Sunday Lessons,
 R. MATHISON, Teacher.

Clergymen of all Denominations are cordially invited to visit us at any time.

Industrial Departments:—

- Printing Office, Book and Carpenter**
 from 7.30 to 8.30 a.m. and from 3.30 to 4.30 p.m. for pupils who attend school, for
 those who do not attend school, and from
 7.30 a.m. to 11.30 a.m. on each working day
 and Saturdays when the office and shops
 are closed at noon.
- Sewing Class** Hot are from 9 a.m. to
 12 noon, and from 1.30 to 3 p.m. for
 those who do not attend school, and from
 7.30 to 9 p.m. for those who do. No sewing
 on Saturday afternoons.
- Printing Office, Shops and Sewing**
 are closed each day when work ceases
 on account of bad weather and icy condition.
- Pupils** are not to be excused from the
 classes or Industrial Departments,
 on account of sickness without per-
 mission of the Superintendent.
- Teachers, Officers and others** are not to
 be excused from the work in hand to
 attend to other matters with the performance of their
 duties.

Visitors
 Pupils are interested desirous of visit-
 ing the Institution will be made welcome on
 any day. No visitors are allowed on
 Sundays, Holidays or Holidays except to
 attend chapel exercises at 2.30 on Sun-
 day afternoons. The best time for visitors
 on any school days is as soon after 1.30
 as possible, and the classes
 dismissed at 10 o'clock.

Admission of Children:—

When pupils are admitted and parents come
 to the Institution, they are kindly
 requested not to linger and prolong leave-
 taking with their children. It only makes
 the child sad for all concerned, particularly for
 the child. The child will be tenderly cared
 for if left in our charge without delay
 and will be quite happy with the others in a few
 days in some cases in a few hours.

Visitation:—

It is beneficial to the pupils for friends to
 visit them frequently. If parents must
 however, they will be made welcome
 in the classrooms and allowed every oppor-
 tunity of seeing the general work of the
 Institution. We cannot furnish lodging or meals,
 but can obtain guests at the Institution. Good
 accommodation may be had in the city at the
 Hotel, Hoffman House, Queen's, Anglo-
 Saxon and Dominion Hotels at moderate
 rates.

Clothing and Management:—

Parents will be good enough to give all direc-
 tions concerning clothing and management
 of their children to the Superintendent. No
 correspondence will be allowed between
 parents and employees under any circum-
 stances without special permission upon
 application.

Sickness and Correspondence:

In the serious illness of pupils letters
 and news will be sent daily to parents or
 friends. IN THE ABSENCE OF LETTERS
 FROM PUPILS MAY BE QUITE SURE THEY
 ARE WELL.
 Pupils who are capable of doing so, will
 be required to write home every three weeks.
 Letters will be written by the teachers for the
 pupils who cannot write, stating as nearly
 as possible their wishes.
 Medical preparations that have been
 prescribed or prescribed by family phys-
 icians will be allowed to be taken by pupils
 with the consent and direction of the
 Superintendent of the Institution.
 Friends of deaf children are worried
 by the fact that doctors who advise a fresh
 set of appliances for the ears of deaf
 children, release out of their ears, and
 they want money for which they give
 nothing. Consult well known medical
 men in the cases of adventurous deaf-
 mutes. They will be guided by their counsel and

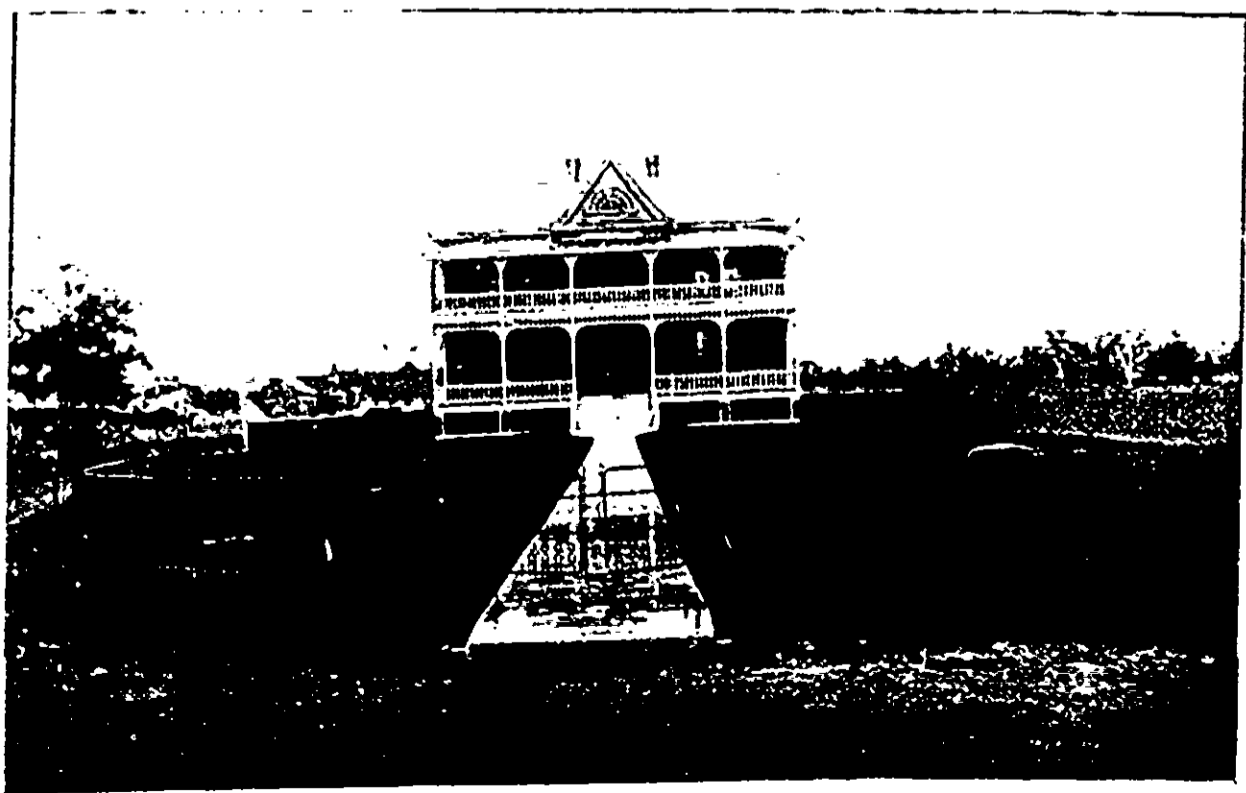
R. MATHISON,
 Superintendent.



THE PRINTING OFFICE.



THE SHOE SHOP.



THE GIBSON HOSPITAL,