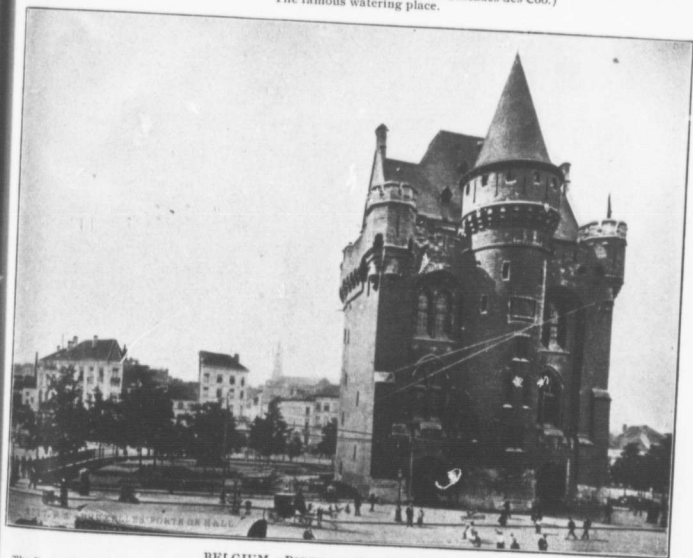




BELGIUM.—THE COO CASCADES AT SPA. (Les Cascades des Coo.)  
The famous watering place.



BELGIUM.—PORTE DE HAL, BRUXELLES.

The Porte de Hal dates from the 13th century. It was at that time a fort and one of the chief gates of the old fortifications, serving also as a prison. It was afterwards converted into a museum and contains a large collection of arms and armour.