

**NOVA SCOTIA STEAMSHIPS, Limited.**



The S. S. "W. M. TUPPER" left Boston June 23rd for Halifax and St. John's.  
The S. S. "LADY OF GASPE" is expected to sail from Boston, June 28th, for Halifax and St. John's.  
Ships will discharge at A. H. Murray's premises.  
**A. E. HICKMAN CO., LTD., Agents.**  
June 24, 21

**Buy Progress Brand Working Shirts, Pants & Overalls!**

Roomy sizes, durable materials, strongly made in our own factory to withstand hard usage. The materials were bought a long time ago and are priced well below present quotations. This means a considerable saving to you. Keep the home wheels turning by buying local made goods.

**NFLD. CLOTHING CO., Limited.**  
WHOLESALE ONLY.

We respectfully solicit a share of the marginal trading of every investor in the city. Representing E. M. Fuller & Co., a reputable firm actively trading in every stock and bond listed in New York, we are always in a position to execute your business promptly and satisfactorily.

Daily quotations on the active issues, synoptic reports, and a weekly market review are some of the advantages our clients get. Whether your order is only \$10 or \$1,000 we respectfully ask for a share of your business.  
**J. J. LACEY & COMPANY LIMITED,**  
CITY CHAMBERS.

**Immediate Delivery!**

Protect your spring trade by placing your order at once for the following popular goods:  
**MEN'S SERGE SUITS—Asstd. prices.**  
**MEN'S TWEED SUITS—Asstd. prices.**  
**MEN'S WORSTED SUITS—Asstd. prices.**  
**MEN'S TROUSERS—Asstd. prices.**  
**MEN'S TRENCH COATS.**  
Customers report making quick sales with "Victory Brand" Clothing on account of the good fit and finish of the garments.  
WHOLESALE ONLY.

**The White Clothing Manufacturing Co., Ltd.**  
259-261 Duckworth Street.



**No Matter How the Fire is Caused**

if you're not insured, you're a loser. Take time to see about your policies. We give you the best companies and reasonable rates.

**PERCIE JOHNSON,**  
Insurance Agent.

**WHEEL TOYS!**

Made of sheet steel and securely put together, finished in bright high grade enamels. Wheels are pressed steel and have solid steel bearings.

**WORTH-WHILE TOYS.**  
**EXPRESS WAGGONS, DUMP CARTS, WHEELBARROWS.**  
**SMITH'S Dry Goods Store**  
RAWLINS' CROSS.

**Big Sale of White Boots and Shoes at Smallwoods.**

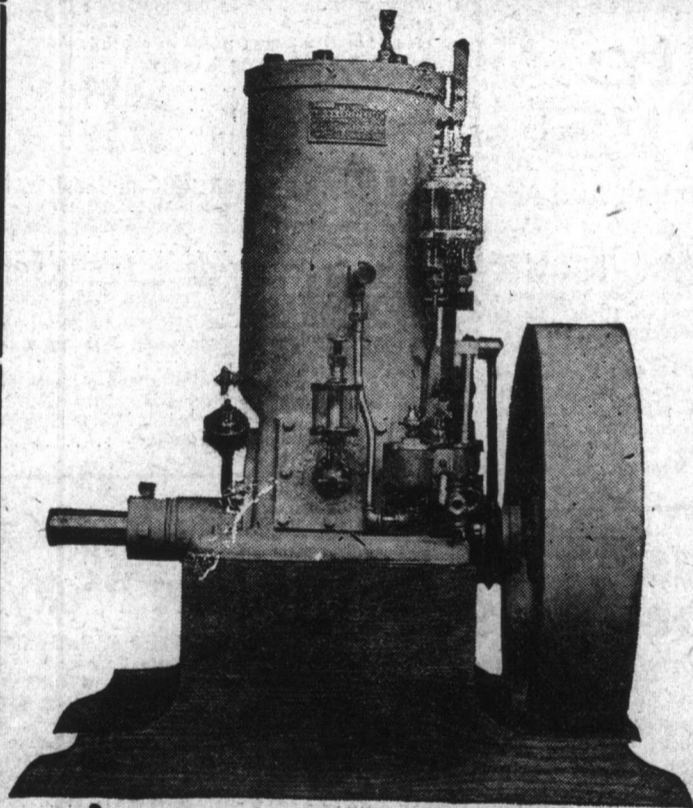


To reduce the high cost of footwear we offer our customers some ten thousand pairs of White Canvas Boots and Shoes at greatly reduced prices.

Ladies' White Canvas High Cut Laced Boots, \$2.99.  
Ladies' White Canvas 2-Strap Shoes... \$2.59  
Ladies' White Canvas Laced Shoes... \$2.49  
**SECURE A PAIR TO-DAY.**

See display windows for lowest prices on Boots and Shoes for men, women and children. Mail Orders receive prompt attention.

**F. Smallwood,**  
The Home of Good Shoes.



**LATHROP ENGINES**  
Built for the Fisherman.  
**A. H. Murray & Co., Ltd.,**  
April 18, 2001 St. John's.

**SPECIALS!**

Potatoes, as dry as flour... 53c. gall.  
No. 1 Salt Codfish... 11c. lb.  
Choice Hand Picked Beans... 10c. lb.  
Green Cabbage... 15c. lb.  
Early June Peas... 13c. tin

**DUFFY'S GROCERY.**

**Furness Line Sailings**

	From Liverpool	St. John's to Sydney	Halifax to St. John's	St. John's to Liverpool
S. S. DIGBY	June 17th	June 26th	June 15th	June 18th
S. S. SACHEM	June 17th	June 26th	June 15th	June 18th

These steamers are excellently fitted for cabin passengers. Passengers for Liverpool must be in possession of passports. For rates of freight, passage and other particulars apply to  
**Furness, Withy & Co., Limited**  
WATER STREET EAST.

**J. J. St. John.**

At Our Meat Counter.  
**NEW SPARE RIBS.**  
**FAMILY STYLE PORK.**  
**HAM BUTT PORK.**  
**FAT BACK PORK.**  
**PORK LOINS.**  
**VERY CHOICE BEEF** at 18c. lb.  
**SUPERIOR HAMS** and **BACON.**  
**ASHLAND HAM.**  
**SMOKED SALMON** every morning.

**J. J. St. John,**  
136 - 138 Duckworth Street

**Dictionaries.**

**YOU MUST HAVE A DICTIONARY. WHY NOT THE BEST!**  
Cassell's New English Dictionary, 1312 pages, 120,000 words. The only popular cheap Dictionary with a really simple efficient and scientific system of pronunciation that is applied to every main word, and that gives the explanation of 3500 foreign and English abbreviations, \$2.50.  
Cassell's English-French Dictionary, 1200 pages, 100,000 words. A new pronouncing Dictionary of the French and English languages compiled from the best authorities in both, \$2.50.  
Cassell's Latin-English Dictionary, A new Dictionary of the Latin and English languages, with an abundant selection of Latin phrases and their translations, \$2.50.  
Cheap Editions in English Dictionaries at \$2.10, \$1.70, \$1.10, 75c., 40c. each.  
Pocket English Dictionaries, English-French and English-Latin, at 75c., 95c., \$1.35 each.

**GARRETT BYRNE,**  
Bookseller & Stationer.

**High Grade Smokers Goods!**

**JOHN COTTON'S**  
World-renowned Smoking Mixture  
**TOBACCO.**  
Bock & Co.'s High Grade  
**HAVANA CIGARS.**  
Made from the finest tobaccos grown on the Island of Cuba.  
The Famous  
**PALL MALL**  
Cork Tipped  
**CIGARETTES.**

Each Cigarette will smoke to the end with delicious taste and aroma.  
A shipment of the above goods just arrived and can be had at our Store.  
**JAMES P. CASH,**  
Tobacconist, Water St.

**NOTICE.**

Four weeks after the date hereof application will be made to his Excellency the Governor in Council for Letters Patent for "New and useful improvements in suction boxes for Four-drawer type of paper making machines" to be granted to J. E. McLaughlin and J. O. Hamel, both of Grand Mere in the Province of Quebec in the Dominion of Canada, Mechanics.  
Dated at St. John's, this 1st day of June, A.D. 1920.  
F. L. CARTER,  
Solicitor for Applicants.

**Reid-Newfoundland Company.**

**NOTICE TO PASSENGERS FOR POINTS BETWEEN ST. JOHN'S, CLARENVILLE & BONAVISTA.**  
Passenger train, with dining car attached, will leave St. John's at 7.45 a.m. Mondays, Wednesdays and Fridays, taking all passengers and baggage for points between St. John's, Clarenville and Bonavista. It is desirable that passengers join this train, as it is impossible to give them accommodation on the regular express train.

**FREIGHT NOTICE.**

**GREEN BAY STEAMSHIP SERVICE.**  
Freight for the above route, per S. S. HOME, via Lewisporte, will be accepted at the Freight Shed on Friday, June 25th, from 9 a.m., until sufficient received.

**Reid-Newfoundland Company.**

**Reid-Newfoundland Company, Street Railway.**

Commencing Thursday, July 1st, street cars will stop to take up and set down passengers ONLY at points marked "Car Stop" on signs attached to the poles, which points are as follows:—

- BELT LINE—**  
Tobin's Knight Street  
Custom House Rawlins' Cross  
Cochrane Street Bee Orchis Terrace  
Wood Street St. Patrick's Hall Switch  
Cavendish Square Long's Hill  
Cochrane Street Switch Dicks' Square  
Bannerman Street Bates' Street  
Adelaide Street at New Gower Street  
Adelaide Street at Water Street
- WATER STREET LINE—**  
Leslie Street Waidegrave Street  
Bennett's Brewery Queen Street  
Alexander Street Adelaide Street  
Patrick Street Beck's Cove  
Railway Depot McBride's Hill  
Hutchings' Street Smallwood's  
Bambrick Street Court House  
Springdale Street Board of Trade Building  
Prince's Street Prescott Street  
Holloway Street

This adoption of the rule prevailing in most cities is designed to ensure the safety of passengers entering and leaving the cars, and also to improve the service, and patrons of the cars are asked to assist in seeing that the rule is strictly carried out.

**Reid-Newfoundland Company.**  
June 25, 21

**Gifts for the Man WHO SMOKES.**

**High-Class Goods!**

- Genuine French Briar Pipes in specially selected dark woods and nicely cased.
- Silver Cigarette Cases.
- Tobacco Pouches—Plain and silver mounted.
- Cigarette Tubes.
- Cigarette Holders in Pearl, Ivory and Bone. All sizes and many of them gold mounted. A very choice line.
- Silver Cigarette Boxes.
- Cigar Cases.
- Match Boxes.

**T. J. DULEY & Co., Ltd.,**  
The Reliable Jewellers and Opticians.

**FRUIT, CABBAGE, etc.**

150 crates NEW CABBAGE—Green.  
150 packages ONIONS.  
150 cases CALIFORNIA ORANGES—252, 216, 176 count.  
150 boxes APPLES—125, 138, 140 count.  
We have also 15 barrels of CHOICE SEED POTATOES. PRICES RIGHT.

**BURT & LAWRENCE.**