

We believe, through careful inquiry, that every advertisement in The Guide is signed by trustworthy persons. We will take it as a favor if any of our readers will advise us promptly should they have reason to question the reliability of any person or firm who advertises in The Guide. We do not knowingly accept the advertisements of frauds, get-rich-quick-schemes, doubtful investments, or anything classed by us as "undesirable."

We publish no free "boosters," and all advertising matter is plainly marked as such.

Rates for classified advertisements may be seen on the classified page. Display rates may be had on application.

Change of advertising copy and new matter must reach us seven days in advance of publication to ensure insertion.

PORT NELSON THE TERMINUS

Ottawa, Sept. 12.—Although Hon. Frank Cochrane, Minister of Railways, has made no definite announcement, it is generally understood that the government has chosen Port Nelson as the terminus of the Hudson Bay railway. The new line starts from the crossing of the Saskatchewan river at the Pas Mission. The great bridge across the river is under construction. A branch of the Canadian Northern railway now runs from Prince Albert northerly for 100 miles to the Mission, almost on the 54th parallel. It is intended that the Hudson Bay road shall run from the Pas northeasterly to the bay. To Port Nelson the distance is 418 miles, and the engineers favored it as the terminus. They reported that the distance was shorter than to Fort Churchill by 80 miles; that the natural difficulties of the route were less serious; that construction would be less costly; that a better country would be traversed and a better harbor secured.

The Port Nelson route gives gradients of 21 ft. in the mile both northward and southward. The cost is estimated at \$17,000,000 to Nelson. There must be added from \$5,000,000 to \$7,000,000 for harbor works, for the exploration, lighting, and buoying of Hudson Bay and for other necessary assistance to navigation. Probably the final cost of the whole enterprise will not fall below \$30,000,000.

The distance from the wheat fields to Hudson Bay is practically the same as to Fort William, at the head of Lake Superior, as the ocean voyage from the bay practically equals that from the St. Lawrence. Under favorable conditions, therefore, the economic saving should be equivalent to the cost of transportation from Fort William to Montreal. It will be necessary to establish elevators at the Hudson Bay terminus, and to secure a fleet of steamships.

CO-OPERATIVE SALES BRANCH

The Saskatchewan Co-operative Elevator company have opened an office in Winnipeg for the handling of their grain. F. N. McLaren is in charge as superintendent of the commission and sales department.

**CHEW
MAPLE
SUGAR
TOBACCO**

MILD, SWEET, MELLOW AND JUICY

Manufactured by

ROCK CITY TOBACCO CO.

Quebec

Winnipeg

The Grain Growers' Guide

G. F. CHIPMAN, Editor.

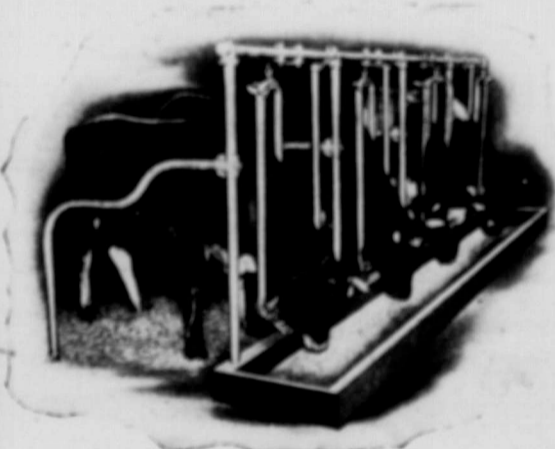
Published under the auspices and employed as the Official Organ of the Manitoba Grain Growers' Association, the Saskatchewan Grain Growers' Association, and the United Farmers of Alberta.

The Guide is designed to give uncolored news from the world of thought and action and honest opinions thereon, with the object of aiding our people to form correct views upon economic, social and moral questions, so that the growth of society may continually be in the direction of more equitable, kinder and wiser relations between its members, resulting in the widest possible increase and diffusion of material prosperity, intellectual development, right living, health and happiness.

Published every Wednesday at Winnipeg, Canada. Authorized by the Postmaster-General, Ottawa, Canada, for transmission as second class mail matter.

Volume V. September 18th, 1912 Number 12

BT SANITARY STEEL STALLS



Make the Dairy Business Pay

They give your Cows a chance to make Big Profits for you

Look at the photo here and you will see the reason. The cows have almost as much freedom as when out in pasture. There is no weight on their necks. They are free to turn their heads in any manner they wish. They can card themselves on almost any part of their bodies. Cows that are comfortable are bound to do well.

BT STEEL STALLS KEEP YOUR COWS CLEAN AND SO ENABLE YOU TO INCREASE YOUR DAIRY PROFITS

By the use of the Aligning Device on BT Stalls the long and short cows are lined up even with the gutter, and so all droppings fall into the gutter and not on the cattle stand. As a result the cows are always clean. Their udders and flanks are never soiled with manure. You are saved all the work of cleaning off the cattle stand and scrubbing the cows before milking. Just half the hired labor is required to care for the cows. But that is not all.

THE SANITARY CONDITION EFFECTED IN YOUR STABLE BY BT STEEL STALLS INCREASES THE VALUE OF YOUR DAIRY PRODUCTS

BT Sanitary Stall Equipment, by keeping your cows clean, increases the purity of the milk and people will gladly pay you a higher price for your milk and butter.

Mr. R. A. Spring, of Woodstock, writes: "At inspection day at our barn, where we recently entertained 200 visitors, one customer, after seeing our magnificent stable, remarked that he would not have anything but our 8 cents milk, even when everyone else was selling for 7 cents."

"I do not regret the expense of your equipment, for the work of caring for the cows is so much easier that it requires no more time now to care for 40 head than formerly to care for 20."

GET OUR CATALOGUE AND PRICES

If you are interested in reducing the labor and expense of keeping your dairy cows, and want to increase your dairy profits, write us today for our stall Catalogue. It shows you how BT Steel Stalls save you money every day in the year, how they prevent Abortion, Big Knees, Ruined Udders, Tuberculosis, and many other ailments that cows are liable to. It contains information about the stabling of cattle that is invaluable to the farmer or dairyman.

Write us and we will send you our Catalogue today.

BEATTY BROS. - 202 Pacific Avenue - BRANDON, MAN.

We also make Litter Carriers, Water Bowls, Horse Stable Fittings, Etc. Mention if you want Catalogues.

You will be much interested in our new booklet

PURE WATER
and
HOW TO GET IT

Send us a post card for it

The Western Steel and Iron Co., Ltd.

Engineers and Ironfounders

Winnipeg

Canada

OUR EXPERIENCE

And the PERSONAL ATTENTION we devote to your business, gets the results you want—TRY US!

Members
Winnipeg Grain
Exchange

THE SMITH GRAIN COMPANY

M. K. SMITH
Manager

Grain Commission Merchants

Winnipeg, Man.

The Guide is the only paper in Canada that is absolutely owned and controlled by the organized farmers. It is entirely independent, and not one dollar of political, capitalistic or Special Interest money is invested in it. All opinions expressed in The Guide are with the aim to make Canada a better country and to bring forward the day when "Equal Rights to All and Special Privileges to None" shall prevail.

Subscriptions to any part of the British Empire, \$1.00 per year in advance. Foreign subscriptions, \$1.50 in advance. Single copies 5 cents.

Send money by express, post office or bank money order. We cannot accept responsibility for money sent loosely in a letter.

LARGER ELEVATORS NEEDED

Montreal, Sept. 11.—Hon. J. D. Hazen, minister of marine and fisheries, today received a delegation composed of the Montreal harbor commissioners, Messrs. C. C. Ballantyne and L. E. Geoffrion, F. W. Cowie, chief engineer, and Mr. David Seath, Secretary of the harbor board, when ways and means were discussed for increasing the storage capacity of the harbor commissioners' grain elevator, No. 1, by another 1,500,000 bushels.

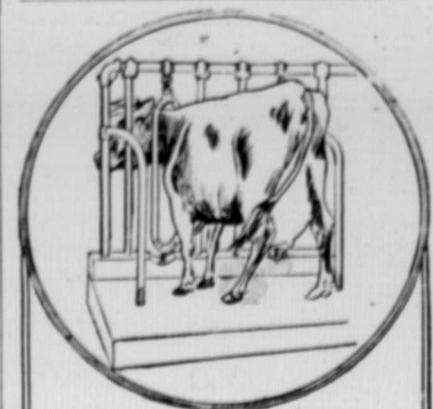
The commissioners explained to the minister the urgent need of further storage facilities in the harbor, and that they wished to commence this addition to No. 1 elevator at once. The minister heartily approved of this, and the work will commence immediately on this further addition, which the commissioners expect will be all ready for full business in 1913.

The present storage capacity of the harbor commissioners' elevators is: No. 1, 1,000,000; No. 2, 2,640,000. When the addition to No. 1 is completed it will give a total storage capacity in the harbor commissioners' elevators of 5,140,000 bushels.

GLADSTONE'S SEAT ELECTS TORY

London, Sept. 11.—In a three-cornered fight for Midlothian, Gladstone's old seat, the Unionist candidate, Major Hope, won by 32 majority over Hon. A. Shaw, Liberal. This is the first time for 32 years that the riding has gone Conservative. The vote stood, Major Hope, Conservative, 6,021; Hon. A. Shaw, Liberal, 5,989; Provost Brown, Labor, 2,413.

In consequence of this defeat the Liberals are demanding that Premier Asquith insert in the next electoral reform bill a clause which either by provision for an alternative vote, or for a second ballot will prevent a constituency from becoming represented by a minority vote.



A Contented Cow is A Profitable Cow

ARE your cows contented? Are they profitable? If not, make them so by doing away with your old-time wooden stalls. They gather dirt, harbor disease germs, and prevent the free circulation of life-giving air and sunlight.

LOUDEN'S

Tubular Steel Stable Equipment is easily and quickly installed, and insures cleanliness and ventilation. Its use means comfort for your cows and profits for you.

GET INTERESTED. WRITE TO-DAY.

Our book, "Perfect Barn Equipment," and the service of our architectural department, are free.

The Louden Hardware Specialty Co.
511 Maria Ave. - WINNIPEG